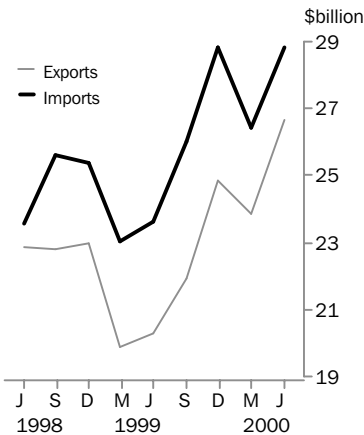


INTERNATIONAL MERCHANDISE TRADE

AUSTRALIA

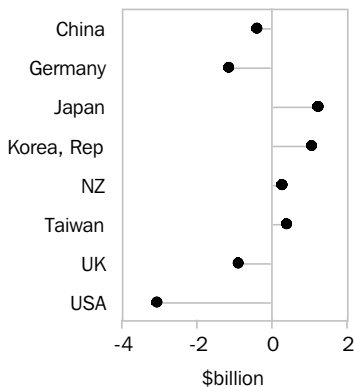
EMBARGO: 11:30AM (CANBERRA TIME) FRI 18 AUG 2000

Exports and imports



Balance by country

June quarter 2000



- For further information about these and related statistics, contact Sharyn Sturgeon on Canberra 02 6252 5310, or the National Information Service on 1300 135 070.

JUNE QTR KEY FIGURES

	\$m	% change Mar Qtr 2000 to Jun Qtr 2000	% change Jun Qtr 1999 to Jun Qtr 2000
Merchandise exports	26 656	11.7	31.4
Merchandise imports	28 803	9.0	21.9

JUNE QTR KEY POINTS

BY COUNTRY

- Japan, surplus down 6% to \$1,279 million
- Republic of Korea, surplus up 7% to \$1,133 million
- USA, deficit down 11% to \$3,098 million
- Germany, deficit down 4% to \$1,161 million

BY COMMODITY

MAJOR EXPORTS

- Coal, up 13% to \$2,253 million
- Crude petroleum oils, up 12% to \$1,704 million
- Non monetary gold, up 1% to \$1,331 million
- Iron ore concentrates, up 31% to \$1,122 million

MAJOR IMPORTS

- Passenger motor vehicles, up 23% to \$1,897 million
- Crude petroleum oils, up 53% to \$1,862 million
- Telecommunications equipment, up 11% to \$1,506 million
- Data processing machines, up 30% to \$1,478 million

CONTENTS

	page
Notes	2
Analyses and comments	3
Feature article: Data quality and client queries	10
List of tables	13
Tables	15
Explanatory notes	68
Appendix: Major country groups	73
Feature articles in recent issues of this publication	75

NOTES

FORTHCOMING ISSUES

ISSUE (Quarter)

RELEASE DATE

September 2000

20 November 2000

December 2000

20 February 2001



CHANGES IN THIS ISSUE

This issue contains a feature article, *International Trade Review: Data quality and client queries*. The article outlines recent changes to the quality checks applied to trade data and explains changes to the procedures for handling client data queries.



REVISIONS

Revisions since the last issue of this publication have:

- increased total exports for the March quarter 2000 by \$36 million, and increased total exports for the year ended March 2000 by \$35 million;
- increased total imports for the March quarter 2000 by \$40 million, and increased total imports for the year ended March 2000 by \$96 million; and
- increased the merchandise trade deficit for the March quarter 2000 by \$5 million, and increased the merchandise trade deficit for the year ended March 2000 by \$62 million.

The revisions for exports resulted from generally small changes to a large number of commodities and countries, with no significant contributors. The revisions for imports were mainly due to revisions to Petroleum, petroleum products and related materials.



Dennis Trewin
Australian Statistician

QUARTERLY ANALYSIS AND COMMENTS

EXCESS OF MERCHANDISE EXPORTS OR IMPORTS

In the June quarter 2000 merchandise imports exceeded merchandise exports by \$2,147 million, a \$405 million decrease from the merchandise trade deficit recorded in the March quarter 2000. In the June quarter 2000 merchandise exports rose by \$2,785 million and merchandise imports rose by \$2,380 million.

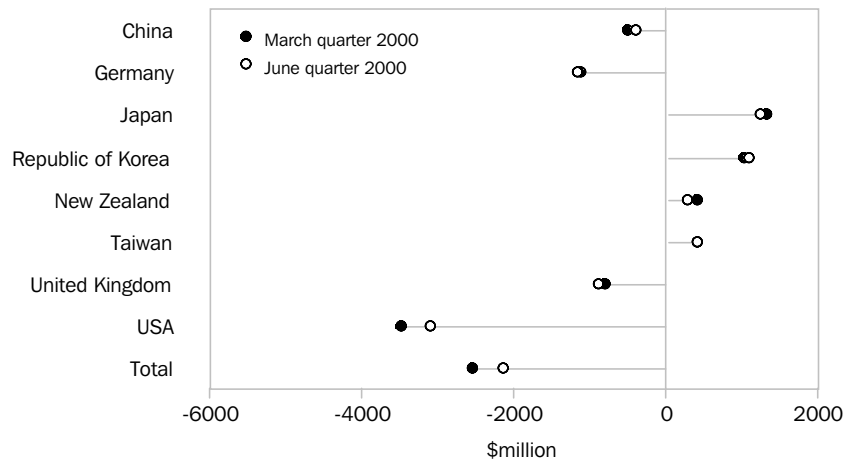
Australia's trade with its major trading partners produced surpluses with:

- Japan, down \$83 million (6%) to \$1,279 million;
- Republic of Korea, up \$72 million (7%) to \$1,133 million;
- Taiwan, steady at \$445 million; and
- New Zealand, down \$120 million (28%) to \$319 million

Deficits were recorded with:

- USA, down \$383 million (11%) to \$3,098 million;
- Germany, up \$43 million (4%) to \$1,161 million;
- United Kingdom, up \$102 million (13%) to \$901 million; and
- China, down \$111 million (22%) to \$399 million.

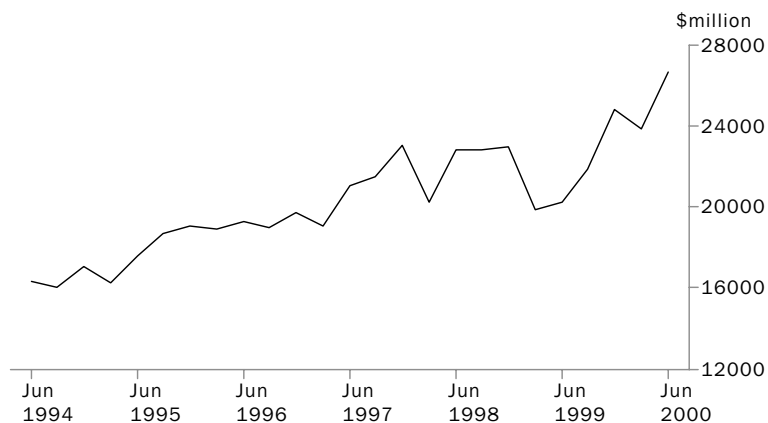
AUSTRALIA'S QUARTERLY TRADE WITH MAJOR COUNTRIES, Excess of exports (+) or imports (-)



MERCHANDISE EXPORTS

Merchandise exports for June quarter 2000 were \$26,656 million, up \$2,785 million or 12% on the previous quarter.

MERCHANDISE EXPORTS



MERCHANDISE EXPORTS
continued

The export commodity groups recording significant increases on the previous quarter were:

- *crude materials, inedible, except fuels*, up \$943 million (22%) to \$5,323 million (due mainly to increased exports of Metalliferous ores and metal scrap; and Textile fibres and their wastes (not manufactured into yarn or fabric));
- *machinery and transport equipment*, up \$384 million (15%) to \$2,932 million (due mainly to increased exports of Telecommunications and sound recording and reproducing apparatus and equipment; and Electrical machinery, apparatus, appliances, parts);
- *chemical and related products, n.e.s.*, up \$160 million (16%) to \$1,160 million (due mainly to increased exports of Medicinal and pharmaceutical products; and Dyeing, tanning and colouring materials);
- *beverages and tobacco*, up \$87 million (25%) to \$437 million (due mainly to increased exports of Beverages);
- *manufactured goods classified chiefly by material*, up \$341 million (11%) to \$3,448 million (due mainly to increased exports of Iron and steel; and Non-ferrous metals); and
- *miscellaneous manufactured articles*, up \$48 million (5%) to \$972 million (due mainly to increased exports of Articles of apparel and clothing accessories; Professional, scientific and controlling instruments and apparatus, n.e.s.; and Miscellaneous manufactured articles, n.e.s.).

There were no decreases recorded for any commodity group for exports in the June quarter 2000.

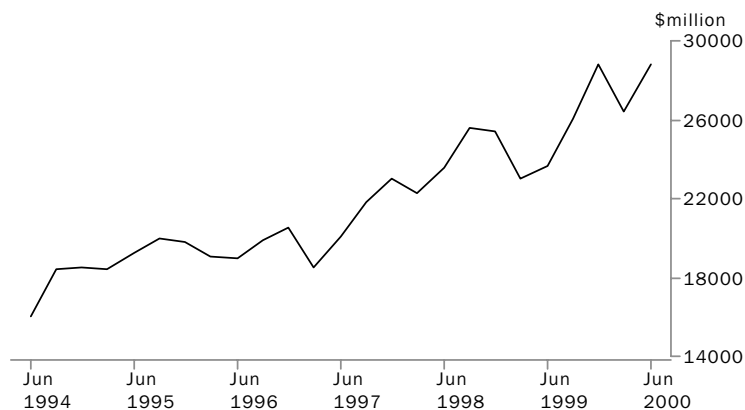
In the June quarter 2000 the major export destinations for Australia's goods were:

- Japan, up \$372 million (8%) to \$5,070 million;
- USA, up \$521 million (24%) to \$2,738 million;
- Republic of Korea, up \$322 million (16%) to \$2,370 million;
- China, up \$189 million (15%) to \$1,485 million;
- New Zealand, up \$40 million (3%) to \$1,481 million;
- Singapore, up \$240 million (20%) to \$1,434 million;
- Taiwan, up \$95 million (8%) to \$1,322 million; and
- United Kingdom, up \$95 million (11%) to \$967 million.

MERCHANDISE IMPORTS

Merchandise imports for June quarter 2000 were \$28,803 million, up \$2,380 million, or 9% on the previous quarter.

MERCHANDISE IMPORTS



MERCHANDISE IMPORTS

continued

The import commodity groups recording significant increases on the previous quarter were:

- *mineral fuels, lubricants and related materials*, up \$781 million (47%) to \$2,453 million (due mainly to increased exports of Petroleum, petroleum products and related materials);
- *machinery and transport equipment*, up \$1,461 million (12%) to \$13,573 million (due mainly to increased exports of Office machines and automatic data processing machines; and Road vehicles (including air-cushion vehicles));
- *crude materials, inedible, except fuels*, up \$64 million (14%) to \$519 million (due mainly to increased exports of Cork and wood; and Pulp and waste paper);
- *commodities and transactions not classified elsewhere in the SITC*, up \$7 million (1%) to \$590 million (due mainly to increased exports of Gold, non-monetary (excluding gold ores and concentrates)).

Decreases were recorded for *food and live animals* (due mainly to decreased exports of Fish (not marine mammals), crustaceans, molluscs and aquatic invertebrates, and preparations thereof; and Coffee, tea, cocoa, spices and manufactures thereof); and *chemical and related products, n.e.s.* (due mainly to decreased exports of Organic chemicals).

In the June quarter 2000 the major sources for Australian imports were:

- USA, up \$139 million (2%) to \$5,836 million;
- Japan, up \$455 million (14%) to \$3,791 million;
- China, up \$78 million (4%) to \$1,884 million;
- United Kingdom, up \$196 million (12%) to \$1,867 million;
- Germany, up \$97 million (7%) to \$1,508 million;
- Republic of Korea, up \$249 million (25%) to \$1,236 million;
- New Zealand, up \$160 million (16%) to \$1,162 million; and
- Malaysia, up \$146 million (16%) to \$1,043 million.

ANNUAL ANALYSIS AND COMMENTS

EXCESS OF MERCHANDISE EXPORTS OR IMPORTS

For the year ended June 2000 merchandise imports exceeded merchandise exports by \$12,828 million, an increase of \$1,209 million from the deficit recorded for the previous year.

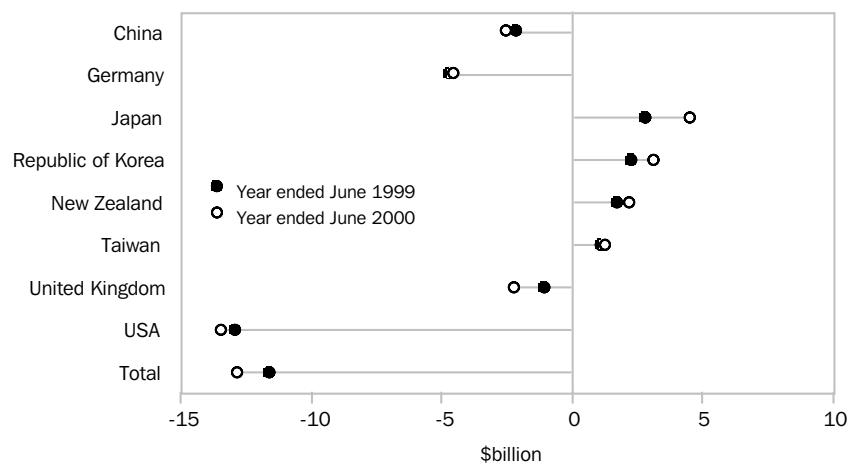
Australia's trade with its major trading partners produced deficits with:

- USA, up \$516 million (4%) to \$13,426 million;
- Germany, down \$126 million (3%) to \$4,546 million;
- China, up \$402 million (19%) to \$2,560 million; and
- United Kingdom, up \$1,127 million (105%) to \$2,199 million.

Surpluses were recorded with:

- Japan, up \$1,683 million (56%) to \$4,662 million;
- Republic of Korea, up \$878 million (36%) to \$3,304 million;
- New Zealand, up \$471 million (25%) to \$2,359 million; and
- Taiwan, up \$218 million (18%) to \$1,442 million.

AUSTRALIA'S ANNUAL TRADE WITH MAJOR COUNTRIES, Excess of exports (+) or imports (-)



MERCHANDISE EXPORTS

Merchandise exports for the year ended June 2000 were \$97,255 million, up \$11,263 million or 13% on the previous year.

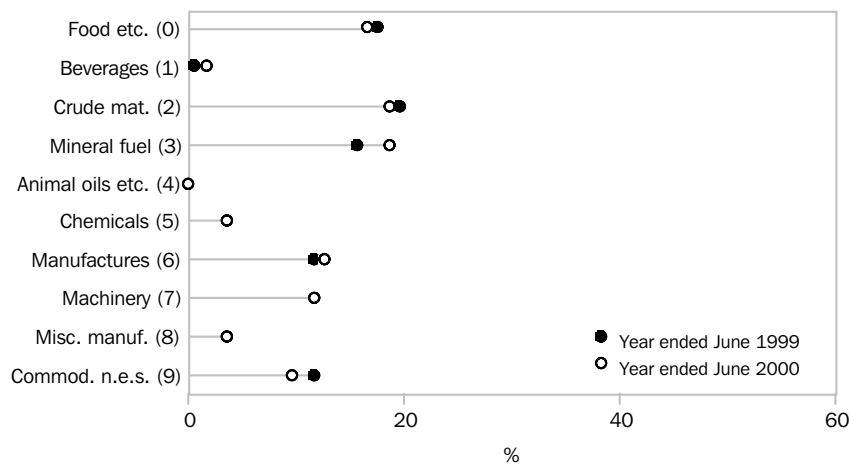
The exports commodity groups recording significant increases on the previous year were:

- *mineral fuels, lubricants and related materials*, up \$3,920 million (28%) to \$18,066 million (due mainly to increased exports of Petroleum, petroleum products and related materials);
- *manufactured goods classified chiefly by material*, up \$2,140 million (21%) to \$12,313 million (due mainly to increased exports of Non-ferrous metals)
- *beverages and tobacco*, up \$330 million (27%) to \$1,570 million (due mainly to increased exports of Beverages);
- *chemical and related products, n.e.s.* up \$608 million (17%) to \$4,193 million (due mainly to increased exports of Medicinal and pharmaceutical products; and Inorganic chemicals); and
- *machinery and transport equipment*, up \$1,320 million (13%) to \$11,606 million (due mainly to increased exports of Telecommunications and sound recording and reproducing apparatus and equipment).

MERCHANDISE EXPORTS
continued

The only decrease was recorded for *animal and vegetable oils, fats and waxes*, down \$77 million (20%) to \$302 million (due mainly to decreased exports of Animal oils and fats).

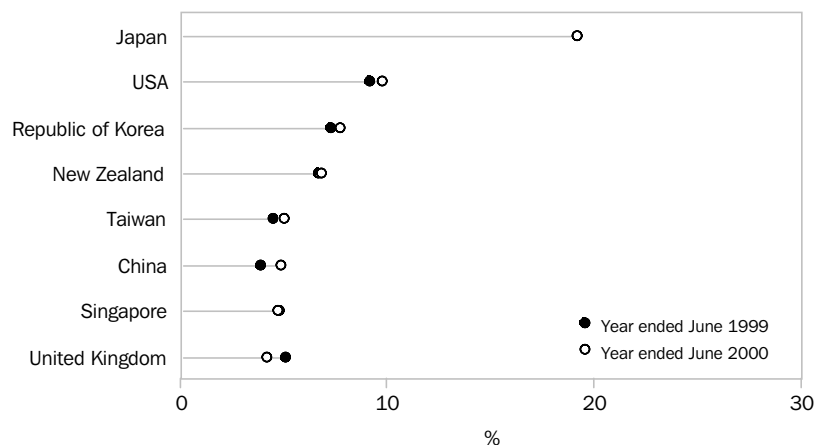
COMMODITY COMPOSITION (SITC SECTION) OF EXPORTS



Australia's major export destinations for the year ended June 2000 were:

- Japan, up \$2,234 million (13%) to \$18,800 million;
- USA, up \$1,593 million (20%) to \$9,577 million;
- Republic of Korea, up \$1,295 million (20%) to \$7,615 million;
- New Zealand, up \$893 million (15%) to \$6,731 million;
- China, up \$1,011 million (26%) to \$4,959 million;
- Singapore, up \$1,443 million (42%) to \$4,860 million;
- Taiwan, up \$484 million (12%) to \$4,687 million; and
- United Kingdom, down \$317 million (7%) to \$4,156 million.

COUNTRY COMPOSITION OF EXPORTS



MERCHANDISE IMPORTS

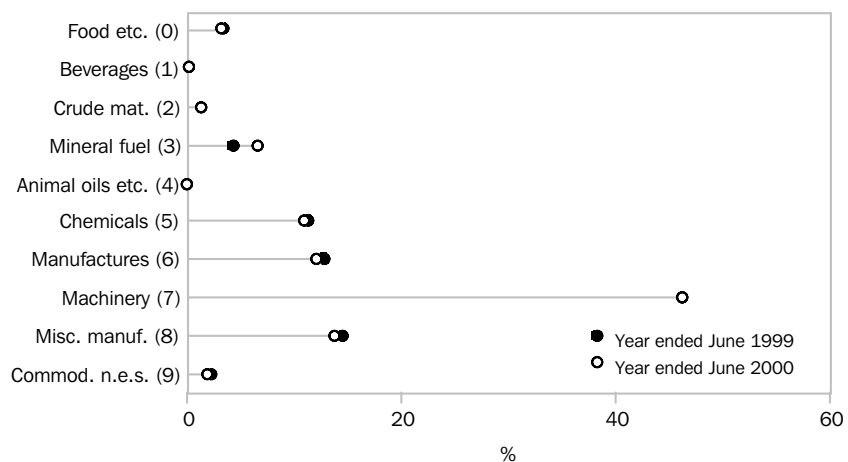
Merchandise imports for the year ended June 2000 were \$110,083 million, up \$12,472 million or 13% on the previous year.

The imports commodity groups recording significant increases on the previous year were:

- *mineral fuels, lubricants and related materials*, up \$3,059 million (66%) to \$7,680 million (due mainly to increased imports of Petroleum, petroleum products and related materials);
- *machinery and transport equipment*, up \$5,931 million (13%) to \$51,349 million (due mainly to increased imports of Transport equipment (excluding road vehicles); and Telecommunications and sound recording and reproducing apparatus and equipment);
- *crude materials, inedible, except fuels*, up \$237 million (15%) to \$1,848 million (due mainly to increased imports of Cork and wood);
- *beverages and tobacco*, up \$85 million (14%) to \$707 million (due mainly to increased imports of Beverages); and
- *chemical and related products, n.e.s.*, up \$1,063 million (9%) to \$12,498 million (due mainly to increased imports of Organic chemicals; and Medicinal and pharmaceutical products).

The only decrease was recorded for *animal and vegetable oils, fats and waxes*, down \$19 million (6%) to \$277 million.

COMMODITY COMPOSITION (SITC SECTION) OF IMPORTS



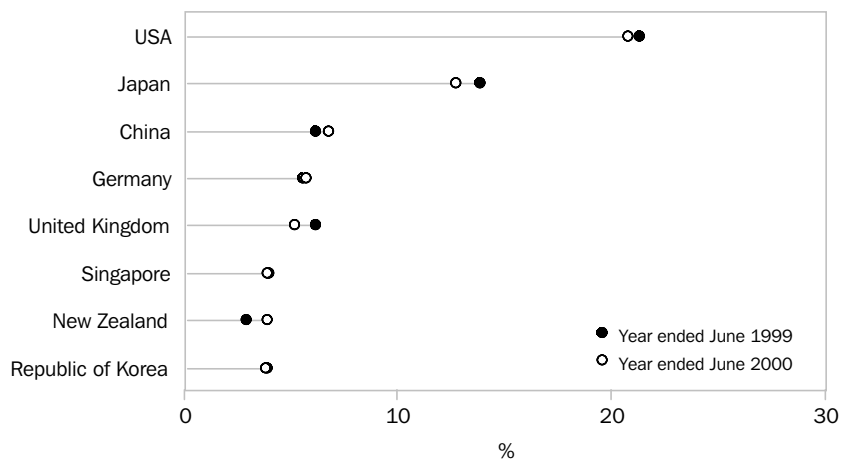
Australia's major import sources for the year ended June 2000 were:

- USA, up \$2,110 million (10%) to \$23,003 million;
- Japan, up \$551 million (4%) to \$14,138 million;
- China, up \$1,414 million (23%) to \$7,520 million;
- United Kingdom, up \$811 million (15%) to \$6,356 million;
- Germany, down \$290 million (5%) to \$5,792 million;
- New Zealand, up \$423 million (11%) to \$4,373 million;
- Singapore, up \$1,414 million (48%) to \$4,358 million; and
- Republic of Korea, up \$417 million (11%) to \$4,311 million.

MERCHANDISE IMPORTS

continued

COUNTRY COMPOSITION OF IMPORTS



INTERNATIONAL TRADE REVIEW: DATA QUALITY AND CLIENT QUERIES

INTRODUCTION

The ABS has recently introduced changes to some of its procedures for compiling international merchandise trade statistics. The changes were made following a review of its international trade program.

The Review covered all elements of the program, including:

- user needs and priorities;
- the efficiency of data receipt and processing;
- possible alternative data dissemination options; and
- broad strategic directions for the next 3 years.

The Review concluded that, to meet core internal and international statistical requirements, the ABS needed to maintain and release international merchandise trade statistics to at least the six digit level of the Harmonized System (HS) commodity classification. It also needed to undertake sufficient editing to ensure the quality requirements for macro-economic statistics, such as the Balance of Payments and the National Accounts.

The Review recognised the need to continue to produce more detailed commodity estimates to meet the demonstrated needs of both private sector and government users. However, while there is a clear demand for detailed trade data beyond the six digit HS level, its provision could not be considered ABS core business and, as such, there needed to be full recovery of the direct costs associated with this service.

The Review determined that there was not full recovery of the direct costs and proposed actions to bring costs and revenue into approximate balance. These are detailed in this article. It is anticipated that these measures will have very limited impact on the usefulness of trade data or on its overall quality.

DATA QUALITY CHECKS

The Review found that significant resources were being expended on amendments to small value records which rarely, if ever, impacted on the broad aggregates used for macro-economic statistics. Most of the amendments related to quantity or classification, rather than value.

The ABS has never had the resources to comprehensively assure the quality of all import and export data. The large bulk of transactions included in international merchandise trade statistics are 'as reported to Customs' and this will continue to be the case in the future.

ABS procedures are designed to ensure that sufficient editing is undertaken to guarantee the quality and integrity of trade data to at least the six digit HS level. Most of the limited resources available are directed at ensuring that large value transactions are correct.

CHANGES

From 1 July 2000, the ABS has:

- ceased unit value editing of export records valued below \$250,000;
- ceased unit value editing of import records valued below \$1million; and
- introduced automatic adjustment of quantity for import records valued below \$1million, where the source of error relates to known areas of misreported quantity, such as tonnes instead of kilograms, litres instead of kilolitres (or vice versa) or the misplacement of decimal points.

EDITING

Unit value editing involves checking the unit value (value divided by quantity) for each transaction that has a reported quantity. The ABS international trade system stores unit value ranges, calculated from previously edited transactions, for every commodity code for which a quantity is required.

New transactions with unit values outside the specified range for the commodity are flagged for examination by an editor. The changes implemented on 1 July 2000 only affect records with values below the unit value editing thresholds stated i.e. unit value editing will continue for records valued above the specified thresholds.

All other editing procedures currently undertaken by the ABS will continue. These include:

- identification of all transactions with a value of \$2million or more. The details (including commodity code, country, state, value and quantity) of these transactions are checked, and where necessary, confirmed with the exporter, importer or agent;
- legality checks on all transactions to ensure that valid and up-to-date commodity, country, state and port codes are reported, and all mandatory fields are completed and in the correct format;
- internal consistency checks e.g. to identify records where the gross weight is less than the net quantity, or to ensure that an export of aviation fuel for consumption on an international route has air as its mode of transport and an airport as its Australian port;
- tailored edits for specific commodities and / or countries and / or states. Examples include checks of minerals which are only mined in certain states; prohibited or illegal imports; and exports of commodities not manufactured in Australia;
- automatic adjustment of known recurring reporting errors. These may be applied as a result of an investigation which identified misreporting of commodity, country, state or quantity by particular exporters, importers or their agents. Recurring errors are also referred to Customs for audit action;
- analyses of monthly aggregates to explain and, if necessary, correct any unusual movements or features. For example, duplicate records may be detected and deleted, or significant commodity movements may be explained by price or volume changes; and
- compilation of validation tables to account for all data received from Customs and all editing changes.

SPECIAL INVESTIGATIONS

The ABS may examine the quality of data reported for particular commodities or chapters of the HS classification. After contact with the relevant exporters or importers, a variety of solutions, including tailored edit checks, may be implemented. These investigations are time consuming and resource intensive and will only be undertaken for significant commodities or chapters, where there are known to be frequent and serious reporting problems.

The ABS has participated in bilateral reconciliation studies with the United States, the European Union, Japan and New Zealand. These studies involve comparing partner countries' estimates of their transactions with Australia with Australia's estimates of its transactions with those countries. The purpose is to identify the causes of data discrepancies and to quantify any major coverage or quality deficiencies, after taking into account known conceptual and methodological differences.

CLIENT DATA QUERIES

After the release of monthly trade statistics, the ABS usually receives a number of client requests to investigate cases of possible misreporting. Most relate to potential errors at the most detailed level of the commodity classification. The most frequently amended field is quantity, followed by classification and country details.

Previously, where data errors were suspected by clients, an investigation was undertaken free of charge, regardless of the value or volume of trade involved. Where errors were identified, the data were amended and the revisions incorporated in the next release of trade statistics.

CHANGES

Client requests for data investigations will now only be considered, if the value of the aggregate data queried exceeds \$250,000 in each month queried, and the cost of the investigation is met by the client.

Clients interested in this service should be aware that the following factors will limit the ability of the ABS to confirm / amend trade data:

- the goods descriptions provided on export and import documentation is often not sufficient to determine the correct code at the most detailed level of the commodity classification. In these cases, the ABS is usually unable to obtain sufficient information to amend the classification code originally provided; and
- transaction records are processed for a limited period, due to the costs involved in storing and processing large amounts of data. After trade data are published, the latest month's export and import transactions are subject to amendment by further processing for six months and three months respectively, before the records are archived. As a result, data quality queries which are not identified within those periods cannot be investigated.

Additional criteria are used to assess requests for detailed data investigations. These include the significance of the potential amendments to value or classification, the seriousness or evidence of systemic reporting problems, evidence of data error, and the burden the investigation would place on data providers.

Clients who wish to request data queries, or better understand the process and charges involved, should obtain a copy of an ABS booklet titled *International Trade: Ensuring Data Quality*. Copies can be obtained from the Exports or Imports Managers on telephone (02) 6252 5401 (exports) or (02) 6252 5108 (imports), by faxing (02) 6252 7438, or by sending an email message to international.trade@abs.gov.au.

CONCLUSION

The changes made to unit value editing practices will have virtually no impact on the broad commodity and country aggregates released by the ABS in this and other publications. Their impact on more detailed statistics provided to ABS clients is expected to be minimal.

The changes to client data query investigations mean that queries on low value aggregates will not be investigated. Other queries will only be considered if the client is willing to pay for the cost of the service. There may, therefore, be some reduction in the usefulness of very fine level data to clients who use it at that level e.g. low value commodity details by country and / or state.

LIST OF TABLES

		page
COUNTRY TABLES	1 Merchandise exports by country	15
	2 Merchandise exports by major country group	15
	3 Merchandise imports by country	16
	4 Merchandise imports by major country group	16
	5 Excess of exports over imports by country	17
	6 Excess of exports over imports by major country group	17
	7 Exports and imports by country	18
	8 Exports and imports by major country group	21
COMMODITY TABLES	9 Exports of major commodities	22
	10 Imports of major commodities	23
	11 Exports and imports by commodity—quarterly	24
	12 Exports and imports by commodity—12 month totals	26
COUNTRY BY COMMODITY TABLES	13 Exports and imports by commodity—China	28
	14 Exports and imports by commodity—Germany	30
	15 Exports and imports by commodity—Japan	32
	16 Exports and imports by commodity—Korea, Republic Of	34
	17 Exports and imports by commodity—New Zealand	36
	18 Exports and imports by commodity—Taiwan	38
	19 Exports and imports by commodity—United Kingdom	40
	20 Exports and imports by commodity—United States of America	42
	21 Exports and imports by commodity—Asia Pacific Economic Co-operation (APEC) .	44
	22 Exports and imports by commodity—Association of South East Asian Nations (ASEAN)	46
	23 Exports and imports by commodity—Developing Countries (DCs)	48
	24 Exports and imports by commodity—European Union (EU)	50
STATE TABLES	25 Exports by State	52
	26 Imports by State	53
INDUSTRY TABLES	27 Exports by industry of origin (ANZSIC)	54
	28 Imports by industry of origin (ANZSIC)	55
END USE TABLES	29 Exports by Broad Economic Categories (BEC)	56
	30 Imports by Broad Economic Categories (BEC)	57
HISTORICAL TABLES	31 Historical exports by commodity	58
	32 Historical imports by commodity	62
	33 Historical exports by country	66
	34 Historical imports by country	67

1

MERCHANDISE EXPORTS, By Country

	China	Germany	Japan	Korea, Republic of	New Zealand	Taiwan	United Kingdom	United States of America	Total
Period	\$m	\$m	\$m	\$m	\$m	\$m	\$m	\$m	\$m
1997-1998	3 872	1 243	17 580	6 397	5 662	4 180	3 040	7 794	87 768
1998-1999	3 948	1 409	16 566	6 320	5 838	4 203	4 473	7 984	85 992
1999-2000	4 959	1 246	18 800	7 615	6 731	4 687	4 156	9 577	97 255
1998									
September	945	374	4 457	1 606	1 482	1 075	1 585	2 133	22 830
December	1 090	365	4 438	1 632	1 492	1 103	1 468	2 062	22 996
1999									
March	982	350	3 878	1 534	1 368	1 006	695	1 766	19 873
June	930	321	3 794	1 548	1 497	1 019	725	2 023	20 293
September	1 046	289	4 354	1 412	1 609	1 016	806	2 251	21 899
December	1 133	316	4 679	1 786	2 200	1 123	1 512	2 371	24 830
2000									
March	1 296	294	4 698	2 048	1 441	1 227	872	2 217	23 871
June	1 485	348	5 070	2 370	1 481	1 322	967	2 738	26 656

2

MERCHANDISE EXPORTS, By Major Country Group(a)

	Asia Pacific Economic Co-operation (APEC)	Association of South East Asian Nations (ASEAN)	Developing Countries (DCs)	European Union (EU)
Period	\$m	\$m	\$m	\$m
1997-1998	64 210	11 504	40 150	10 236
1998-1999	61 355	10 403	38 814	11 629
1999-2000	71 125	12 851	44 326	12 039
1998				
September	15 885	2 498	9 932	3 425
December	16 098	2 768	10 288	3 267
1999				
March	14 405	2 294	9 182	2 494
June	14 968	2 842	9 412	2 444
September	16 118	3 064	9 751	2 452
December	17 844	3 014	10 703	3 454
2000				
March	17 485	3 041	11 320	2 831
June	19 679	3 732	12 553	3 302

(a) Countries included in country groups are shown in the Appendix.

3

MERCHANDISE IMPORTS, By Country

	China	Germany	Japan	Korea, Republic of	New Zealand	Taiwan	United Kingdom	United States of America	Total
Period	\$m	\$m	\$m	\$m	\$m	\$m	\$m	\$m	\$m
1997-1998	5 303	5 207	12 660	3 767	3 723	2 809	5 593	19 834	90 684
1998-1999	6 106	6 082	13 587	3 894	3 950	2 978	5 545	20 893	97 611
1999-2000	7 520	5 792	14 138	4 311	4 373	3 244	6 356	23 003	110 083
1998									
September	1 725	1 561	3 458	1 141	1 003	792	1 559	5 487	25 594
December	1 597	1 566	3 504	937	1 048	785	1 396	5 737	25 357
1999									
March	1 461	1 529	3 278	902	910	690	1 318	4 668	23 041
June	1 322	1 426	3 348	915	990	711	1 272	5 002	23 619
September	1 907	1 373	3 522	875	1 069	767	1 415	5 477	26 017
December	1 923	1 500	3 488	1 213	1 139	821	1 402	5 992	28 839
2000									
March	1 806	1 411	3 336	987	1 002	781	1 671	5 697	26 423
June	1 884	1 508	3 791	1 236	1 162	876	1 867	5 836	28 803

4

MERCHANDISE IMPORTS, By Major Country Group(a)

	Asia Pacific Economic Co-operation (APEC)	Association of South East Asian Nations (ASEAN)	Developing Countries (DCs)	European Union (EU)
Period	\$m	\$m	\$m	\$m
1997-1998	62 542	10 495	28 136	21 824
1998-1999	68 128	12 367	31 065	23 327
1999-2000	77 749	15 661	37 746	24 366
1998				
September	17 924	3 221	8 399	6 070
December	17 870	3 138	7 946	5 979
1999				
March	15 762	2 852	7 265	5 759
June	16 572	3 156	7 455	5 518
September	18 273	3 397	8 515	5 856
December	20 836	4 835	10 680	5 987
2000				
March	18 457	3 469	8 591	6 164
June	20 184	3 961	9 960	6 358

(a) Countries included in country groups are shown in the Appendix.

5

EXCESS OF EXPORTS OVER IMPORTS, By Country(a)

Period	China \$m	Germany \$m	Japan \$m	Korea, Republic of \$m	New Zealand \$m	Taiwan \$m	United Kingdom \$m	United States of America \$m	Total \$m
1997-1998	-1 431	-3 964	4 920	2 631	1 939	1 371	-2 553	-12 040	-2 917
1998-1999	-2 158	-4 672	2 979	2 426	1 888	1 224	-1 072	-12 910	-11 620
1999-2000	-2 560	-4 546	4 662	3 304	2 359	1 442	-2 199	-13 426	-12 828
1998									
September	- 780	-1 187	999	465	479	283	26	-3 354	-2 764
December	- 508	-1 201	934	696	444	318	72	-3 675	-2 361
1999									
March	- 478	-1 179	600	632	458	316	- 623	-2 901	-3 168
June	- 392	-1 105	446	633	507	308	- 547	-2 980	-3 326
September	- 861	-1 084	831	537	540	249	- 609	-3 226	-4 118
December	- 790	-1 184	1 191	573	1 061	302	110	-3 622	-4 010
2000									
March	- 510	-1 118	1 362	1 061	439	446	- 799	-3 481	-2 552
June	- 399	-1 161	1 279	1 133	319	445	- 901	-3 098	-2 147

(a) A negative sign indicates that imports exceed exports.

6

EXCESS OF EXPORTS OVER IMPORTS, By Major Country Group(a)(b)

Period	Asia Pacific Economic Co-operation (APEC) \$m	Association of South East Asian Nations (ASEAN) \$m	Developing Countries (DCs) \$m	European Union (EU) \$m
1997-1998	1 669	1 008	12 014	-11 588
1998-1999	-6 773	-1 964	7 749	-11 697
1999-2000	-6 624	-2 810	6 580	-12 327
1998				
September	-2 040	- 722	1 533	-2 645
December	-1 772	- 369	2 343	-2 712
1999				
March	-1 357	- 558	1 917	-3 266
June	-1 605	- 314	1 957	-3 074
September	-2 155	- 333	1 237	-3 405
December	-2 992	-1 821	22	-2 533
2000				
March	- 972	- 428	2 729	-3 333
June	- 505	- 228	2 593	-3 056

(a) Countries included in country groups are shown in the Appendix.

(b) A negative sign indicates that imports exceed exports.

EXPORTS AND IMPORTS, By Country

Country	MAR QTR 2000		JUN QTR 2000		12 MONTHS ENDED JUN 1999		12 MONTHS ENDED JUN 2000	
	<i>Exports</i>	<i>Imports</i>	<i>Exports</i>	<i>Imports</i>	<i>Exports</i>	<i>Imports</i>	<i>Exports</i>	<i>Imports</i>
	\$m	\$m	\$m	\$m	\$m	\$m	\$m	\$m
Algeria	7	—	14	5	58	—	49	5
Angola	—	—	1	—	2	—	2	—
Argentina	19	23	19	17	123	86	96	73
Australia (Re-imports)	—	124	—	127	—	333	—	463
Austria	12	105	14	123	44	474	51	484
Bahamas	1	3	3	3	4	10	5	11
Bahrain(a)	16	15	18	19	75	25	69	58
Bangladesh	53	7	92	33	289	43	296	54
Barbados	1	—	1	—	5	1	7	—
Belgium-Luxembourg	230	188	286	183	1 085	662	1 090	737
Bolivia	—	1	—	1	1	2	1	3
Brazil	125	138	135	127	447	342	470	441
Brunei Darussalam	10	81	10	47	49	11	40	211
Bulgaria	1	1	1	2	26	7	3	6
Cambodia	3	1	3	—	14	1	11	2
Canada	254	523	288	473	1 274	1 547	1 176	1 856
Cayman Islands	—	—	—	—	—	—	1	—
Chile	28	14	51	20	212	68	129	61
China	1 296	1 806	1 485	1 884	3 948	6 106	4 959	7 520
Christmas Island	3	2	6	—	13	9	17	9
Cocos (Keeling) Island	1	—	1	—	4	—	5	—
Colombia	2	5	4	4	19	19	25	18
Cook Islands	1	1	2	1	6	2	5	3
Costa Rica	1	3	3	6	3	27	5	21
Cote d'Ivoire	1	2	1	3	1	13	7	11
Croatia	—	3	—	2	6	8	2	10
Cuba	1	2	—	1	3	4	2	5
Cyprus	3	1	4	1	14	3	12	4
Czech Republic	15	18	18	18	53	67	58	67
Denmark	83	137	17	134	77	459	140	542
Dominican Republic	4	1	4	1	16	3	11	3
Ecuador	1	1	1	—	9	3	3	3
Egypt(a)	162	4	144	3	588	11	502	16
Ethiopia	2	1	2	1	20	2	7	2
Fiji	134	84	112	73	556	349	592	356
Finland	74	169	145	172	191	601	371	668
France	214	598	217	529	914	2 202	871	2 245
French Polynesia	55	1	42	2	102	8	171	6
Germany	294	1 411	348	1 508	1 409	6 082	1 246	5 792
Ghana	9	1	19	1	56	7	57	6
Greece	22	25	57	27	55	101	102	97
Guam	4	—	6	—	18	—	19	—
Guatemala	2	1	2	1	19	4	9	3
Hong Kong (SAR of China)	891	271	788	299	3 071	1 228	3 208	1 280
Hungary	1	17	3	24	7	66	7	78
Iceland(a)	—	1	1	—	4	3	3	3
India	335	176	478	160	1 837	666	1 595	715
Indonesia	530	552	734	644	2 199	3 275	2 401	2 701
Iran	150	7	74	9	450	27	410	29
Iraq	162	—	147	30	267	143	456	74
Ireland	25	225	38	223	174	1 000	134	937
Israel	48	114	70	92	159	386	191	442
Italy	393	769	448	786	1 564	2 916	1 574	3 044
Jamaica	9	—	15	—	19	1	46	1
Japan	4 698	3 336	5 070	3 791	16 566	13 587	18 800	14 138
Jordan	13	3	27	—	88	26	87	12

EXPORTS AND IMPORTS, By Country *continued*

Country	MAR QTR 2000		JUN QTR 2000		12 MONTHS ENDED JUN 1999		12 MONTHS ENDED JUN 2000	
	<i>Exports</i>	<i>Imports</i>	<i>Exports</i>	<i>Imports</i>	<i>Exports</i>	<i>Imports</i>	<i>Exports</i>	<i>Imports</i>
	\$m	\$m	\$m	\$m	\$m	\$m	\$m	\$m
Kenya	20	5	18	4	78	21	54	16
Kiribati	7	—	7	—	28	1	27	—
Korea, Republic of	2 048	987	2 370	1 236	6 320	3 894	7 615	4 311
Kuwait	71	13	62	35	274	54	299	106
Laos	1	—	—	1	4	—	2	1
Lebanon	13	1	26	2	40	7	57	7
Libya	11	—	3	—	58	—	33	—
Lithuania	—	—	—	—	9	1	3	3
Macau (SAR of China)	4	2	5	1	15	7	16	7
Madagascar	1	—	1	—	7	1	4	1
Malawi	—	—	—	1	2	6	1	7
Malaysia	507	897	566	1 043	1 859	2 845	2 138	3 768
Maldives	2	—	1	—	6	—	7	—
Malta	3	1	3	1	13	4	13	5
Marianas Northern	1	—	—	—	3	—	2	—
Marshall Islands	1	—	1	—	6	—	6	—
Mauritius	24	1	29	1	106	2	109	3
Mexico	70	97	69	103	314	365	254	382
Micronesia, Fed States of	4	—	3	—	16	—	13	—
Morocco	5	6	2	8	29	26	13	27
Mozambique	18	—	5	—	21	—	36	—
Myanmar	5	4	5	3	13	12	17	17
Namibia	6	2	12	2	5	8	58	8
Nauru	7	1	5	2	17	6	23	7
Nepal	1	1	2	1	15	1	6	3
Netherlands	385	263	493	240	866	917	1 379	990
Netherlands Antilles	1	—	1	—	67	1	5	—
New Caledonia	45	10	49	11	184	46	200	48
New Zealand	1 441	1 002	1 481	1 162	5 838	3 950	6 731	4 373
Nigeria	3	—	5	34	14	12	19	61
Norfolk Island	5	—	5	1	17	1	18	1
Norway	20	37	28	31	159	206	113	149
Oman	56	23	55	31	131	16	203	86
Pakistan	155	38	56	36	475	162	532	156
Palau	1	—	—	—	1	—	2	—
Panama	7	—	7	—	2	—	20	—
Papua New Guinea	215	333	236	368	1 014	781	926	1 380
Peru	8	12	12	10	55	20	42	36
Philippines	325	112	355	121	1 207	405	1 304	457
Poland	5	9	4	9	22	35	20	38
Portugal	8	43	8	43	54	141	41	168
Puerto Rico	2	74	2	65	7	124	6	192
Qatar	17	20	18	36	67	74	69	170
Romania	9	3	20	3	78	9	62	9
Russian Federation	57	8	43	40	170	23	189	59
Samoa	10	11	11	16	31	56	41	58
Samoa (American)	20	1	18	1	14	4	46	3
Saudi Arabia	357	227	317	415	1 060	532	1 333	1 001
Seychelles	1	—	1	—	7	—	5	—
Singapore	1 194	803	1 434	1 002	3 417	2 944	4 860	4 358
Slovak Republic	1	1	2	1	4	8	6	6
Slovenia	1	8	2	8	12	35	11	33
Solomon Islands	19	1	15	1	98	4	83	4
South Africa	277	152	289	236	944	537	1 039	749
Spain	191	164	219	151	562	653	714	660
Sri Lanka	60	19	71	18	242	75	221	76
Sudan	9	—	25	—	50	—	67	46
Sweden	28	398	46	371	160	1 575	169	1 646
Switzerland	45	340	58	327	443	1 092	319	1 283
Syria	3	—	4	—	14	1	16	1

EXPORTS AND IMPORTS, By Country *continued*

Country	MAR QTR 2000		JUN QTR 2000		12 MONTHS ENDED JUN 1999		12 MONTHS ENDED JUN 2000	
	<i>Exports</i>	<i>Imports</i>	<i>Exports</i>	<i>Imports</i>	<i>Exports</i>	<i>Imports</i>	<i>Exports</i>	<i>Imports</i>
	\$m	\$m	\$m	\$m	\$m	\$m	\$m	\$m
Taiwan	1 227	781	1 322	876	4 203	2 978	4 687	3 244
Tanzania	25	2	18	1	70	5	84	5
Thailand	369	577	520	640	1 306	1 902	1 703	2 422
Tonga	3	—	4	—	17	1	15	1
Trinidad and Tobago	8	—	9	—	29	1	35	1
Tunisia	1	2	3	—	15	16	6	3
Turkey	48	34	77	34	349	114	230	134
Uganda	—	4	1	4	2	6	6	15
Ukraine	5	3	8	—	9	8	31	7
United Arab Emirates	235	65	217	132	835	201	874	401
United Kingdom	872	1 671	967	1 867	4 473	5 545	4 156	6 356
United States of America	2 217	5 697	2 738	5 836	7 984	20 893	9 577	23 003
United States Virgin Islands	—	—	—	—	1	—	1	1
Uruguay	3	1	4	1	11	6	11	4
Vanuatu	12	—	12	—	49	1	53	1
Venezuela	1	—	4	—	15	2	14	1
Viet Nam	102	443	107	460	349	972	385	1 726
Wallis and Futuna Islands	2	—	1	—	8	—	7	—
Yemen	32	—	25	67	119	42	131	67
Zimbabwe	2	1	1	4	15	12	9	16
Zone of Coop A-Timor Gap	16	23	1	12	25	41	28	64
Other Countries	31	9	27	9	146	78	135	90
Destination or Origin Unknown	—	7	2	10	1	61	2	219
International Waters	146	—	174	—	125	—	626	—
No Country Details(a)	114	—	111	—	412	—	444	—
Ship and aircraft stores	193	—	203	—	467	—	734	—
Unidentified(b)	—	—	45	—	—	—	45	—
Total trade	23 871	26 423	26 656	28 803	85 992	97 611	97 255	110 083

(a) Exports of Alumina to Bahrain, Egypt and Iceland are excluded from country totals and included in the 'No Country Details' category.

(b) Includes \$45 million of exports for June 2000 which cannot yet be allocated by country.

EXPORTS AND IMPORTS, By Major Country Group

Country group	MAR QTR 2000		JUN QTR 2000		12 MONTHS ENDED JUN 1999		12 MONTHS ENDED JUN 2000	
	<i>Exports</i>	<i>Imports</i>	<i>Exports</i>	<i>Imports</i>	<i>Exports</i>	<i>Imports</i>	<i>Exports</i>	<i>Imports</i>
	\$m	\$m	\$m	\$m	\$m	\$m	\$m	\$m
Asia Pacific Economic								
Co-operation (APEC)	17 485	18 457	19 679	20 184	61 355	68 128	71 125	77 749
Australia (Re-imports)	—	124	—	127	—	333	—	463
Brunei Darussalam(a)	10	81	10	47	49	11	40	211
Canada	254	523	288	473	1 274	1 547	1 176	1 856
Chile	28	14	51	20	212	68	129	61
China	1 296	1 806	1 485	1 884	3 948	6 106	4 959	7 520
Hong Kong (SAR of China)	891	271	788	299	3 071	1 228	3 208	1 280
Indonesia(a)	530	552	734	644	2 199	3 275	2 401	2 701
Japan	4 698	3 336	5 070	3 791	16 566	13 587	18 800	14 138
Korea, Republic of	2 048	987	2 370	1 236	6 320	3 894	7 615	4 311
Malaysia(a)	507	897	566	1 043	1 859	2 845	2 138	3 768
Mexico	70	97	69	103	314	365	254	382
New Zealand	1 441	1 002	1 481	1 162	5 838	3 950	6 731	4 373
Papua New Guinea	215	333	236	368	1 014	781	926	1 380
Peru	8	12	12	10	55	20	42	36
Philippines(a)	325	112	355	121	1 207	405	1 304	457
Russian Federation	57	8	43	40	170	23	189	59
Singapore(a)	1 194	803	1 434	1 002	3 417	2 944	4 860	4 358
Taiwan	1 227	781	1 322	876	4 203	2 978	4 687	3 244
Thailand(a)	369	577	520	640	1 306	1 902	1 703	2 422
United States of America	2 217	5 697	2 738	5 836	7 984	20 893	9 577	23 003
Viet Nam(a)	102	443	107	460	349	972	385	1 726
Association of South East								
Asian Nations (ASEAN)	3 041	3 469	3 732	3 961	10 403	12 367	12 851	15 661
Brunei Darussalam(a)	10	81	10	47	49	11	40	211
Indonesia(a)	530	552	734	644	2 199	3 275	2 401	2 701
Laos	1	—	—	1	4	—	2	1
Malaysia(a)	507	897	566	1 043	1 859	2 845	2 138	3 768
Myanmar	5	4	5	3	13	12	17	17
Philippines(a)	325	112	355	121	1 207	405	1 304	457
Singapore(a)	1 194	803	1 434	1 002	3 417	2 944	4 860	4 358
Thailand(a)	369	577	520	640	1 306	1 902	1 703	2 422
Viet Nam(a)	102	443	107	460	349	972	385	1 726
European Union (EU)								
European Union (EU)	2 831	6 164	3 302	6 358	11 629	23 327	12 039	24 366
Austria	12	105	14	123	44	474	51	484
Belgium-Luxembourg	230	188	286	183	1 085	662	1 090	737
Denmark	83	137	17	134	77	459	140	542
Finland	74	169	145	172	191	601	371	668
France	214	598	217	529	914	2 202	871	2 245
Germany	294	1 411	348	1 508	1 409	6 082	1 246	5 792
Greece	22	25	57	27	55	101	102	97
Ireland	25	225	38	223	174	1 000	134	937
Italy	393	769	448	786	1 564	2 916	1 574	3 044
Netherlands	385	263	493	240	866	917	1 379	990
Portugal	8	43	8	43	54	141	41	168
Spain	191	164	219	151	562	653	714	660
Sweden	28	398	46	371	160	1 575	169	1 646
United Kingdom	872	1 671	967	1 867	4 473	5 545	4 156	6 356

(a) Also included in other country groups.

EXPORTS OF MAJOR COMMODITIES

Commodity description and SITC code	Jun Qtr 1999		Mar Qtr 2000		Jun Qtr 2000	
	\$m	%	\$m	%	\$m	%
Food and live animals(a)						
Sheep and goats, live (001.21,22)	46	0.2	51	0.2	45	0.2
Meat of bovine animals fresh, chilled or frozen (011.11-22)	729	3.6	686	2.9	881	3.3
Meat of sheep and goats fresh, chilled or frozen (012.11-13)	163	0.8	181	0.8	202	0.8
Milk and cream and milk products other than butter or cheese (022)	288	1.4	361	1.5	304	1.1
Cheese and curd (024)	186	0.9	203	0.9	216	0.8
Crustaceans, molluscs, and aquatic invertebrates (except canned or bottled) (036)	249	1.2	286	1.2	308	1.2
Wheat (including spelt) and meslin, unmilled (041)	759	3.7	948	4.0	898	3.4
Rice (042)(a)	112	0.6	110	0.5	84	0.3
Barley, unmilled (043)	147	0.7	216	0.9	121	0.5
Sorghum, unmilled (045.30)	1	—	—	—	—	—
Fruit and nuts, fresh, dried or preserved and fruit preparations (including fruit and vegetable juices) (057-059)(a)	169	0.8	170	0.7	176	0.7
Crude materials, inedible, except fuels(a)						
Hides and skins, bovine and equine, raw (211.11-13,20)(a)	46	0.2	56	0.2	74	0.3
Skins, sheep and lamb, with wool on, raw (211.60)	22	0.1	33	0.1	44	0.2
Wood, in chips or particles (246.11,15)	156	0.8	167	0.7	180	0.7
Cotton (other than linters), not carded or combed (263.10)	437	2.2	158	0.7	417	1.6
Wool, greasy (including fleece-washed wool) (268.11,19)	320	1.6	450	1.9	476	1.8
Wool, other, not carded or combed (268.21,29)	127	0.6	147	0.6	154	0.6
Iron ore concentrates and agglomerates (excluding roasted iron pyrites) (281.50, 60)	837	4.1	857	3.6	1 122	4.2
Copper ores and concentrates (283.10)	195	1.0	141	0.6	253	0.9
Nickel oxide sinters (284.22)	16	0.1	26	0.1	35	0.1
Alumina (aluminium oxide) (285.20)	665	3.3	908	3.8	987	3.7
Uranium and thorium ores and concentrates (286.10,20)	60	0.3	84	0.4	94	0.4
Zinc ores and concentrates (287.50)	199	1.0	170	0.7	215	0.8
Ores and concentrates of molybdenum, niobium, titanium etc. (287.81-85)(a)	129	0.6	70	0.3	97	0.4
Mineral fuels, lubricants and related materials						
Coal, whether or not pulverised but not agglomerated (321)	2 042	10.1	1 986	8.3	2 253	8.5
Petroleum oils and oils obtained from bituminous minerals, crude (333)	356	1.8	1 527	6.4	1 704	6.4
Petroleum products (334,335)	433	2.1	586	2.5	598	2.2
Gas, natural and manufactured (34)	377	1.9	723	3.0	781	2.9
Chemical and related products, n.e.s.(a)						
Plastics in primary and non-primary forms (57,58)(a)	106	0.5	88	0.4	105	0.4
Manufactured goods classified chiefly by material(a)						
Iron and steel (67)(a)	369	1.8	318	1.3	465	1.7
Copper and copper alloys, unwrought (excluding master alloys) (682.11,12,14)	148	0.7	218	0.9	246	0.9
Nickel and nickel alloys, unwrought (683.11,12)	153	0.8	315	1.3	391	1.5
Aluminium (684)	765	3.8	1 028	4.3	994	3.7
Lead and lead alloys, unwrought (685.11,12)	98	0.5	72	0.3	80	0.3
Zinc and zinc alloys, unwrought (686.11,12)	110	0.5	171	0.7	163	0.6
Machinery and transport equipment						
Power generating machinery and equipment (71)	166	0.8	204	0.9	233	0.9
Machinery specialised for particular industries (72)	283	1.4	261	1.1	299	1.1
Office machines and automatic data processing machines (75)	351	1.7	301	1.3	318	1.2
Cars and other road vehicles (including air-cushion vehicles) (78)	512	2.5	649	2.7	694	2.6
Aircraft and associated equipment; spacecraft (including satellites) and spacecraft launch vehicles; and parts thereof (792)	145	0.7	127	0.5	151	0.6
Miscellaneous manufactured articles						
Photographic and cinematographic supplies (882)	98	0.5	98	0.4	107	0.4
Commodities and transactions not classified elsewhere in the SITC						
Gold, non-monetary (excluding gold ores and concentrates) (971)	1 135	5.6	1 312	5.5	1 331	5.0
Total major commodities(a)	13 703	67.5	16 464	69.0	18 297	68.6
Total trade	20 293	100.0	23 871	100.0	26 656	100.0

(a) Excludes commodities subject to a confidentiality restriction.

See paragraph 30 of the Explanatory Notes.

Commodity description and SITC code	Jun Qtr 1999		Mar Qtr 2000		Jun Qtr 2000	
	\$m	%	\$m	%	\$m	%
Food and live animals						
Fish, crustaceans, molluscs and aquatic invertebrates, and preparations thereof (03)	175	0.7	196	0.7	177	0.6
Mineral fuels, lubricants and related materials						
Petroleum oils and oils obtained from bituminous minerals, crude (333)	1 027	4.3	1 215	4.6	1 862	6.5
Petroleum oils and oils obtained from bituminous minerals (other than crude) (334)	210	0.9	378	1.4	493	1.7
Chemical and related products, n.e.s.(a)						
Organic chemicals (51)(a)	575	2.4	807	3.1	718	2.5
Inorganic chemicals (52)(a)	184	0.8	181	0.7	194	0.7
Medical and pharmaceutical products (54)	792	3.4	899	3.4	943	3.3
Plastics in primary and non-primary forms (57, 58)(a)	442	1.9	494	1.9	504	1.7
Chemical materials and products, n.e.s. (59)	328	1.4	301	1.1	306	1.1
Manufactured goods classified chiefly by material(a)						
Rubber tyres, interchangeable tyre treads, tyre flaps and inner tubes for wheels of all kinds (625)	208	0.9	208	0.8	208	0.7
Paper, paperboard and articles of paper pulp, of paper or of paperboard (64)(a)	476	2.0	561	2.1	568	2.0
Textile yarn (651)	140	0.6	141	0.5	148	0.5
Woven fabrics of cotton or man-made textile material (excluding narrow or special fabrics) (652, 653)	162	0.7	153	0.6	158	0.5
Clay and refractory construction materials and mineral manufactures, n.e.s. (662, 663)	142	0.6	145	0.6	162	0.6
Glass, glassware and pottery (664, 665, 666)	140	0.6	151	0.6	158	0.5
Iron and steel (67)(a)	346	1.5	406	1.5	380	1.3
Manufactures of base metals n.e.s. (699)	221	0.9	235	0.9	250	0.9
Machinery and transport equipment						
Internal combustion piston engines, and parts thereof n.e.s (713)	253	1.1	301	1.1	305	1.1
Tractors, track-laying and wheeled (722)	98	0.4	121	0.5	119	0.4
Civil engineering and contractors' plant and equipment (723)	265	1.1	253	1.0	264	0.9
Machinery and equipment specialised for particular industries and parts thereof (728)	195	0.8	220	0.8	258	0.9
Pumps, centrifuges, filtering or purifying apparatus and parts thereof (743)	240	1.0	229	0.9	238	0.8
Automatic data processing machines and units thereof (752)	1 277	5.4	1 141	4.3	1 478	5.1
Parts and accessories for office and automatic data processing machines (759)	571	2.4	548	2.1	653	2.3
Television and radio broadcast receivers (761, 762)	229	1.0	236	0.9	272	0.9
Telecommunication equipment n.e.s. and parts n.e.s. and accessories (764)	1 180	5.0	1 357	5.1	1 506	5.2
Electrical apparatus for switching or protecting electrical circuits (772)	235	1.0	235	0.9	271	0.9
Household type, electrical and non-electrical equipment n.e.s. (775)	235	1.0	257	1.0	269	0.9
Electrical machinery and apparatus n.e.s. (778)	356	1.5	361	1.4	420	1.5
Passenger motor vehicles (other than public transport type vehicles) including station wagons and racing cars (781)	1 661	7.0	1 547	5.9	1 897	6.6
Motor vehicles for the transport of goods (782.11,19)	575	2.4	538	2.0	672	2.3
Parts and accessories of motor vehicles and tractors, track-laying and wheeled (784)	558	2.4	559	2.1	652	2.3
Aircraft and associated equipment; spacecraft (including satellites) and spacecraft launch vehicles; and parts thereof (792)	478	2.0	1 108	4.2	1 020	3.5
Ships, boats (including hovercraft) and floating structures (793)	161	0.7	34	0.1	36	0.1
Miscellaneous manufactured articles(a)						
Articles of apparel and clothing accessories (84)	517	2.2	815	3.1	626	2.2
Measuring, checking, analysing and controlling instruments and apparatus n.e.s. (874)	399	1.7	408	1.5	442	1.5
Photographic and cinematographic supplies (882)(a)	141	0.6	130	0.5	140	0.5
Printed matter (892)	224	0.9	233	0.9	252	0.9
Baby carriages, toys, games and sporting goods (894)	208	0.9	223	0.8	242	0.8
Total major commodities(a)	15 623	66.1	17 327	65.6	19 265	66.9
Total trade	23 619	100.0	26 423	100.0	28 803	100.0

(a) Excludes commodities subject to a confidentiality restriction.
See paragraph 28 of the Explanatory Notes.

EXPORTS AND IMPORTS, By Commodity—quarterly

Section and Division of the SITC Rev3	JUN QTR 1999		MAR QTR 2000		JUN QTR 2000	
	<i>Exports</i>	<i>Imports</i>	<i>Exports</i>	<i>Imports</i>	<i>Exports</i>	<i>Imports</i>
	\$m	\$m	\$m	\$m	\$m	\$m
0 Food and live animals(a)	3 807	883	4 219	1 005	4 392	929
00 Live animals other than fish, crustaceans, molluscs and aquatic invertebrates	157	32	182	43	174	34
01 Meat and meat preparations	997	22	987	53	1 236	46
02 Dairy products and birds' eggs	535	69	625	64	588	70
03 Fish (not marine mammals), crustaceans, molluscs and aquatic invertebrates, and preparations thereof(a)	348	175	357	196	433	177
04 Cereals and cereal preparations(a)	1 151	57	1 396	59	1 231	63
05 Vegetables and fruit(a)	293	172	331	181	336	172
06 Sugars, sugar preparations and honey(a)	35	22	38	25	40	23
07 Coffee, tea, cocoa, spices and manufactures thereof	43	151	56	155	53	137
08 Feeding stuff for animals (excluding unmilled cereals)(a)	162	33	169	44	192	33
09 Miscellaneous edible products and preparations	87	150	77	185	108	173
1 Beverages and tobacco	335	140	350	157	437	163
11 Beverages	321	95	338	123	421	119
12 Tobacco and tobacco manufactures	14	45	12	34	16	44
2 Crude materials, inedible, except fuels(a)(b)	4 041	373	4 380	455	5 323	519
21 Hides, skins and furskins, raw(a)	73	1	98	1	128	1
22 Oil seeds and oleaginous fruits	166	11	360	16	180	19
23 Crude rubber (including synthetic and reclaimed)	2	26	3	27	3	29
24 Cork and wood	186	114	196	159	221	198
25 Pulp and waste paper	7	38	11	51	13	81
26 Textile fibres and their wastes (not manufactured into yarn or fabric)(a)	1 006	35	899	41	1 198	37
27 Crude fertilisers (excluding those of Division 56) and crude minerals (excluding coal, petroleum and precious stones)(a)(b)	93	29	100	43	111	39
28 Metalliferous ores and metal scrap(a)	2 445	46	2 650	41	3 396	47
29 Crude animal and vegetable materials, n.e.s.	63	74	62	76	73	69
3 Mineral fuels, lubricants and related materials(b)	3 213	1 305	4 826	1 672	5 341	2 453
32 Coal, coke and briquettes	2 046	5	1 990	4	2 258	2
33 Petroleum, petroleum products and related materials(b)	790	1 287	2 113	1 650	2 302	2 412
34 Gas, natural and manufactured	377	12	723	18	781	39
4 Animal and vegetable oils, fats and waxes(a)	78	81	77	68	77	72
41 Animal oils and fats	52	2	52	2	53	2
42 Fixed vegetable fats and oils, crude, refined or fractionated(a)	13	71	13	58	13	60
43 Fats and oils (processed), waxes and inedible mixtures or preparations, of animal or vegetable origin, n.e.s.	13	8	12	8	12	9
5 Chemical and related products, n.e.s.(a)(b)	970	2 851	1 000	3 260	1 160	3 246
51 Organic chemicals(a)(b)	52	575	22	807	38	718
52 Inorganic chemicals(a)(b)	75	184	110	181	118	194
53 Dyeing, tanning and colouring materials	137	119	126	129	163	128
54 Medicinal and pharmaceutical products(a)	386	792	428	899	490	943
55 Essential oils and resinoids and perfume materials: toilet, polishing and cleansing preparations	84	196	79	208	88	216
56 Fertilisers (excluding crude)	7	215	11	241	17	236
57 Plastics in primary forms(a)(b)	65	236	46	268	51	268
58 Plastics in non-primary forms	40	206	42	227	53	236
59 Chemical materials and products, n.e.s.	125	328	137	301	141	306

Section and Division of the SITC Rev3	JUN QTR 1999		MAR QTR 2000		JUN QTR 2000	
	Exports	Imports	Exports	Imports	Exports	Imports
	\$m	\$m	\$m	\$m	\$m	\$m
6 Manufactured goods classified chiefly by material(a)(b)	2 558	3 006	3 107	3 359	3 448	3 498
61 Leather, leather manufactures, and dressed furskins, n.e.s.	85	43	102	42	121	40
62 Rubber manufactures, n.e.s.(b)	51	315	37	313	41	322
63 Cork and wood manufactures (excluding furniture)(a)	36	117	32	165	40	143
64 Paper, paperboard, and articles of paper pulp, of paper or of paperboard(a)	116	476	146	561	153	568
65 Textile yarn, fabrics, made-up articles, n.e.s., and related products	158	606	126	614	154	652
66 Non-metallic mineral manufactures, n.e.s.(a)	173	378	218	462	209	533
67 Iron and steel(a)(b)	369	346	318	406	465	380
68 Non-ferrous metals(b)	1 401	180	1 982	188	2 102	219
69 Manufactures of metals, n.e.s.(b)	169	547	147	609	163	641
7 Machinery and transport equipment(a)(b)	2 579	11 428	2 548	12 112	2 932	13 573
71 Power generating machinery and equipment	166	605	204	701	233	690
72 Machinery specialised for particular industries	283	932	261	932	299	1 054
73 Metal working machinery	52	99	62	104	73	127
74 General industrial machinery and equipment, n.e.s. and machine parts, n.e.s.(a)	250	1 213	230	1 348	271	1 290
75 Office machines and automatic data processing machines	351	1 953	301	1 795	318	2 235
76 Telecommunications and sound recording and reproducing apparatus and equipment	183	1 495	263	1 675	337	1 887
77 Electrical machinery, apparatus, appliances, parts (including non-electrical counterparts of electrical domestic equipment)(a)(b)	327	1 429	276	1 473	346	1 723
78 Road vehicles (including air-cushion vehicles)	512	3 016	649	2 930	694	3 495
79 Transport equipment (excluding road vehicles)	456	686	300	1 155	359	1 072
8 Miscellaneous manufactured articles(a)(b)	884	3 202	924	3 754	972	3 760
81 Prefabricated buildings; sanitary, plumbing, heating and lighting fixtures and fittings, n.e.s.	20	80	18	92	19	110
82 Furniture, parts thereof; bedding, mattresses, mattress supports, cushions and similar stuffed furnishings	32	189	25	213	28	247
83 Travel goods, handbags and similar containers	3	70	4	90	4	89
84 Articles of apparel and clothing accessories	83	517	71	815	93	626
85 Footwear(a)	15	135	12	226	16	165
87 Professional, scientific and controlling instruments and apparatus, n.e.s.	244	614	250	623	267	697
88 Photographic apparatus, equipment and supplies and optical goods, n.e.s.; watches and clocks(b)	161	331	249	328	233	392
89 Miscellaneous manufactured articles, n.e.s.	325	1 265	296	1 367	313	1 434
9 Commodities and transactions n.e.c. in the SITC(c)(d)	1 827	349	2 441	583	2 574	590
93 Special transactions and commodities not classified according to kind	274	7	459	12	511	12
95 Gold coin whether or not legal tender, and other coin being legal tender	14	1	19	2	16	1
96 Coin (excluding gold coin), not being legal tender	2	—	4	1	2	—
97 Gold, non-monetary (excluding gold ores and concentrates)	1 135	304	1 312	538	1 331	539
98 Combined confidential items of trade and commodities n.e.s.(c)(d)	402	38	648	29	713	38
Total trade	20 293	23 619	23 871	26 423	26 656	28 803

(a) Excludes export commodities subject to a confidentiality restriction. These are included in Division 98. See paragraph 28 of the Explanatory Notes.

(c) Includes export and import commodities subject to a confidentiality restriction. See paragraph 28 of the Explanatory Notes.

(b) Excludes import commodities subject to a confidentiality restriction. These are included in Division 98. See paragraph 28 of the Explanatory Notes.

(d) Includes small value export entries to the value of \$45 million for June 2000 which cannot yet be allocated by commodity.

Section and Division of the SITC Rev3	12 MONTHS ENDED JUN 1999		12 MONTHS ENDED JUN 2000	
	<i>Exports</i>	<i>Imports</i>	<i>Exports</i>	<i>Imports</i>
	\$m	\$m	\$m	\$m
0 Food and live animals(a)	15 503	3 760	16 802	3 955
00 Live animals other than fish, crustaceans, molluscs and aquatic invertebrates	615	122	733	128
01 Meat and meat preparations	4 007	73	4 459	155
02 Dairy products and birds' eggs	2 226	263	2 382	268
03 Fish (not marine mammals), crustaceans, molluscs and aquatic invertebrates, and preparations thereof(a)	1 221	745	1 536	781
04 Cereals and cereal preparations(a)	5 001	244	4 939	266
05 Vegetables and fruit(a)	1 142	715	1 304	737
06 Sugars, sugar preparations and honey(a)	184	106	173	110
07 Coffee, tea, cocoa, spices and manufactures thereof	190	661	232	610
08 Feeding stuff for animals (excluding unmilled cereals)(a)	598	146	676	152
09 Miscellaneous edible products and preparations	318	685	367	749
1 Beverages and tobacco	1 240	622	1 570	707
11 Beverages	1 176	453	1 513	542
12 Tobacco and tobacco manufactures	64	169	57	165
2 Crude materials, inedible, except fuels(a)(b)	17 173	1 611	18 369	1 848
21 Hides, skins and furskins, raw(a)	393	2	413	3
22 Oil seeds and oleaginous fruits	700	62	809	81
23 Crude rubber (including synthetic and reclaimed)	9	110	13	108
24 Cork and wood	686	477	778	618
25 Pulp and waste paper	26	202	42	232
26 Textile fibres and their wastes (not manufactured into yarn or fabric)(a)	4 076	135	4 293	151
27 Crude fertilisers (excluding those of Division 56) and crude minerals (excluding coal, petroleum and precious stones)(a)(b)	416	179	441	170
28 Metalliferous ores and metal scrap(a)	10 614	174	11 308	203
29 Crude animal and vegetable materials, n.e.s.	253	271	271	283
3 Mineral fuels, lubricants and related materials(b)	14 146	4 621	18 066	7 680
32 Coal, coke and briquettes	9 288	25	8 347	20
33 Petroleum, petroleum products and related materials(b)	3 131	4 526	7 129	7 543
34 Gas, natural and manufactured	1 727	70	2 590	117
4 Animal and vegetable oils, fats and waxes(a)	379	296	302	277
41 Animal oils and fats(a)	257	8	212	8
42 Fixed vegetable fats and oils, crude, refined or fractionated(a)	70	261	43	232
43 Fats and oils (processed), waxes and inedible mixtures or preparations, of animal or vegetable origin, n.e.s.	52	27	47	36
5 Chemical and related products, n.e.s.(a)(b)	3 585	11 435	4 193	12 498
51 Organic chemicals(a)(b)	168	2 388	128	2 874
52 Inorganic chemicals(a)(b)	315	752	453	682
53 Dyeing, tanning and colouring materials	522	483	550	518
54 Medicinal and pharmaceutical products(a)	1 333	3 041	1 714	3 520
55 Essential oils and resinoids and perfume materials: toilet, polishing and cleansing preparations	301	850	343	915
56 Fertilisers (excluding crude)	34	785	45	717
57 Plastics in primary forms(a)(b)	243	992	210	1 093
58 Plastics in non-primary forms	168	895	192	937
59 Chemical materials and products, n.e.s.	502	1 249	558	1 241

Section and Division of the SITC Rev3	12 MONTHS ENDED JUN 1999		12 MONTHS ENDED JUN 2000	
	<i>Exports</i>	<i>Imports</i>	<i>Exports</i>	<i>Imports</i>
	\$m	\$m	\$m	\$m
6 Manufactured goods classified chiefly by material(a)(b)	10 173	12 855	12 313	13 692
61 Leather, leather manufactures, and dressed furskins, n.e.s.	450	148	460	160
62 Rubber manufactures, n.e.s.(b)	177	1 272	169	1 256
63 Cork and wood manufactures (excluding furniture)(a)	124	456	138	567
64 Paper, paperboard, and articles of paper pulp, of paper or of paperboard(b)	429	2 082	542	2 330
65 Textile yarn, fabrics, made-up articles, n.e.s., and related products	603	2 588	598	2 633
66 Non-metallic mineral manufactures, n.e.s.(a)	735	1 579	965	1 915
67 Iron and steel(a)(b)	1 542	1 472	1 407	1 505
68 Non-ferrous metals(b)	5 444	850	7 398	804
69 Manufactures of metals, n.e.s.(b)	670	2 408	636	2 523
7 Machinery and transport equipment(a)(b)	10 286	45 418	11 606	51 349
71 Power generating machinery and equipment	714	2 264	920	2 659
72 Machinery specialised for particular industries	1 382	4 234	1 109	4 155
73 Metal working machinery	191	497	243	445
74 General industrial machinery and equipment, n.e.s. and machine parts, n.e.s.(a)	1 032	5 770	1 038	5 399
75 Office machines and automatic data processing machines	1 459	7 104	1 312	7 590
76 Telecommunications and sound recording and reproducing apparatus and equipment	741	4 926	1 180	6 808
77 Electrical machinery, apparatus, appliances, parts (including non-electrical counterparts of electrical domestic equipment)(a)(b)	1 273	5 870	1 321	6 234
78 Road vehicles (including air-cushion vehicles)	2 091	11 904	2 811	12 784
79 Transport equipment (excluding road vehicles)	1 403	2 848	1 672	5 276
8 Miscellaneous manufactured articles(a)(b)	3 510	14 463	3 829	15 512
81 Prefabricated buildings; sanitary, plumbing, heating and lighting fixtures and fittings, n.e.s.	80	310	77	380
82 Furniture, parts thereof; bedding, mattresses, mattress supports, cushions and similar stuffed furnishings	110	797	123	1 003
83 Travel goods, handbags and similar containers	13	366	13	410
84 Articles of apparel and clothing accessories	352	2 459	340	2 795
85 Footwear(a)	65	780	64	848
87 Professional, scientific and controlling instruments and apparatus, n.e.s.	931	2 533	1 066	2 593
88 Photographic apparatus, equipment and supplies and optical goods, n.e.s.; watches and clocks(b)	708	1 418	926	1 519
89 Miscellaneous manufactured articles, n.e.s.	1 250	5 801	1 218	5 964
9 Commodities and transactions n.e.c. in the SITC(c)(d)	9 996	2 531	10 206	2 566
93 Special transactions and commodities not classified according to kind	1 073	39	2 189	42
95 Gold coin whether or not legal tender, and other coin being legal tender	115	6	89	8
96 Coin (excluding gold coin), not being legal tender	5	—	9	7
97 Gold, non-monetary (excluding gold ores and concentrates)	6 335	2 351	5 090	2 397
98 Combined confidential items of trade and commodities n.e.s.(c)(d)	2 467	134	2 829	112
Total trade	85 992	97 611	97 255	110 083

(a) Excludes export commodities subject to a confidentiality restriction. These are included in Division 98. See paragraph 28 of the Explanatory Notes.

(c) Includes export and import commodities subject to a confidentiality restriction. See paragraph 28 of the Explanatory Notes.

(b) Excludes import commodities subject to a confidentiality restriction. These are included in Division 98. See paragraph 28 of the Explanatory Notes.

(d) Includes small value export entries to the value of \$45 million for June 2000 which cannot yet be allocated by commodity.

Section and Division of the SITC Rev3	JUN QTR 2000		12 MONTHS ENDED JUN 1999		12 MONTHS ENDED JUN 2000	
	Exports	Imports	Exports	Imports	Exports	Imports
	\$m	\$m	\$m	\$m	\$m	\$m
0 Food and live animals(a)	39	30	432	103	147	125
00 Live animals other than fish, crustaceans, molluscs and aquatic invertebrates	2	—	8	—	11	—
01 Meat and meat preparations	9	—	33	—	32	—
02 Dairy products and birds' eggs	10	—	16	—	30	—
03 Fish (not marine mammals), crustaceans, molluscs and aquatic invertebrates, and preparations thereof(a)	11	4	102	13	41	14
04 Cereals and cereal preparations(a)	—	5	254	11	—	15
05 Vegetables and fruit(a)	3	16	5	52	9	63
06 Sugars, sugar preparations and honey(a)	—	1	4	2	10	4
07 Coffee, tea, cocoa, spices and manufactures thereof	—	1	2	5	2	4
08 Feeding stuff for animals (excluding unmilled cereals)(a)	3	—	6	1	8	3
09 Miscellaneous edible products and preparations(a)	1	4	3	19	4	21
1 Beverages and tobacco(a)	—	5	2	18	2	15
11 Beverages	—	—	2	1	2	1
12 Tobacco and tobacco manufactures(a)	—	5	—	17	—	15
2 Crude materials, inedible, except fuels(a)(b)	725	12	1 831	35	2 514	45
21 Hides, skins and furskins, raw(a)	23	—	54	—	82	—
22 Oil seeds and oleaginous fruits	63	2	164	8	406	10
23 Crude rubber (including synthetic and reclaimed)(b)	—	—	—	—	1	—
24 Cork and wood	1	—	1	1	7	1
25 Pulp and waste paper	1	—	1	—	2	—
26 Textile fibres and their wastes (not manufactured into yarn or fabric)(a)	229	—	603	1	866	1
27 Crude fertilisers (excluding those of Division 56) and crude minerals (excluding coal, petroleum and precious stones)(a)(b)	1	3	2	8	3	13
28 Metalliferous ores and metal scrap(a)	397	1	997	2	1 114	2
29 Crude animal and vegetable materials, n.e.s.	11	6	9	15	35	18
3 Mineral fuels, lubricants and related materials(a)(b)	217	81	371	61	699	146
32 Coal, coke and briquettes	49	—	161	5	129	7
33 Petroleum, petroleum products and related materials(b)	124	81	113	56	442	138
34 Gas, natural and manufactured(a)	44	—	97	—	128	—
4 Animal and vegetable oils, fats and waxes(a)(b)	21	1	44	5	71	3
41 Animal oils and fats(a)	20	—	36	—	67	—
42 Fixed vegetable fats and oils, crude, refined or fractionated(a)(b)	—	—	5	4	—	2
43 Fats and oils (processed), waxes and inedible mixtures or preparations, of animal or vegetable origin, n.e.s.	1	—	3	1	4	1
5 Chemical and related products, n.e.s.(a)(b)	47	74	101	235	159	276
51 Organic chemicals(a)(b)	—	20	3	78	1	85
52 Inorganic chemicals(a)(b)	3	15	13	47	13	62
53 Dyeing, tanning and colouring materials(b)	25	5	44	15	70	18
54 Medicinal and pharmaceutical products(a)	6	11	12	31	22	32
55 Essential oils and resinoids and perfume materials: toilet, polishing and cleansing preparations(b)	1	6	4	14	5	18
56 Fertilisers (excluding crude)	—	1	—	4	—	2
57 Plastics in primary forms(a)(b)	3	2	9	3	11	6
58 Plastics in non-primary forms(b)	7	5	6	16	25	22
59 Chemical materials and products, n.e.s.(a)(b)	2	9	10	26	12	31

Section and Division of the SITC Rev3	JUN QTR 2000		12 MONTHS ENDED JUN 1999		12 MONTHS ENDED JUN 2000	
	Exports	Imports	Exports	Imports	Exports	Imports
	\$m	\$m	\$m	\$m	\$m	\$m
6 Manufactured goods classified chiefly by material(a)(b)	115	343	257	977	317	1 236
61 Leather, leather manufactures, and dressed furskins, n.e.s.(a)	5	1	11	4	18	6
62 Rubber manufactures, n.e.s.(b)	—	21	1	41	1	70
63 Cork and wood manufactures (excluding furniture)(a)	3	9	5	32	10	35
64 Paper, paperboard, and articles of paper pulp, of paper or of paperboard(b)	14	18	38	45	33	68
65 Textile yarn, fabrics, made-up articles, n.e.s., and related products(a)(b)	7	109	14	333	21	405
66 Non-metallic mineral manufactures, n.e.s.(a)	1	52	3	153	3	187
67 Iron and steel(a)(b)	14	7	44	39	38	26
68 Non-ferrous metals(a)(b)	69	33	127	53	179	90
69 Manufactures of metals, n.e.s.(a)(b)	3	93	15	277	13	350
7 Machinery and transport equipment(a)(b)	61	488	196	1 444	166	1 821
71 Power generating machinery and equipment	4	13	6	31	11	34
72 Machinery specialised for particular industries(a)	15	12	37	24	45	33
73 Metal working machinery	1	6	5	15	3	18
74 General industrial machinery and equipment, n.e.s. and machine parts, n.e.s.(a)(b)	12	32	36	150	31	167
75 Office machines and automatic data processing machines	6	157	11	335	16	497
76 Telecommunications and sound recording and reproducing apparatus and equipment(a)	6	88	34	372	21	381
77 Electrical machinery, apparatus, appliances, parts (including non-electrical counterparts of electrical domestic equipment)(a)(b)	5	147	52	431	18	534
78 Road vehicles (including air-cushion vehicles)	1	25	13	84	9	125
79 Transport equipment (excluding road vehicles)	10	8	3	3	13	31
8 Miscellaneous manufactured articles(a)(b)	19	831	76	3 185	63	3 798
81 Prefabricated buildings; sanitary, plumbing, heating and lighting fixtures and fittings, n.e.s.	—	27	1	81	1	107
82 Furniture, parts thereof; bedding, mattresses, mattress supports, cushions and similar stuffed furnishings	1	43	2	112	2	174
83 Travel goods, handbags and similar containers	—	48	—	210	—	235
84 Articles of apparel and clothing accessories	—	370	16	1 411	2	1 702
85 Footwear(a)	—	89	1	387	—	452
87 Professional, scientific and controlling instruments and apparatus, n.e.s.	8	10	23	34	27	38
88 Photographic apparatus, equipment and supplies and optical goods, n.e.s.; watches and clocks(b)	4	24	21	91	14	116
89 Miscellaneous manufactured articles, n.e.s.(b)	6	220	12	859	17	974
9 Commodities and transactions n.e.c. in the SITC(c)	242	18	637	41	823	54
93 Special transactions and commodities not classified according to kind	3	—	7	—	12	—
95 Gold coin whether or not legal tender, and other coin being legal tender	—	—	—	—	—	—
96 Coin (excluding gold coin), not being legal tender	—	—	—	—	—	—
97 Gold, non-monetary (excluding gold ores and concentrates)	—	1	83	—	—	2
98 Combined confidential items of trade and commodities n.e.s.(c)	239	18	546	41	811	53
Total trade	1 485	1 884	3 948	6 106	4 959	7 520

(a) Excludes export commodities subject to a confidentiality restriction. These are included in Division 98. See paragraph 28 of the Explanatory Notes.

(b) Excludes import commodities subject to a confidentiality restriction. These are included in Division 98. See paragraph 28 of the Explanatory Notes.

(c) Includes export and import commodities subject to a confidentiality restriction. See paragraph 28 of the Explanatory Notes.

Section and Division of the SITC Rev3	JUN QTR 2000		12 MONTHS ENDED JUN 1999		12 MONTHS ENDED JUN 2000	
	Exports	Imports	Exports	Imports	Exports	Imports
	\$m	\$m	\$m	\$m	\$m	\$m
0 Food and live animals(a)	17	9	65	42	68	40
00 Live animals other than fish, crustaceans, molluscs and aquatic invertebrates	—	—	—	—	—	—
01 Meat and meat preparations	6	—	24	—	22	—
02 Dairy products and birds' eggs	2	1	6	5	11	4
03 Fish (not marine mammals), crustaceans, molluscs and aquatic invertebrates, and preparations thereof(a)	—	1	2	5	2	4
04 Cereals and cereal preparations(a)	—	1	1	4	1	5
05 Vegetables and fruit(a)	7	1	24	2	24	2
06 Sugars, sugar preparations and honey(a)	1	1	5	7	5	6
07 Coffee, tea, cocoa, spices and manufactures thereof	—	2	1	11	1	11
08 Feeding stuff for animals (excluding unmilled cereals)(a)	—	—	—	1	—	2
09 Miscellaneous edible products and preparations(a)	—	2	1	5	2	7
1 Beverages and tobacco(a)	16	1	34	5	59	5
11 Beverages	16	1	32	5	59	5
12 Tobacco and tobacco manufactures(a)	—	—	2	—	—	—
2 Crude materials, inedible, except fuels(a)(b)	102	9	457	23	316	29
21 Hides, skins and furskins, raw(a)	—	—	2	—	1	—
22 Oil seeds and oleaginous fruits	1	—	71	—	1	—
23 Crude rubber (including synthetic and reclaimed)(b)	—	2	—	5	—	7
24 Cork and wood	—	2	1	2	1	4
25 Pulp and waste paper	—	—	—	1	—	2
26 Textile fibres and their wastes (not manufactured into yarn or fabric)(a)	45	2	155	6	105	7
27 Crude fertilisers (excluding those of Division 56) and crude minerals (excluding coal, petroleum and precious stones)(a)(b)	2	—	13	1	7	2
28 Metalliferous ores and metal scrap(a)	48	—	200	1	184	1
29 Crude animal and vegetable materials, n.e.s.	5	2	16	6	16	7
3 Mineral fuels, lubricants and related materials(a)(b)	47	1	139	6	120	4
32 Coal, coke and briquettes	47	—	139	1	120	1
33 Petroleum, petroleum products and related materials(b)	—	1	—	5	—	3
34 Gas, natural and manufactured(a)	—	—	—	—	—	—
4 Animal and vegetable oils, fats and waxes(a)(b)	—	2	1	3	2	9
41 Animal oils and fats(a)	—	—	—	1	—	—
42 Fixed vegetable fats and oils, crude, refined or fractionated(a)(b)	—	—	—	—	1	—
43 Fats and oils (processed), waxes and inedible mixtures or preparations, of animal or vegetable origin, n.e.s.	—	2	—	2	—	9
5 Chemical and related products, n.e.s.(a)(b)	7	275	42	973	37	1 035
51 Organic chemicals(a)(b)	3	53	9	124	8	148
52 Inorganic chemicals(a)(b)	—	8	2	31	—	33
53 Dyeing, tanning and colouring materials(b)	1	18	2	70	1	69
54 Medicinal and pharmaceutical products(a)	2	116	18	420	20	458
55 Essential oils and resinoids and perfume materials: toilet, polishing and cleansing preparations(b)	—	12	5	50	3	52
56 Fertilisers (excluding crude)	—	7	—	26	—	27
57 Plastics in primary forms(a)(b)	—	18	—	74	—	74
58 Plastics in non-primary forms(b)	—	18	1	59	—	60
59 Chemical materials and products, n.e.s.(a)(b)	1	24	6	119	5	114

Section and Division of the SITC Rev3	JUN QTR 2000		12 MONTHS ENDED JUN 1999		12 MONTHS ENDED JUN 2000	
	Exports	Imports	Exports	Imports	Exports	Imports
	\$m	\$m	\$m	\$m	\$m	\$m
6 Manufactured goods classified chiefly by material(a)(b)	18	184	56	723	87	730
61 Leather, leather manufactures, and dressed furskins, n.e.s.(a)(b)	2	1	3	3	4	2
62 Rubber manufactures, n.e.s.(b)	—	14	1	71	—	60
63 Cork and wood manufactures (excluding furniture)(a)	—	2	1	9	1	11
64 Paper, paperboard, and articles of paper pulp, of paper or of paperboard(b)	—	46	1	158	1	183
65 Textile yarn, fabrics, made-up articles, n.e.s., and related products(a)(b)	—	26	5	69	3	89
66 Non-metallic mineral manufactures, n.e.s.(a)	3	16	9	72	12	66
67 Iron and steel(a)(b)	—	13	1	74	1	57
68 Non-ferrous metals(a)(b)	12	20	29	80	60	79
69 Manufactures of metals, n.e.s.(a)(b)	1	46	5	187	6	183
7 Machinery and transport equipment(a)(b)	98	836	410	3 618	388	3 240
71 Power generating machinery and equipment	4	66	22	273	28	221
72 Machinery specialised for particular industries(a)(b)	3	143	20	619	19	521
73 Metal working machinery	2	11	15	51	10	54
74 General industrial machinery and equipment, n.e.s. and machine parts, n.e.s.(a)(b)	6	127	19	662	21	529
75 Office machines and automatic data processing machines	5	14	49	64	39	58
76 Telecommunications and sound recording and reproducing apparatus and equipment(a)(b)	11	34	17	133	31	183
77 Electrical machinery, apparatus, appliances, parts (including non-electrical counterparts of electrical domestic equipment)(a)(b)	53	117	170	456	199	450
78 Road vehicles (including air-cushion vehicles)	3	313	34	1 341	28	1 181
79 Transport equipment (excluding road vehicles)	11	11	64	17	12	43
8 Miscellaneous manufactured articles(a)(b)	24	140	94	531	106	539
81 Prefabricated buildings; sanitary, plumbing, heating and lighting fixtures and fittings, n.e.s.	—	6	1	19	1	20
82 Furniture, parts thereof; bedding, mattresses, mattress supports, cushions and similar stuffed furnishings	—	6	1	22	—	31
83 Travel goods, handbags and similar containers	—	—	—	1	—	1
84 Articles of apparel and clothing accessories	1	4	6	15	5	14
85 Footwear(a)	—	2	1	9	—	10
87 Professional, scientific and controlling instruments and apparatus, n.e.s.	15	63	56	242	61	227
88 Photographic apparatus, equipment and supplies and optical goods, n.e.s.; watches and clocks(b)	1	18	6	66	2	65
89 Miscellaneous manufactured articles, n.e.s.(b)	7	42	25	157	36	170
9 Commodities and transactions n.e.c. in the SITC(c)	17	50	111	158	63	160
93 Special transactions and commodities not classified according to kind	2	2	5	4	6	4
95 Gold coin whether or not legal tender, and other coin being legal tender	2	—	34	—	13	—
96 Coin (excluding gold coin), not being legal tender	—	—	1	—	1	—
97 Gold, non-monetary (excluding gold ores and concentrates)	—	1	—	1	—	2
98 Combined confidential items of trade and commodities n.e.s.(c)	13	47	70	153	43	153
Total trade	348	1 508	1 409	6 082	1 246	5 792

(a) Excludes export commodities subject to a confidentiality restriction. These are included in Division 98. See paragraph 28 of the Explanatory Notes.

(c) Includes export and import commodities subject to a confidentiality restriction. See paragraph 28 of the Explanatory Notes.

(b) Excludes import commodities subject to a confidentiality restriction. These are included in Division 98. See paragraph 28 of the Explanatory Notes.

Section and Division of the SITC Rev3	JUN QTR 2000		12 MONTHS ENDED JUN 1999		12 MONTHS ENDED JUN 2000	
	<i>Exports</i>	<i>Imports</i>	<i>Exports</i>	<i>Imports</i>	<i>Exports</i>	<i>Imports</i>
	\$m	\$m	\$m	\$m	\$m	\$m
0 Food and live animals(a)	958	18	3 193	46	3 553	53
00 Live animals other than fish, crustaceans, molluscs and aquatic invertebrates	2	—	12	1	13	1
01 Meat and meat preparations	460	—	1 493	1	1 681	1
02 Dairy products and birds' eggs	114	—	385	—	426	—
03 Fish (not marine mammals), crustaceans, molluscs and aquatic invertebrates, and preparations thereof(a)	184	9	447	19	655	20
04 Cereals and cereal preparations(a)	29	1	272	3	99	4
05 Vegetables and fruit(a)	25	—	139	2	158	2
06 Sugars, sugar preparations and honey(a)	5	—	23	1	27	1
07 Coffee, tea, cocoa, spices and manufactures thereof	12	1	31	3	56	5
08 Feeding stuff for animals (excluding unmilled cereals)(a)	118	1	340	3	398	4
09 Miscellaneous edible products and preparations(a)	8	4	51	14	40	16
1 Beverages and tobacco(a)	19	1	38	3	52	3
11 Beverages	19	1	38	2	52	2
12 Tobacco and tobacco manufactures(a)	—	—	—	1	—	1
2 Crude materials, inedible, except fuels(a)(b)	910	11	3 757	52	3 560	48
21 Hides, skins and furskins, raw(a)	3	—	15	—	10	—
22 Oil seeds and oleaginous fruits	46	—	174	—	169	—
23 Crude rubber (including synthetic and reclaimed)(b)	—	2	—	12	—	8
24 Cork and wood(a)	126	—	577	—	576	—
25 Pulp and waste paper	—	—	—	—	1	—
26 Textile fibres and their wastes (not manufactured into yarn or fabric)(a)	77	3	472	7	393	12
27 Crude fertilisers (excluding those of Division 56) and crude minerals (excluding coal, petroleum and precious stones)(a)(b)	7	2	25	17	39	13
28 Metalliferous ores and metal scrap(a)	638	1	2 447	6	2 322	5
29 Crude animal and vegetable materials, n.e.s.	12	3	47	10	50	9
3 Mineral fuels, lubricants and related materials(a)(b)	1 346	23	4 512	21	5 162	43
32 Coal, coke and briquettes	970	—	3 938	1	3 815	2
33 Petroleum, petroleum products and related materials(b)	273	23	438	20	922	41
34 Gas, natural and manufactured(a)	103	—	136	—	425	—
4 Animal and vegetable oils, fats and waxes(a)(b)	10	—	23	—	33	1
41 Animal oils and fats(a)	2	—	5	—	8	—
42 Fixed vegetable fats and oils, crude, refined or fractionated(a)(b)	5	—	5	—	13	—
43 Fats and oils (processed), waxes and inedible mixtures or preparations, of animal or vegetable origin, n.e.s.	3	—	14	—	12	—
5 Chemical and related products, n.e.s.(a)(b)	64	115	191	473	228	464
51 Organic chemicals(a)(b)	2	29	13	137	13	123
52 Inorganic chemicals(a)(b)	21	7	51	31	74	26
53 Dyeing, tanning and colouring materials(b)	10	10	31	46	34	45
54 Medicinal and pharmaceutical products(a)	9	14	36	51	36	52
55 Essential oils and resinoids and perfume materials: toilet, polishing and cleansing preparations(b)	3	2	8	9	9	8
56 Fertilisers (excluding crude)	—	—	—	3	—	2
57 Plastics in primary forms(a)(b)	1	20	2	78	2	80
58 Plastics in non-primary forms(b)	2	22	2	77	5	84
59 Chemical materials and products, n.e.s.(a)(b)	17	11	47	41	55	44

Section and Division of the SITC Rev3	JUN QTR 2000		12 MONTHS ENDED JUN 1999		12 MONTHS ENDED JUN 2000	
	<i>Exports</i>	<i>Imports</i>	<i>Exports</i>	<i>Imports</i>	<i>Exports</i>	<i>Imports</i>
	\$m	\$m	\$m	\$m	\$m	\$m
6 Manufactured goods classified chiefly by material(a)(b)	437	304	1 400	1 179	1 746	1 220
61 Leather, leather manufactures, and dressed furskins, n.e.s.(a)	1	—	7	2	6	1
62 Rubber manufactures, n.e.s.(b)	5	98	20	372	19	379
63 Cork and wood manufactures (excluding furniture)(a)	6	—	20	—	21	1
64 Paper, paperboard, and articles of paper pulp, of paper or of paperboard(b)	1	28	3	85	3	108
65 Textile yarn, fabrics, made-up articles, n.e.s., and related products(a)(b)	3	23	12	105	13	96
66 Non-metallic mineral manufactures, n.e.s.(a)	37	28	91	84	134	101
67 Iron and steel(a)(b)	23	91	50	396	44	392
68 Non-ferrous metals(a)(b)	353	9	1 187	33	1 482	36
69 Manufactures of metals, n.e.s.(a)(b)	8	27	10	103	24	106
7 Machinery and transport equipment(a)(b)	109	3 031	390	10 709	427	11 175
71 Power generating machinery and equipment	31	66	111	274	119	295
72 Machinery specialised for particular industries(a)(b)	3	148	17	605	17	582
73 Metal working machinery(b)	3	24	4	121	8	94
74 General industrial machinery and equipment, n.e.s. and machine parts, n.e.s.(a)(b)	10	189	45	736	45	730
75 Office machines and automatic data processing machines	13	303	97	990	83	1 127
76 Telecommunications and sound recording and reproducing apparatus and equipment(a)(b)	4	224	7	734	13	820
77 Electrical machinery, apparatus, appliances, parts (including non-electrical counterparts of electrical domestic equipment)(a)(b)	14	143	37	514	53	550
78 Road vehicles (including air-cushion vehicles)	26	1 931	57	6 690	74	6 949
79 Transport equipment (excluding road vehicles)	7	4	15	46	16	28
8 Miscellaneous manufactured articles(a)(b)	46	208	163	882	170	850
81 Prefabricated buildings; sanitary, plumbing, heating and lighting fixtures and fittings, n.e.s.	—	13	3	24	2	24
82 Furniture, parts thereof; bedding, mattresses, mattress supports, cushions and similar stuffed furnishings	2	2	9	6	10	6
83 Travel goods, handbags and similar containers	1	1	1	1	1	2
84 Articles of apparel and clothing accessories	3	3	7	9	8	10
85 Footwear(a)	—	—	1	—	1	—
87 Professional, scientific and controlling instruments and apparatus, n.e.s.	20	43	69	155	65	160
88 Photographic apparatus, equipment and supplies and optical goods, n.e.s.; watches and clocks(b)	3	80	14	284	14	295
89 Miscellaneous manufactured articles, n.e.s.(b)	17	68	58	401	70	354
9 Commodities and transactions n.e.c. in the SITC(c)	1 171	81	2 898	222	3 868	280
93 Special transactions and commodities not classified according to kind	2	—	9	4	9	3
95 Gold coin whether or not legal tender, and other coin being legal tender	3	—	8	—	10	—
96 Coin (excluding gold coin), not being legal tender	—	—	—	—	1	—
97 Gold, non-monetary (excluding gold ores and concentrates)	101	—	377	—	346	—
98 Combined confidential items of trade and commodities n.e.s.(c)	1 066	80	2 504	218	3 503	277
Total trade	5 070	3 791	16 566	13 587	18 800	14 138

(a) Excludes export commodities subject to a confidentiality restriction. These are included in Division 98. See paragraph 28 of the Explanatory Notes.

(b) Excludes import commodities subject to a confidentiality restriction. These are included in Division 98. See paragraph 28 of the Explanatory Notes.

(c) Includes export and import commodities subject to a confidentiality restriction. See paragraph 28 of the Explanatory Notes.

Section and Division of the SITC Rev3	JUN QTR 2000		12 MONTHS ENDED JUN 1999		12 MONTHS ENDED JUN 2000	
	Exports	Imports	Exports	Imports	Exports	Imports
	\$m	\$m	\$m	\$m	\$m	\$m
0 Food and live animals(a)	105	8	335	30	371	29
00 Live animals other than fish, crustaceans, molluscs and aquatic invertebrates	2	—	2	—	3	—
01 Meat and meat preparations	66	—	227	—	232	—
02 Dairy products and birds' eggs	19	—	46	—	63	—
03 Fish (not marine mammals), crustaceans, molluscs and aquatic invertebrates, and preparations thereof(a)	—	2	2	8	2	8
04 Cereals and cereal preparations(a)	7	2	23	9	23	8
05 Vegetables and fruit(a)	1	—	5	1	7	1
06 Sugars, sugar preparations and honey(a)	—	1	2	3	4	3
07 Coffee, tea, cocoa, spices and manufactures thereof	1	1	9	1	11	2
08 Feeding stuff for animals (excluding unmilled cereals)(a)	4	—	10	1	12	—
09 Miscellaneous edible products and preparations(a)	5	3	10	7	14	7
1 Beverages and tobacco(a)	1	—	1	—	4	1
11 Beverages	1	—	1	—	4	1
12 Tobacco and tobacco manufactures(a)	—	—	—	—	—	—
2 Crude materials, inedible, except fuels(a)(b)	428	6	1 417	10	1 369	18
21 Hides, skins and furskins, raw(a)	—	—	2	—	1	—
22 Oil seeds and oleaginous fruits	6	—	28	—	26	—
23 Crude rubber (including synthetic and reclaimed)(b)	—	2	—	3	—	6
24 Cork and wood	17	—	33	—	47	—
25 Pulp and waste paper	1	—	4	—	7	—
26 Textile fibres and their wastes (not manufactured into yarn or fabric)(a)	115	2	285	4	338	7
27 Crude fertilisers (excluding those of Division 56) and crude minerals (excluding coal, petroleum and precious stones)(a)(b)	—	—	1	—	10	—
28 Metalliferous ores and metal scrap(a)	288	—	1 061	1	939	2
29 Crude animal and vegetable materials, n.e.s.	1	1	3	1	2	3
3 Mineral fuels, lubricants and related materials(a)(b)	539	20	1 333	23	1 946	120
32 Coal, coke and briquettes(a)	188	—	1 048	—	781	—
33 Petroleum, petroleum products and related materials(b)	340	20	259	23	1 123	120
34 Gas, natural and manufactured(a)	11	—	26	—	42	—
4 Animal and vegetable oils, fats and waxes(a)(b)	1	—	7	—	6	—
41 Animal oils and fats(a)	—	—	1	—	1	—
42 Fixed vegetable fats and oils, crude, refined or fractionated(a)(b)	—	—	3	—	1	—
43 Fats and oils (processed), waxes and inedible mixtures or preparations, of animal or vegetable origin, n.e.s.	1	—	3	—	4	—
5 Chemical and related products, n.e.s.(a)(b)	52	50	106	163	155	208
51 Organic chemicals(a)(b)	—	10	2	29	1	44
52 Inorganic chemicals(a)(b)	1	1	5	7	5	7
53 Dyeing, tanning and colouring materials(b)	27	4	72	8	97	15
54 Medicinal and pharmaceutical products(a)	18	—	12	1	37	2
55 Essential oils and resinoids and perfume materials: toilet, polishing and cleansing preparations(b)	1	1	4	2	5	3
56 Fertilisers (excluding crude)(b)	—	—	—	—	—	—
57 Plastics in primary forms(a)(b)	1	17	3	53	5	71
58 Plastics in non-primary forms(b)	—	13	1	45	1	52
59 Chemical materials and products, n.e.s.(a)(b)	1	3	6	17	4	13

Section and Division of the SITC Rev3	JUN QTR 2000		12 MONTHS ENDED JUN 1999		12 MONTHS ENDED JUN 2000	
	Exports	Imports	Exports	Imports	Exports	Imports
	\$m	\$m	\$m	\$m	\$m	\$m
6 Manufactured goods classified chiefly by material(a)(b)	239	194	747	729	929	766
61 Leather, leather manufactures, and dressed furskins, n.e.s.(a)	—	1	1	2	2	2
62 Rubber manufactures, n.e.s.(b)	—	23	1	100	1	90
63 Cork and wood manufactures (excluding furniture)(a)	6	—	11	—	17	—
64 Paper, paperboard, and articles of paper pulp, of paper or of paperboard(b)	1	22	1	103	3	110
65 Textile yarn, fabrics, made-up articles, n.e.s., and related products(a)(b)	3	59	7	212	13	218
66 Non-metallic mineral manufactures, n.e.s.(a)(b)	4	7	5	27	10	28
67 Iron and steel(a)(b)	53	48	120	163	125	192
68 Non-ferrous metals(a)(b)	169	12	591	40	748	44
69 Manufactures of metals, n.e.s.(a)(b)	3	21	9	81	10	82
7 Machinery and transport equipment(a)(b)	146	607	259	1 838	490	2 253
71 Power generating machinery and equipment	94	15	133	13	301	42
72 Machinery specialised for particular industries(a)	3	18	7	42	10	51
73 Metal working machinery	1	3	1	14	2	9
74 General industrial machinery and equipment, n.e.s. and machine parts, n.e.s.(a)(b)	5	28	19	169	18	164
75 Office machines and automatic data processing machines	4	61	32	137	30	188
76 Telecommunications and sound recording and reproducing apparatus and equipment(a)	—	202	15	482	7	796
77 Electrical machinery, apparatus, appliances, parts (including non-electrical counterparts of electrical domestic equipment)(a)(b)	5	69	10	175	14	245
78 Road vehicles (including air-cushion vehicles)	32	210	36	672	105	757
79 Transport equipment (excluding road vehicles)	1	—	6	133	3	1
8 Miscellaneous manufactured articles(a)(b)	27	40	79	153	103	163
81 Prefabricated buildings; sanitary, plumbing, heating and lighting fixtures and fittings, n.e.s.	—	—	—	1	—	1
82 Furniture, parts thereof; bedding, mattresses, mattress supports, cushions and similar stuffed furnishings	1	1	1	2	3	2
83 Travel goods, handbags and similar containers	—	1	—	5	—	6
84 Articles of apparel and clothing accessories	—	7	1	27	1	30
85 Footwear(a)	—	4	—	14	—	17
87 Professional, scientific and controlling instruments and apparatus, n.e.s.	3	3	11	9	14	9
88 Photographic apparatus, equipment and supplies and optical goods, n.e.s.; watches and clocks(b)	16	4	51	15	66	17
89 Miscellaneous manufactured articles, n.e.s.(b)	6	21	15	80	18	82
9 Commodities and transactions n.e.c. in the SITC(c)	833	311	2 037	948	2 242	753
93 Special transactions and commodities not classified according to kind	250	—	65	—	553	—
95 Gold coin whether or not legal tender, and other coin being legal tender	—	—	—	—	—	—
96 Coin (excluding gold coin), not being legal tender	—	—	—	—	—	—
97 Gold, non-monetary (excluding gold ores and concentrates)	349	277	1 097	859	686	625
98 Combined confidential items of trade and commodities n.e.s.(c)	234	34	874	89	1 003	128
Total trade	2 370	1 236	6 320	3 894	7 615	4 311

(a) Excludes export commodities subject to a confidentiality restriction. These are included in Division 98. See paragraph 28 of the Explanatory Notes.

(b) Excludes import commodities subject to a confidentiality restriction. These are included in Division 98. See paragraph 28 of the Explanatory Notes.

(c) Includes export and import commodities subject to a confidentiality restriction. See paragraph 28 of the Explanatory Notes.

Section and Division of the SITC Rev3	JUN QTR 2000		12 MONTHS ENDED JUN 1999		12 MONTHS ENDED JUN 2000	
	Exports	Imports	Exports	Imports	Exports	Imports
	\$m	\$m	\$m	\$m	\$m	\$m
0 Food and live animals(a)(b)	136	187	486	671	537	741
00 Live animals other than fish, crustaceans, molluscs and aquatic invertebrates	15	27	20	83	32	95
01 Meat and meat preparations	12	4	27	14	35	17
02 Dairy products and birds' eggs	8	45	24	162	35	174
03 Fish (not marine mammals), crustaceans, molluscs and aquatic invertebrates, and preparations thereof(a)	2	34	7	134	7	146
04 Cereals and cereal preparations(a)	22	7	95	34	94	30
05 Vegetables and fruit(a)	18	27	101	122	91	122
06 Sugars, sugar preparations and honey(a)	6	3	25	17	29	13
07 Coffee, tea, cocoa, spices and manufactures thereof	14	4	61	13	67	17
08 Feeding stuff for animals (excluding unmilled cereals)(a)(b)	11	3	40	3	43	13
09 Miscellaneous edible products and preparations(a)	29	33	84	89	105	115
1 Beverages and tobacco(a)	27	22	102	52	113	83
11 Beverages	25	21	97	50	107	81
12 Tobacco and tobacco manufactures(a)	2	1	5	2	6	2
2 Crude materials, inedible, except fuels(a)(b)	17	135	83	354	73	428
21 Hides, skins and furskins, raw(a)	3	—	17	1	11	—
22 Oil seeds and oleaginous fruits	1	—	4	1	4	1
23 Crude rubber (including synthetic and reclaimed)(b)	2	—	5	—	6	—
24 Cork and wood	2	81	9	203	9	254
25 Pulp and waste paper	—	31	—	77	1	87
26 Textile fibres and their wastes (not manufactured into yarn or fabric)(a)	1	12	4	43	5	50
27 Crude fertilisers (excluding those of Division 56) and crude minerals (excluding coal, petroleum and precious stones)(a)(b)	5	1	18	3	17	4
28 Metalliferous ores and metal scrap(a)	2	3	17	6	12	8
29 Crude animal and vegetable materials, n.e.s.	1	6	9	20	8	23
3 Mineral fuels, lubricants and related materials(a)(b)	124	97	376	253	520	330
32 Coal, coke and briquettes	1	—	2	12	3	4
33 Petroleum, petroleum products and related materials(b)	123	96	371	237	516	319
34 Gas, natural and manufactured(a)	—	2	4	4	1	7
4 Animal and vegetable oils, fats and waxes(a)(b)	4	1	17	4	15	3
41 Animal oils and fats(a)	1	—	4	2	2	1
42 Fixed vegetable fats and oils, crude, refined or fractionated(a)(b)	3	—	10	1	11	1
43 Fats and oils (processed), waxes and inedible mixtures or preparations, of animal or vegetable origin, n.e.s.	1	—	3	2	2	1
5 Chemical and related products, n.e.s.(a)(b)	181	93	724	351	761	353
51 Organic chemicals(a)(b)	7	3	23	7	20	8
52 Inorganic chemicals(a)(b)	8	—	34	7	40	1
53 Dyeing, tanning and colouring materials(b)	15	3	60	10	68	12
54 Medicinal and pharmaceutical products(a)	73	10	258	30	271	35
55 Essential oils and resinoids and perfume materials: toilet, polishing and cleansing preparations(b)	31	21	127	99	135	102
56 Fertilisers (excluding crude)	2	4	5	6	7	6
57 Plastics in primary forms(a)(b)	15	7	66	19	65	21
58 Plastics in non-primary forms(b)	12	12	54	58	60	56
59 Chemical materials and products, n.e.s.(a)(b)	18	32	96	114	94	111

Section and Division of the SITC Rev3	JUN QTR 2000		12 MONTHS ENDED JUN 1999		12 MONTHS ENDED JUN 2000	
	Exports	Imports	Exports	Imports	Exports	Imports
	\$m	\$m	\$m	\$m	\$m	\$m
6 Manufactured goods classified chiefly by material(a)(b)	238	268	943	911	1 037	998
61 Leather, leather manufactures, and dressed furskins, n.e.s.(a)	2	8	11	30	9	29
62 Rubber manufactures, n.e.s.(b)	8	13	29	55	31	43
63 Cork and wood manufactures (excl. furniture)(a)	3	29	16	74	19	103
64 Paper, paperboard, and articles of paper pulp, of paper or of paperboard(b)	69	84	238	255	285	307
65 Textile yarn, fabrics, made-up articles, n.e.s., and related products(a)(b)	32	43	130	167	134	180
66 Non-metallic mineral manufactures, n.e.s.(a)	23	4	85	11	101	14
67 Iron and steel(a)(b)	28	21	132	82	129	79
68 Non-ferrous metals(a)(b)	35	31	165	119	171	121
69 Manufactures of metals, n.e.s.(a)(b)	38	35	138	118	158	123
7 Machinery and transport equipment(a)(b)	409	179	1 736	688	2 220	698
71 Power generating machinery and equipment	16	2	57	7	67	18
72 Machinery specialised for particular industries(a)(b)	32	14	146	84	141	70
73 Metal working machinery	6	2	28	6	34	6
74 General industrial machinery and equipment, n.e.s. and machine parts, n.e.s.(a)(b)	43	47	177	161	182	175
75 Office machines and automatic data processing machines	96	5	398	17	350	16
76 Telecommunications and sound recording and reproducing apparatus and equipment(a)	16	7	89	32	87	32
77 Electrical machinery, apparatus, appliances, parts (including non-electrical counterparts of electrical domestic equipment)(a)(b)	73	83	281	287	295	306
78 Road vehicles (including air-cushion vehicles)	113	10	411	56	499	52
79 Transport equipment (excluding road vehicles)	14	9	149	38	562	22
8 Miscellaneous manufactured articles(a)(b)	197	119	863	453	869	489
81 Prefabricated buildings; sanitary, plumbing, heating and lighting fixtures and fittings, n.e.s.(b)	5	3	27	10	26	10
82 Furniture, parts thereof; bedding, mattresses, mattress supports, cushions and similar stuffed furnishings	6	15	40	62	39	59
83 Travel goods, handbags and similar containers	2	1	7	4	7	4
84 Articles of apparel and clothing accessories	27	31	142	123	125	135
85 Footwear(a)	5	8	25	30	23	34
87 Professional, scientific and controlling instruments and apparatus, n.e.s.	32	9	124	32	124	39
88 Photographic apparatus, equipment and supplies and optical goods, n.e.s.; watches and clocks(b)	25	1	102	3	106	3
89 Miscellaneous manufactured articles, n.e.s.(b)	94	51	397	189	418	207
9 Commodities and transactions n.e.c. in the SITC(c)	147	63	508	213	588	249
93 Special transactions and commodities not classified according to kind	56	—	177	1	228	1
95 Gold coin whether or not legal tender, and other coin being legal tender	—	—	—	—	1	—
96 Coin (excluding gold coin), not being legal tender	—	—	—	—	—	—
97 Gold, non-monetary (excluding gold ores and concentrates)	2	51	10	150	7	167
98 Combined confidential items of trade and commodities n.e.s.(c)	89	11	321	62	352	81
Total trade	1 481	1 162	5 838	3 950	6 731	4 373

(a) Excludes export commodities subject to a confidentiality restriction. These are included in Division 98. See paragraph 28 of the Explanatory Notes.

(b) Excludes import commodities subject to a confidentiality restriction. These are included in Division 98. See paragraph 28 of the Explanatory Notes.

(c) Includes export and import commodities subject to a confidentiality restriction. See paragraph 28 of the Explanatory Notes.

Section and Division of the SITC Rev3	JUN QTR 2000		12 MONTHS ENDED JUN 1999		12 MONTHS ENDED JUN 2000	
	Exports	Imports	Exports	Imports	Exports	Imports
	\$m	\$m	\$m	\$m	\$m	\$m
0 Food and live animals(a)	159	9	608	38	605	38
00 Live animals other than fish, crustaceans, molluscs and aquatic invertebrates	—	—	—	—	—	—
01 Meat and meat preparations	34	—	168	—	159	—
02 Dairy products and birds' eggs	33	—	112	—	123	—
03 Fish (not marine mammals), crustaceans, molluscs and aquatic invertebrates, and preparations thereof(a)	67	4	170	18	210	18
04 Cereals and cereal preparations(a)	2	1	36	3	9	3
05 Vegetables and fruit(a)	7	1	40	4	42	3
06 Sugars, sugar preparations and honey(a)	2	—	31	1	3	1
07 Coffee, tea, cocoa, spices and manufactures thereof	4	—	12	1	14	1
08 Feeding stuff for animals (excluding unmilled cereals)(a)	7	1	27	5	34	6
09 Miscellaneous edible products and preparations(a)	4	1	12	7	12	6
1 Beverages and tobacco(a)	1	4	5	12	4	14
11 Beverages	1	—	5	—	4	—
12 Tobacco and tobacco manufactures(a)	—	3	—	11	—	13
2 Crude materials, inedible, except fuels(a)(b)	185	9	618	23	586	29
21 Hides, skins and furskins, raw(a)	2	—	3	—	3	—
22 Oil seeds and oleaginous fruits	—	—	2	—	2	—
23 Crude rubber (including synthetic and reclaimed)(b)	—	—	—	1	—	2
24 Cork and wood(a)	3	—	24	—	21	—
25 Pulp and waste paper	—	—	—	—	—	—
26 Textile fibres and their wastes (not manufactured into yarn or fabric)(a)	69	4	226	12	225	15
27 Crude fertilisers (excluding those of Division 56) and crude minerals (excluding coal, petroleum and precious stones)(a)(b)	1	—	5	—	8	1
28 Metalliferous ores and metal scrap(a)	107	2	349	4	317	7
29 Crude animal and vegetable materials, n.e.s.	2	1	7	5	9	4
3 Mineral fuels, lubricants and related materials(a)(b)	334	15	894	7	1 173	15
32 Coal, coke and briquettes(a)	144	—	589	—	535	—
33 Petroleum, petroleum products and related materials(b)	190	15	305	7	629	15
34 Gas, natural and manufactured(a)	—	—	—	—	9	—
4 Animal and vegetable oils, fats and waxes(a)(b)	10	1	42	3	39	3
41 Animal oils and fats(a)	7	—	34	—	30	—
42 Fixed vegetable fats and oils, crude, refined or fractionated(a)(b)	—	—	—	—	—	—
43 Fats and oils (processed), waxes and inedible mixtures or preparations, of animal or vegetable origin, n.e.s.	2	1	8	3	9	2
5 Chemical and related products, n.e.s.(a)(b)	47	54	143	181	139	209
51 Organic chemicals(a)(b)	—	10	1	18	1	28
52 Inorganic chemicals(a)(b)	2	6	9	6	14	13
53 Dyeing, tanning and colouring materials(b)	6	1	18	5	20	5
54 Medicinal and pharmaceutical products(a)	29	1	72	5	72	4
55 Essential oils and resinoids and perfume materials: toilet, polishing and cleansing preparations(b)	4	4	14	27	13	22
56 Fertilisers (excluding crude)	—	—	—	2	1	2
57 Plastics in primary forms(a)(b)	1	14	10	43	5	57
58 Plastics in non-primary forms(b)	1	17	9	69	4	72
59 Chemical materials and products, n.e.s.(a)(b)	3	1	9	6	10	6

Section and Division of the SITC Rev3	JUN QTR 2000		12 MONTHS ENDED JUN 1999		12 MONTHS ENDED JUN 2000	
	Exports	Imports	Exports	Imports	Exports	Imports
	\$m	\$m	\$m	\$m	\$m	\$m
6 Manufactured goods classified chiefly by material(a)(b)	320	167	888	672	1 122	692
61 Leather, leather manufactures, and dressed furskins, n.e.s.(a)	1	1	13	4	2	3
62 Rubber manufactures, n.e.s.(b)	—	13	4	46	3	51
63 Cork and wood manufactures (excluding furniture)(a)	6	1	14	7	15	5
64 Paper, paperboard, and articles of paper pulp, of paper or of paperboard(b)	6	3	9	28	16	17
65 Textile yarn, fabrics, made-up articles, n.e.s., and related products(a)(b)	2	42	7	209	8	188
66 Non-metallic mineral manufactures, n.e.s.(a)	1	14	16	44	8	49
67 Iron and steel(a)(b)	19	19	71	59	74	93
68 Non-ferrous metals(a)(b)	283	4	747	10	992	13
69 Manufactures of metals, n.e.s.(a)(b)	2	70	7	266	5	272
7 Machinery and transport equipment(a)(b)	43	472	153	1 579	127	1 708
71 Power generating machinery and equipment	7	8	29	34	18	31
72 Machinery specialised for particular industries(a)	3	15	11	60	10	63
73 Metal working machinery	—	10	1	33	1	34
74 General industrial machinery and equipment, n.e.s. and machine parts, n.e.s.(a)(b)	12	30	26	141	40	134
75 Office machines and automatic data processing machines	11	280	38	868	25	937
76 Telecommunications and sound recording and reproducing apparatus and equipment(a)	2	40	8	99	4	126
77 Electrical machinery, apparatus, appliances, parts (including non-electrical counterparts of electrical domestic equipment)(a)(b)	4	69	19	243	13	271
78 Road vehicles (including air-cushion vehicles)	4	20	19	99	15	109
79 Transport equipment (excluding road vehicles)	—	1	1	3	1	4
8 Miscellaneous manufactured articles(a)(b)	12	125	64	424	62	477
81 Prefabricated buildings; sanitary, plumbing, heating and lighting fixtures and fittings, n.e.s.	1	8	1	31	1	35
82 Furniture, parts thereof; bedding, mattresses, mattress supports, cushions and similar stuffed furnishings	—	20	2	62	1	79
83 Travel goods, handbags and similar containers	—	1	—	8	—	7
84 Articles of apparel and clothing accessories	—	7	1	27	1	24
85 Footwear(a)	—	2	—	11	—	10
87 Professional, scientific and controlling instruments and apparatus, n.e.s.	5	8	8	29	16	29
88 Photographic apparatus, equipment and supplies and optical goods, n.e.s.; watches and clocks(b)	2	10	32	43	21	39
89 Miscellaneous manufactured articles, n.e.s.(b)	4	69	19	213	21	253
9 Commodities and transactions n.e.c. in the SITC(c)	211	21	789	39	830	61
93 Special transactions and commodities not classified according to kind	4	—	24	—	21	—
95 Gold coin whether or not legal tender, and other coin being legal tender	1	—	7	—	7	2
96 Coin (excluding gold coin), not being legal tender	—	—	—	—	1	—
97 Gold, non-monetary (excluding gold ores and concentrates)	68	—	383	—	262	—
98 Combined confidential items of trade and commodities n.e.s.(c)	137	21	375	39	539	59
Total trade	1 322	876	4 203	2 978	4 687	3 244

(a) Excludes export commodities subject to a confidentiality restriction. These are included in Division 98. See paragraph 28 of the Explanatory Notes.

(c) Includes export and import commodities subject to a confidentiality restriction. See paragraph 28 of the Explanatory Notes.

(b) Excludes import commodities subject to a confidentiality restriction. These are included in Division 98. See paragraph 28 of the Explanatory Notes.

EXPORTS AND IMPORTS, By Commodity—United Kingdom

Section and Division of the SITC Rev3	JUN QTR 2000		12 MONTHS ENDED JUN 1999		12 MONTHS ENDED JUN 2000	
	Exports	Imports	Exports	Imports	Exports	Imports
	\$m	\$m	\$m	\$m	\$m	\$m
0 Food and live animals(a)	52	32	209	130	184	140
00 Live animals other than fish, crustaceans, molluscs and aquatic invertebrates	1	3	1	14	3	20
01 Meat and meat preparations	29	—	112	—	99	—
02 Dairy products and birds' eggs	6	1	30	3	25	3
03 Fish (not marine mammals), crustaceans, molluscs and aquatic invertebrates, and preparations thereof(a)	—	2	2	6	2	7
04 Cereals and cereal preparations(a)	1	2	4	17	3	15
05 Vegetables and fruit(a)	13	2	50	5	41	6
06 Sugars, sugar preparations and honey(a)	1	1	5	9	5	9
07 Coffee, tea, cocoa, spices and manufactures thereof	—	10	1	40	2	40
08 Feeding stuff for animals (excluding unmilled cereals)(a)	—	1	—	1	1	1
09 Miscellaneous edible products and preparations(a)	1	11	3	36	4	39
1 Beverages and tobacco(a)	168	33	500	115	609	135
11 Beverages	168	32	500	110	609	130
12 Tobacco and tobacco manufactures(a)	—	1	—	5	—	5
2 Crude materials, inedible, except fuels(a)(b)	55	8	282	71	219	36
21 Hides, skins and furskins, raw(a)	—	—	2	—	2	—
22 Oil seeds and oleaginous fruits	—	—	14	—	3	—
23 Crude rubber (including synthetic and reclaimed)(b)	—	1	—	3	—	3
24 Cork and wood	2	—	6	1	5	1
25 Pulp and waste paper	—	—	—	—	—	—
26 Textile fibres and their wastes (not manufactured into yarn or fabric)(a)	15	4	48	16	46	16
27 Crude fertilisers (excluding those of Division 56) and crude minerals (excluding coal, petroleum and precious stones)(a)(b)	1	1	3	3	4	5
28 Metalliferous ores and metal scrap(a)	35	—	199	39	152	3
29 Crude animal and vegetable materials, n.e.s.	2	2	9	9	7	8
3 Mineral fuels, lubricants and related materials(a)(b)	102	1	346	3	325	4
32 Coal, coke and briquettes	102	—	335	—	325	—
33 Petroleum, petroleum products and related materials(b)	—	1	10	3	—	4
34 Gas, natural and manufactured(a)	—	—	—	—	—	—
4 Animal and vegetable oils, fats and waxes(a)(b)	3	1	5	2	9	3
41 Animal oils and fats(a)	3	—	3	1	8	1
42 Fixed vegetable fats and oils, crude, refined or fractionated(a)(b)	—	—	1	1	1	1
43 Fats and oils (processed), waxes and inedible mixtures or preparations, of animal or vegetable origin, n.e.s.	—	—	—	—	—	—
5 Chemical and related products, n.e.s.(a)(b)	43	397	176	1 348	198	1 428
51 Organic chemicals(a)(b)	—	71	1	265	1	261
52 Inorganic chemicals(a)(b)	1	4	3	27	5	19
53 Dyeing, tanning and colouring materials(b)	3	11	8	50	8	46
54 Medicinal and pharmaceutical products(a)	31	239	139	698	154	810
55 Essential oils and resinoids and perfume materials: toilet, polishing and cleansing preparations(b)	3	24	9	88	13	102
56 Fertilisers (excluding crude)	—	1	1	9	—	8
57 Plastics in primary forms(a)(b)	—	10	1	45	—	37
58 Plastics in non-primary forms(b)	1	14	6	71	7	62
59 Chemical materials and products, n.e.s.(a)(b)	3	23	7	95	10	84

Section and Division of the SITC Rev3	JUN QTR 2000		12 MONTHS ENDED JUN 1999		12 MONTHS ENDED JUN 2000	
	Exports	Imports	Exports	Imports	Exports	Imports
	\$m	\$m	\$m	\$m	\$m	\$m
6 Manufactured goods classified chiefly by material(a)(b)	89	138	373	578	404	545
61 Leather, leather manufactures, and dressed furskins, n.e.s.(a)(b)	—	1	1	3	1	3
62 Rubber manufactures, n.e.s.(b)	7	9	23	47	24	36
63 Cork and wood manufactures (excluding furniture)(a)	1	1	6	2	3	3
64 Paper, paperboard, and articles of paper pulp, of paper or of paperboard(b)	2	13	1	58	9	56
65 Textile yarn, fabrics, made-up articles, n.e.s., and related products(a)(b)	10	22	38	93	37	86
66 Non-metallic mineral manufactures, n.e.s.(a)(b)	3	26	14	98	20	100
67 Iron and steel(a)(b)	3	17	7	84	8	72
68 Non-ferrous metals(a)(b)	58	13	262	42	279	38
69 Manufactures of metals, n.e.s.(a)(b)	6	36	21	151	25	150
7 Machinery and transport equipment(a)(b)	113	1 008	391	2 224	429	2 937
71 Power generating machinery and equipment	7	76	48	206	67	281
72 Machinery specialised for particular industries(a)	19	74	37	352	50	272
73 Metal working machinery	8	4	11	22	16	20
74 General industrial machinery and equipment, n.e.s. and machine parts, n.e.s.(a)(b)	17	57	77	334	58	264
75 Office machines and automatic data processing machines	9	32	37	169	40	121
76 Telecommunications and sound recording and reproducing apparatus and equipment(a)	7	323	27	321	24	743
77 Electrical machinery, apparatus, appliances, parts (including non-electrical counterparts of electrical domestic equipment)(a)(b)	16	77	62	320	59	268
78 Road vehicles (including air-cushion vehicles)	9	125	33	370	26	409
79 Transport equipment (excluding road vehicles)	22	240	58	129	87	559
8 Miscellaneous manufactured articles(a)(b)	59	235	199	1 010	180	945
81 Prefabricated buildings; sanitary, plumbing, heating and lighting fixtures and fittings, n.e.s.	—	3	4	14	2	14
82 Furniture, parts thereof; bedding, mattresses, mattress supports, cushions and similar stuffed furnishings	2	5	4	39	5	27
83 Travel goods, handbags and similar containers	—	1	—	3	—	3
84 Articles of apparel and clothing accessories	2	5	9	18	8	19
85 Footwear(a)	—	4	2	15	2	15
87 Professional, scientific and controlling instruments and apparatus, n.e.s.	20	67	46	233	65	228
88 Photographic apparatus, equipment and supplies and optical goods, n.e.s.; watches and clocks(b)	3	9	15	43	9	37
89 Miscellaneous manufactured articles, n.e.s.(b)	31	142	121	644	88	601
9 Commodities and transactions n.e.c. in the SITC(c)	282	13	1 994	65	1 600	183
93 Special transactions and commodities not classified according to kind	3	2	9	5	376	6
95 Gold coin whether or not legal tender, and other coin being legal tender	—	—	—	—	1	1
96 Coin (excluding gold coin), not being legal tender	—	—	—	—	—	—
97 Gold, non-monetary (excluding gold ores and concentrates)	108	—	1 638	17	769	147
98 Combined confidential items of trade and commodities n.e.s.(c)	171	10	346	42	455	29
Total trade	967	1 867	4 473	5 545	4 156	6 356

(a) Excludes export commodities subject to a confidentiality restriction. These are included in Division 98. See paragraph 28 of the Explanatory Notes.

(b) Excludes import commodities subject to a confidentiality restriction. These are included in Division 98. See paragraph 28 of the Explanatory Notes.

(c) Includes export and import commodities subject to a confidentiality restriction. See paragraph 28 of the Explanatory Notes.

Section and Division of the SITC Rev3	JUN QTR 2000		12 MONTHS ENDED JUN 1999		12 MONTHS ENDED JUN 2000	
	<i>Exports</i>	<i>Imports</i>	<i>Exports</i>	<i>Imports</i>	<i>Exports</i>	<i>Imports</i>
	\$m	\$m	\$m	\$m	\$m	\$m
0 Food and live animals(a)(b)	459	91	1 253	423	1 526	393
00 Live animals other than fish, crustaceans, molluscs and aquatic invertebrates	2	4	3	21	4	10
01 Meat and meat preparations	357	1	922	7	1 176	6
02 Dairy products and birds' eggs	12	1	64	4	54	4
03 Fish (not marine mammals), crustaceans, molluscs and aquatic invertebrates, and preparations thereof(a)	42	6	129	38	142	38
04 Cereals and cereal preparations(a)	1	11	3	35	4	30
05 Vegetables and fruit(a)	26	27	89	124	95	122
06 Sugars, sugar preparations and honey(a)(b)	5	3	16	14	16	13
07 Coffee, tea, cocoa, spices and manufactures thereof(b)	—	7	2	41	2	43
08 Feeding stuff for animals (excluding unmilled cereals)(a)	4	10	13	56	13	40
09 Miscellaneous edible products and preparations(a)	10	21	11	82	20	87
1 Beverages and tobacco(a)	94	28	239	116	334	122
11 Beverages	94	14	239	68	334	78
12 Tobacco and tobacco manufactures(a)	—	14	—	48	—	44
2 Crude materials, inedible, except fuels(a)(b)	97	67	275	247	306	295
21 Hides, skins and furskins, raw(a)	—	—	1	—	1	—
22 Oil seeds and oleaginous fruits	22	14	34	40	48	62
23 Crude rubber (including synthetic and reclaimed)(b)	—	5	—	19	1	20
24 Cork and wood	4	8	9	38	12	33
25 Pulp and waste paper	—	7	—	21	—	25
26 Textile fibres and their wastes (not manufactured into yarn or fabric)(a)	19	3	83	18	64	15
27 Crude fertilisers (excluding those of Division 56) and crude minerals (excluding coal, petroleum and precious stones)(a)(b)	6	8	21	31	28	32
28 Metalliferous ores and metal scrap(a)	34	1	84	4	109	27
29 Crude animal and vegetable materials, n.e.s.	12	21	42	76	42	81
3 Mineral fuels, lubricants and related materials(a)(b)	370	50	427	223	956	210
32 Coal, coke and briquettes	1	—	9	—	5	—
33 Petroleum, petroleum products and related materials(b)	368	50	405	221	950	207
34 Gas, natural and manufactured(a)	—	1	13	2	2	2
4 Animal and vegetable oils, fats and waxes(a)(b)	1	2	7	6	5	8
41 Animal oils and fats(a)	1	—	4	1	3	1
42 Fixed vegetable fats and oils, crude, refined or fractionated(a)(b)	—	—	2	2	1	3
43 Fats and oils (processed), waxes and inedible mixtures or preparations, of animal or vegetable origin, n.e.s.	—	1	2	4	2	5
5 Chemical and related products, n.e.s.(a)(b)	105	763	358	2 829	423	3 079
51 Organic chemicals(a)(b)	4	165	14	567	23	764
52 Inorganic chemicals(a)(b)	21	23	16	116	87	111
53 Dyeing, tanning and colouring materials(b)	2	25	44	110	8	104
54 Medicinal and pharmaceutical products(a)	20	158	104	460	94	585
55 Essential oils and resinoids and perfume materials: toilet, polishing and cleansing preparations(b)	13	69	21	267	33	297
56 Fertilisers (excluding crude)(b)	—	94	—	389	1	298
57 Plastics in primary forms(a)(b)	1	56	2	211	3	220
58 Plastics in non-primary forms(b)	4	63	7	250	13	249
59 Chemical materials and products, n.e.s.(a)(b)	40	110	149	458	162	450

Section and Division of the SITC Rev3	JUN QTR 2000		12 MONTHS ENDED JUN 1999		12 MONTHS ENDED JUN 2000	
	Exports	Imports	Exports	Imports	Exports	Imports
	\$m	\$m	\$m	\$m	\$m	\$m
6 Manufactured goods classified chiefly by material(a)(b)	309	397	974	1 729	1 005	1 556
61 Leather, leather manufactures, and dressed furskins, n.e.s.(a)	21	1	72	5	65	5
62 Rubber manufactures, n.e.s.(b)	7	52	38	202	37	201
63 Cork and wood manufactures (excluding furniture)(a)	4	11	10	39	13	47
64 Paper, paperboard, and articles of paper pulp, of paper or of paperboard(b)	7	82	3	313	23	306
65 Textile yarn, fabrics, made-up articles, n.e.s., and related products(a)(b)	14	52	58	258	52	233
66 Non-metallic mineral manufactures, n.e.s.(a)(b)	36	34	100	144	155	140
67 Iron and steel(a)(b)	105	23	353	94	343	85
68 Non-ferrous metals(a)(b)	85	20	236	201	228	89
69 Manufactures of metals, n.e.s.(a)(b)	30	121	105	473	89	449
7 Machinery and transport equipment(a)(b)	502	3 362	2 082	11 155	1 996	12 875
71 Power generating machinery and equipment	26	299	104	1 073	113	1 236
72 Machinery specialised for particular industries(a)(b)	73	345	222	1 372	217	1 298
73 Metal working machinery	35	19	53	81	95	77
74 General industrial machinery and equipment, n.e.s. and machine parts, n.e.s.(a)(b)	41	358	138	1 623	149	1 453
75 Office machines and automatic data processing machines	56	484	324	1 847	254	1 683
76 Telecommunications and sound recording and reproducing apparatus and equipment(a)	27	437	81	721	79	1 308
77 Electrical machinery, apparatus, appliances, parts (including non-electrical counterparts of electrical domestic equipment)(a)(b)	47	387	162	1 219	215	1 356
78 Road vehicles (including air-cushion vehicles)	116	371	514	1 063	568	1 272
79 Transport equipment (excluding road vehicles)	82	661	484	2 155	306	3 193
8 Miscellaneous manufactured articles(a)(b)	190	881	592	3 299	659	3 409
81 Prefabricated buildings; sanitary, plumbing, heating and lighting fixtures and fittings, n.e.s.	1	9	3	31	4	34
82 Furniture, parts thereof; bedding, mattresses, mattress supports, cushions and similar stuffed furnishings	4	17	11	51	10	55
83 Travel goods, handbags and similar containers	—	4	1	10	—	13
84 Articles of apparel and clothing accessories	15	13	50	53	48	52
85 Footwear(a)	3	4	12	14	10	15
87 Professional, scientific and controlling instruments and apparatus, n.e.s.	74	328	282	1 228	300	1 211
88 Photographic apparatus, equipment and supplies and optical goods, n.e.s.; watches and clocks(b)	38	124	57	433	121	449
89 Miscellaneous manufactured articles, n.e.s.(b)	57	383	175	1 479	165	1 581
9 Commodities and transactions n.e.c. in the SITC(c)	612	196	1 776	865	2 366	1 056
93 Special transactions and commodities not classified according to kind	88	6	368	17	538	19
95 Gold coin whether or not legal tender, and other coin being legal tender	5	—	32	—	26	2
96 Coin (excluding gold coin), not being legal tender	—	—	—	—	3	6
97 Gold, non-monetary (excluding gold ores and concentrates)	—	47	33	411	49	479
98 Combined confidential items of trade and commodities n.e.s.(c)	517	144	1 343	437	1 750	549
Total trade	2 738	5 836	7 984	20 893	9 577	23 003

(a) Excludes export commodities subject to a confidentiality restriction. These are included in Division 98. See paragraph 28 of the Explanatory Notes.

(b) Excludes import commodities subject to a confidentiality restriction. These are included in Division 98. See paragraph 28 of the Explanatory Notes.

(c) Includes export and import commodities subject to a confidentiality restriction. See paragraph 28 of the Explanatory Notes.

Section and Division of the SITC Rev3	JUN QTR 2000		12 MONTHS ENDED JUN 1999		12 MONTHS ENDED JUN 2000	
	<i>Exports</i>	<i>Imports</i>	<i>Exports</i>	<i>Imports</i>	<i>Exports</i>	<i>Imports</i>
	\$m	\$m	\$m	\$m	\$m	\$m
0 Food and live animals(a)(b)	2 662	606	9 130	2 394	9 901	2 498
00 Live animals other than fish, crustaceans, molluscs and aquatic invertebrates	99	31	273	108	380	106
01 Meat and meat preparations	1 092	23	3 366	64	3 915	87
02 Dairy products and birds' eggs	412	48	1 566	172	1 651	185
03 Fish (not marine mammals), crustaceans, molluscs and aquatic invertebrates, and preparations thereof(a)	417	143	1 169	603	1 485	630
04 Cereals and cereal preparations(a)	117	46	872	162	421	170
05 Vegetables and fruit(a)(b)	192	106	804	423	819	452
06 Sugars, sugar preparations and honey(a)	24	13	131	52	120	52
07 Coffee, tea, cocoa, spices and manufactures thereof(b)	44	71	164	353	202	317
08 Feeding stuff for animals (excluding unmilled cereals)(a)(b)	172	28	511	131	594	129
09 Miscellaneous edible products and preparations(a)	94	97	274	324	314	370
1 Beverages and tobacco(a)	191	65	516	232	681	266
11 Beverages	181	40	487	144	648	185
12 Tobacco and tobacco manufactures(a)	10	25	29	88	34	82
2 Crude materials, inedible, except fuels(a)(b)	2 746	427	9 373	1 174	9 725	1 466
21 Hides, skins and furskins, raw(a)	41	—	115	1	131	1
22 Oil seeds and oleaginous fruits	147	18	462	54	715	78
23 Crude rubber (including synthetic and reclaimed)(b)	2	23	7	86	11	84
24 Cork and wood(a)	171	181	669	443	716	567
25 Pulp and waste paper	12	75	25	170	39	219
26 Textile fibres and their wastes (not manufactured into yarn or fabric)(a)	754	29	2 646	102	2 731	118
27 Crude fertilisers (excluding those of Division 56) and crude minerals (excluding coal, petroleum and precious stones)(a)(b)	28	23	102	84	132	89
28 Metalliferous ores and metal scrap(a)	1 544	31	5 200	67	5 076	134
29 Crude animal and vegetable materials, n.e.s.	46	47	147	167	175	176
3 Mineral fuels, lubricants and related materials(a)(b)	3 611	1 692	8 857	3 650	12 147	5 657
32 Coal, coke and briquettes(a)	1 442	1	6 110	22	5 540	16
33 Petroleum, petroleum products and related materials(b)	2 010	1 685	2 458	3 605	5 987	5 617
34 Gas, natural and manufactured(a)	159	7	289	23	620	24
4 Animal and vegetable oils, fats and waxes(a)(b)	56	34	187	156	202	137
41 Animal oils and fats(a)	33	2	97	5	121	6
42 Fixed vegetable fats and oils, crude, refined or fractionated(a)(b)	12	26	49	131	40	109
43 Fats and oils (processed), waxes and inedible mixtures or preparations, of animal or vegetable origin, n.e.s.	10	6	40	21	40	23
5 Chemical and related products, n.e.s.(a)(b)	817	1 380	2 653	5 149	2 994	5 520
51 Organic chemicals(a)(b)	25	274	95	995	92	1 194
52 Inorganic chemicals(a)(b)	76	63	218	295	306	259
53 Dyeing, tanning and colouring materials(b)	139	66	419	236	473	260
54 Medicinal and pharmaceutical products(a)	280	216	866	666	969	801
55 Essential oils and resinoids and perfume materials: toilet, polishing and cleansing preparations(b)	77	119	259	480	298	512
56 Fertilisers (excluding crude)(b)	13	128	30	557	38	462
57 Plastics in primary forms(a)(b)	43	158	200	552	178	625
58 Plastics in non-primary forms(b)	44	156	133	595	157	629
59 Chemical materials and products, n.e.s.(a)(b)	119	200	434	773	483	777

Section and Division of the SITC Rev3	JUN QTR 2000		12 MONTHS ENDED JUN 1999		12 MONTHS ENDED JUN 2000	
	Exports	Imports	Exports	Imports	Exports	Imports
	\$m	\$m	\$m	\$m	\$m	\$m
6 Manufactured goods classified chiefly by material(a)(b)	2 457	2 209	7 659	7 918	8 906	8 540
61 Leather, leather manufactures, and dressed furskins, n.e.s.(a)(b)	42	15	169	61	182	60
62 Rubber manufactures, n.e.s.(b)	28	252	130	931	120	957
63 Cork and wood manufactures (excluding furniture)(a)	34	93	98	284	121	358
64 Paper, paperboard, and articles of paper pulp, of paper or of paperboard(b)	142	315	401	1 189	500	1 315
65 Textile yarn, fabrics, made-up articles, n.e.s., and related products(a)(b)	103	421	386	1 659	401	1 700
66 Non-metallic mineral manufactures, n.e.s.(a)(b)	132	307	415	776	550	1 047
67 Iron and steel(a)(b)	343	245	1 166	937	1 072	1 003
68 Non-ferrous metals(a)(b)	1 497	137	4 381	556	5 450	505
69 Manufactures of metals, n.e.s.(a)(b)	135	425	514	1 525	509	1 594
7 Machinery and transport equipment(a)(b)	1 868	10 106	6 993	33 553	7 471	38 570
71 Power generating machinery and equipment	202	431	584	1 509	735	1 765
72 Machinery specialised for particular industries(a)(b)	212	601	1 051	2 385	773	2 269
73 Metal working machinery(b)	53	71	124	286	174	256
74 General industrial machinery and equipment, n.e.s. and machine parts, n.e.s.(a)(b)	199	771	765	3 419	756	3 297
75 Office machines and automatic data processing machines	276	2 070	1 243	6 515	1 107	7 016
76 Telecommunications and sound recording and reproducing apparatus and equipment(a)(b)	124	1 349	384	3 712	394	4 949
77 Electrical machinery, apparatus, appliances, parts (including non-electrical counterparts of electrical domestic equipment)(a)(b)	237	1 230	833	3 946	892	4 381
78 Road vehicles (including air-cushion vehicles)	388	2 798	1 203	9 234	1 588	10 135
79 Transport equipment (excluding road vehicles)	176	785	805	2 546	1 051	4 502
8 Miscellaneous manufactured articles(a)(b)	710	2 738	2 613	10 451	2 804	11 365
81 Prefabricated buildings; sanitary, plumbing, heating and lighting fixtures and fittings, n.e.s.(b)	14	68	54	207	56	243
82 Furniture, parts thereof; bedding, mattresses, mattress supports, cushions and similar stuffed furnishings	22	186	93	554	104	747
83 Travel goods, handbags and similar containers	3	68	10	281	11	314
84 Articles of apparel and clothing accessories	81	508	289	1 936	294	2 269
85 Footwear(a)	10	127	45	555	41	640
87 Professional, scientific and controlling instruments and apparatus, n.e.s.	174	466	654	1 703	693	1 704
88 Photographic apparatus, equipment and supplies and optical goods, n.e.s.; watches and clocks(b)	166	278	568	1 027	668	1 092
89 Miscellaneous manufactured articles, n.e.s.(b)	241	1 037	899	4 188	937	4 357
9 Commodities and transactions n.e.c. in the SITC(c)	4 563	926	13 374	3 451	16 295	3 729
93 Special transactions and commodities not classified according to kind	467	7	882	25	1 615	27
95 Gold coin whether or not legal tender, and other coin being legal tender	11	—	50	5	55	6
96 Coin (excluding gold coin), not being legal tender	1	—	2	—	6	6
97 Gold, non-monetary (excluding gold ores and concentrates)	1 185	528	3 879	2 276	4 058	2 185
98 Combined confidential items of trade and commodities n.e.s.(c)	2 898	391	8 562	1 144	10 561	1 504
Total trade	19 679	20 184	61 355	68 128	71 125	77 749

(a) Excludes export commodities subject to a confidentiality restriction. These are included in Division 98. See paragraph 28 of the Explanatory Notes.

(b) Excludes import commodities subject to a confidentiality restriction. These are included in Division 98. See paragraph 28 of the Explanatory Notes.

(c) Includes export and import commodities subject to a confidentiality restriction. See paragraph 28 of the Explanatory Notes.

Section and Division of the SITC Rev3	JUN QTR 2000		12 MONTHS ENDED JUN 1999		12 MONTHS ENDED JUN 2000	
	<i>Exports</i>	<i>Imports</i>	<i>Exports</i>	<i>Imports</i>	<i>Exports</i>	<i>Imports</i>
	\$m	\$m	\$m	\$m	\$m	\$m
0 Food and live animals(a)(b)	505	188	1 770	814	2 054	826
00 Live animals other than fish, crustaceans, molluscs and aquatic invertebrates	68	—	199	—	278	—
01 Meat and meat preparations	68	—	186	1	308	1
02 Dairy products and birds' eggs	181	1	771	1	794	3
03 Fish (not marine mammals), crustaceans, molluscs and aquatic invertebrates, and preparations thereof(a)	19	71	56	325	71	336
04 Cereals and cereal preparations(a)	48	18	159	59	165	72
05 Vegetables and fruit(a)(b)	70	24	254	90	261	102
06 Sugars, sugar preparations and honey(a)	3	2	22	7	22	9
07 Coffee, tea, cocoa, spices and manufactures thereof	9	42	30	221	31	186
08 Feeding stuff for animals (excluding unmilled cereals)(a)	17	9	50	41	63	39
09 Miscellaneous edible products and preparations(a)	20	20	44	70	59	77
1 Beverages and tobacco(a)	19	3	49	7	67	7
11 Beverages	12	1	31	3	49	4
12 Tobacco and tobacco manufactures(a)	6	2	18	4	18	4
2 Crude materials, inedible, except fuels(a)(b)	334	93	1 132	243	1 105	306
21 Hides, skins and furskins, raw(a)	1	—	15	—	5	—
22 Oil seeds and oleaginous fruits	7	—	5	—	21	1
23 Crude rubber (including synthetic and reclaimed)(b)	—	13	1	47	3	46
24 Cork and wood(a)	17	39	15	104	42	130
25 Pulp and waste paper	10	23	20	37	28	66
26 Textile fibres and their wastes (not manufactured into yarn or fabric)(a)	225	3	864	10	751	12
27 Crude fertilisers (excluding those of Division 56) and crude minerals (excluding coal, petroleum and precious stones)(a)(b)	5	2	24	5	20	7
28 Metalliferous ores and metal scrap(a)	65	7	178	14	224	22
29 Crude animal and vegetable materials, n.e.s.	3	5	10	26	11	22
3 Mineral fuels, lubricants and related materials(a)(b)	597	1 158	553	2 618	1 412	3 896
32 Coal, coke and briquettes	43	—	125	1	154	1
33 Petroleum, petroleum products and related materials(b)	554	1 153	416	2 604	1 248	3 881
34 Gas, natural and manufactured(a)	—	4	12	14	10	15
4 Animal and vegetable oils, fats and waxes(a)(b)	8	28	39	132	30	113
41 Animal oils and fats(a)	2	—	10	—	10	1
42 Fixed vegetable fats and oils, crude, refined or fractionated(a)(b)	4	24	22	121	14	99
43 Fats and oils (processed), waxes and inedible mixtures or preparations, of animal or vegetable origin, n.e.s.	2	4	6	11	7	13
5 Chemical and related products, n.e.s.(a)(b)	207	180	565	597	698	679
51 Organic chemicals(a)(b)	10	33	32	140	28	125
52 Inorganic chemicals(a)(b)	14	3	50	28	40	17
53 Dyeing, tanning and colouring materials(b)	40	15	107	28	132	47
54 Medicinal and pharmaceutical products(a)	69	12	171	49	249	56
55 Essential oils and resinoids and perfume materials: toilet, polishing and cleansing preparations(b)	16	12	51	41	64	44
56 Fertilisers (excluding crude)	9	20	14	36	18	61
57 Plastics in primary forms(a)(b)	11	39	51	133	46	159
58 Plastics in non-primary forms(b)	13	20	21	65	31	79
59 Chemical materials and products, n.e.s.(a)(b)	25	26	67	78	90	92

Section and Division of the SITC Rev3	JUN QTR 2000		12 MONTHS ENDED JUN 1999		12 MONTHS ENDED JUN 2000	
	<i>Exports</i>	<i>Imports</i>	<i>Exports</i>	<i>Imports</i>	<i>Exports</i>	<i>Imports</i>
	\$m	\$m	\$m	\$m	\$m	\$m
6 Manufactured goods classified chiefly by material(a)(b)	539	346	1 571	1 258	1 865	1 422
61 Leather, leather manufactures, and dressed furskins, n.e.s.(a)(b)	9	2	36	10	59	9
62 Rubber manufactures, n.e.s.(b)	4	28	21	104	16	112
63 Cork and wood manufactures (excluding furniture)(a)	4	39	14	123	16	155
64 Paper, paperboard, and articles of paper pulp, of paper or of paperboard(b)	24	63	62	290	74	319
65 Textile yarn, fabrics, made-up articles, n.e.s., and related products(a)(b)	23	65	72	259	81	260
66 Non-metallic mineral manufactures, n.e.s.(a)(b)	15	66	45	192	52	247
67 Iron and steel(a)(b)	78	30	251	83	235	117
68 Non-ferrous metals(a)(b)	349	15	928	71	1 193	70
69 Manufactures of metals, n.e.s.(a)(b)	33	37	143	125	139	132
7 Machinery and transport equipment(a)(b)	402	1 488	1 406	4 608	1 318	6 253
71 Power generating machinery and equipment	15	14	54	27	53	53
72 Machinery specialised for particular industries(a)	56	14	449	56	200	50
73 Metal working machinery	5	4	20	9	22	11
74 General industrial machinery and equipment, n.e.s. and machine parts, n.e.s.(a)(b)	56	60	234	318	196	349
75 Office machines and automatic data processing machines	52	699	199	2 010	192	2 286
76 Telecommunications and sound recording and reproducing apparatus and equipment(a)(b)	53	247	74	946	119	1 088
77 Electrical machinery, apparatus, appliances, parts (including non-electrical counterparts of electrical domestic equipment)(a)(b)	39	249	155	811	154	826
78 Road vehicles (including air-cushion vehicles)	80	188	103	401	266	686
79 Transport equipment (excluding road vehicles)	45	12	117	30	115	904
8 Miscellaneous manufactured articles(a)(b)	92	350	392	1 419	417	1 450
81 Prefabricated buildings; sanitary, plumbing, heating and lighting fixtures and fittings, n.e.s.(b)	4	4	9	17	15	18
82 Furniture, parts thereof; bedding, mattresses, mattress supports, cushions and similar stuffed furnishings	6	83	18	246	24	355
83 Travel goods, handbags and similar containers	—	3	1	20	1	18
84 Articles of apparel and clothing accessories	5	50	20	181	20	196
85 Footwear(a)	1	17	2	88	2	96
87 Professional, scientific and controlling instruments and apparatus, n.e.s.	16	35	77	120	80	120
88 Photographic apparatus, equipment and supplies and optical goods, n.e.s.; watches and clocks(b)	32	13	158	56	157	61
89 Miscellaneous manufactured articles, n.e.s.(b)	29	145	108	692	118	584
9 Commodities and transactions n.e.c. in the SITC(c)	1 030	127	2 926	671	3 884	709
93 Special transactions and commodities not classified according to kind	26	—	71	1	99	1
95 Gold coin whether or not legal tender, and other coin being legal tender	—	—	1	—	5	—
96 Coin (excluding gold coin), not being legal tender	—	—	—	—	—	—
97 Gold, non-monetary (excluding gold ores and concentrates)	621	52	1 440	441	2 328	392
98 Combined confidential items of trade and commodities n.e.s.(c)	382	74	1 415	229	1 451	316
Total trade	3 732	3 961	10 403	12 367	12 851	15 661

(a) Excludes export commodities subject to a confidentiality restriction. These are included in Division 98. See paragraph 28 of the Explanatory Notes.

(b) Excludes import commodities subject to a confidentiality restriction. These are included in Division 98. See paragraph 28 of the Explanatory Notes.

(c) Includes export and import commodities subject to a confidentiality restriction. See paragraph 28 of the Explanatory Notes.

EXPORTS AND IMPORTS, By Commodity—Developing Countries (DCs)

Section and Division of the SITC Rev3	JUN QTR 2000		12 MONTHS ENDED JUN 1999		12 MONTHS ENDED JUN 2000	
	Exports	Imports	Exports	Imports	Exports	Imports
	\$m	\$m	\$m	\$m	\$m	\$m
0 Food and live animals(a)(b)	1 438	395	5 711	1 484	5 670	1 641
00 Live animals other than fish, crustaceans, molluscs and aquatic invertebrates	154	—	574	2	677	1
01 Meat and meat preparations	268	1	1 016	2	1 079	3
02 Dairy products and birds' eggs	411	4	1 619	8	1 696	10
03 Fish (not marine mammals), crustaceans, molluscs and aquatic invertebrates, and preparations thereof(a)	189	105	586	445	683	468
04 Cereals and cereal preparations(a)	73	32	812	101	289	125
05 Vegetables and fruit(a)(b)	210	81	646	330	756	346
06 Sugars, sugar preparations and honey(a)	19	7	99	25	82	29
07 Coffee, tea, cocoa, spices and manufactures thereof(b)	25	72	87	358	98	313
08 Feeding stuff for animals (excluding unmilled cereals)(a)	41	15	128	69	150	71
09 Miscellaneous edible products and preparations(a)	48	78	143	143	161	274
1 Beverages and tobacco(a)	41	24	132	97	154	103
11 Beverages	30	6	92	29	116	29
12 Tobacco and tobacco manufactures(a)	11	18	40	68	38	74
2 Crude materials, inedible, except fuels(a)(b)	2 030	175	6 045	540	6 713	599
21 Hides, skins and furskins, raw(a)	50	—	116	—	141	—
22 Oil seeds and oleaginous fruits	108	4	337	19	562	16
23 Crude rubber (including synthetic and reclaimed)(b)	1	16	3	53	5	55
24 Cork and wood(a)	40	46	77	119	124	149
25 Pulp and waste paper	13	31	25	72	40	80
26 Textile fibres and their wastes (not manufactured into yarn or fabric)(a)	826	10	2 463	31	2 785	37
27 Crude fertilisers (excluding those of Division 56) and crude minerals (excluding coal, petroleum and precious stones)(a)(b)	9	16	43	81	53	72
28 Metalliferous ores and metal scrap(a)	953	32	2 903	88	2 896	114
29 Crude animal and vegetable materials, n.e.s.	31	21	78	77	108	75
3 Mineral fuels, lubricants and related materials(a)(b)	2 194	1 919	4 956	3 557	7 044	5 888
32 Coal, coke and briquettes(a)	793	—	3 411	6	2 854	8
33 Petroleum, petroleum products and related materials(b)	1 327	1 883	1 397	3 490	3 977	5 772
34 Gas, natural and manufactured(a)	73	37	148	61	212	108
4 Animal and vegetable oils, fats and waxes(a)(b)	53	36	286	170	220	140
41 Animal oils and fats(a)	41	1	208	2	178	3
42 Fixed vegetable fats and oils, crude, refined or fractionated(a)(b)	4	29	52	152	16	119
43 Fats and oils (processed), waxes and inedible mixtures or preparations, of animal or vegetable origin, n.e.s.	7	5	26	16	26	18
5 Chemical and related products, n.e.s.(a)(b)	519	538	1 520	1 667	1 727	1 914
51 Organic chemicals(a)(b)	20	97	52	372	45	395
52 Inorganic chemicals(a)(b)	37	51	142	152	138	168
53 Dyeing, tanning and colouring materials(b)	118	30	325	77	387	106
54 Medicinal and pharmaceutical products(a)	190	33	493	119	607	124
55 Essential oils and resinoids and perfume materials: toilet, polishing and cleansing preparations(b)	33	29	109	105	127	110
56 Fertilisers (excluding crude)(b)	13	109	18	205	25	263
57 Plastics in primary forms(a)(b)	32	77	159	250	129	312
58 Plastics in non-primary forms(b)	30	63	80	225	90	259
59 Chemical materials and products, n.e.s.(a)(b)	47	49	142	162	178	178

Section and Division of the SITC Rev3	JUN QTR 2000		12 MONTHS ENDED JUN 1999		12 MONTHS ENDED JUN 2000	
	Exports	Imports	Exports	Imports	Exports	Imports
	\$m	\$m	\$m	\$m	\$m	\$m
6 Manufactured goods classified chiefly by material(a)(b)	1 618	1 324	4 775	4 622	5 643	5 234
61 Leather, leather manufactures, and dressed furskins, n.e.s.(a)(b)	22	17	104	73	121	79
62 Rubber manufactures, n.e.s.(b)	8	96	42	326	38	361
63 Cork and wood manufactures (excluding furniture)(a)	22	52	60	174	72	209
64 Paper, paperboard, and articles of paper pulp, of paper or of paperboard(b)	69	114	157	495	196	551
65 Textile yarn, fabrics, made-up articles, n.e.s., and related products(a)(b)	81	383	302	1 461	313	1 533
66 Non-metallic mineral manufactures, n.e.s.(a)(b)	42	211	158	634	184	777
67 Iron and steel(a)(b)	224	113	725	378	685	458
68 Non-ferrous metals(a)(b)	1 091	82	2 930	204	3 785	267
69 Manufactures of metals, n.e.s.(a)(b)	59	255	297	877	250	999
7 Machinery and transport equipment(a)(b)	1 175	3 379	3 915	10 605	4 203	13 230
71 Power generating machinery and equipment	131	57	301	138	434	192
72 Machinery specialised for particular industries(a)	123	77	733	227	469	248
73 Metal working machinery(b)	13	26	65	91	55	80
74 General industrial machinery and equipment, n.e.s. and machine parts, n.e.s.(a)(b)	116	179	450	922	433	963
75 Office machines and automatic data processing machines	113	1 272	443	3 647	441	4 164
76 Telecommunications and sound recording and reproducing apparatus and equipment(a)(b)	85	634	267	2 056	250	2 610
77 Electrical machinery, apparatus, appliances, parts (including non-electrical counterparts of electrical domestic equipment)(a)(b)	110	640	414	2 029	380	2 263
78 Road vehicles (including air-cushion vehicles)	407	467	947	1 316	1 523	1 753
79 Transport equipment (excluding road vehicles)	77	26	296	180	220	956
8 Miscellaneous manufactured articles(a)(b)	327	1 615	1 169	6 231	1 316	7 039
81 Prefabricated buildings; sanitary, plumbing, heating and lighting fixtures and fittings, n.e.s.(b)	9	44	33	142	34	178
82 Furniture, parts thereof; bedding, mattresses, mattress supports, cushions and similar stuffed furnishings	13	154	39	447	53	642
83 Travel goods, handbags and similar containers	1	68	3	291	3	320
84 Articles of apparel and clothing accessories	40	535	125	2 096	134	2 426
85 Footwear(a)	3	130	7	574	13	655
87 Professional, scientific and controlling instruments and apparatus, n.e.s.	68	71	201	247	283	256
88 Photographic apparatus, equipment and supplies and optical goods, n.e.s.; watches and clocks(b)	115	75	431	301	478	339
89 Miscellaneous manufactured articles, n.e.s.(b)	78	538	330	2 133	318	2 222
9 Commodities and transactions n.e.c. in the SITC(c)	3 159	556	10 304	2 091	11 637	1 960
93 Special transactions and commodities not classified according to kind	319	—	334	2	865	2
95 Gold coin whether or not legal tender, and other coin being legal tender	4	—	22	—	22	3
96 Coin (excluding gold coin), not being legal tender	—	—	1	—	2	—
97 Gold, non-monetary (excluding gold ores and concentrates)	1 104	341	3 918	1 507	3 804	1 180
98 Combined confidential items of trade and commodities n.e.s.(c)	1 732	215	6 030	581	6 944	775
Total trade	12 553	9 960	38 814	31 065	44 326	37 746

(a) Excludes export commodities subject to a confidentiality restriction. These are included in Division 98. See paragraph 28 of the Explanatory Notes.

(b) Excludes import commodities subject to a confidentiality restriction. These are included in Division 98. See paragraph 28 of the Explanatory Notes.

(c) Includes export and import commodities subject to a confidentiality restriction. See paragraph 28 of the Explanatory Notes.

EXPORTS AND IMPORTS, By Commodity—European Union (EU)

Section and Division of the SITC Rev3	JUN QTR 2000		12 MONTHS ENDED JUN 1999		12 MONTHS ENDED JUN 2000	
	Exports	Imports	Exports	Imports	Exports	Imports
	\$m	\$m	\$m	\$m	\$m	\$m
0 Food and live animals(a)(b)	144	167	536	836	515	834
00 Live animals other than fish, crustaceans, molluscs and aquatic invertebrates	1	3	2	14	4	22
01 Meat and meat preparations	54	22	227	7	202	66
02 Dairy products and birds' eggs	33	18	95	75	124	68
03 Fish (not marine mammals), crustaceans, molluscs and aquatic invertebrates, and preparations thereof(a)	14	8	44	33	43	33
04 Cereals and cereal preparations(a)	2	12	18	65	7	74
05 Vegetables and fruit(a)	30	30	118	123	101	125
06 Sugars, sugar preparations and honey(a)	3	8	13	42	11	46
07 Coffee, tea, cocoa, spices and manufactures thereof(b)	1	33	3	131	4	153
08 Feeding stuff for animals (excluding unmilled cereals)(a)(b)	2	2	9	5	6	9
09 Miscellaneous edible products and preparations(a)	4	32	7	342	13	239
1 Beverages and tobacco(a)	219	86	630	339	791	382
11 Beverages	219	76	622	294	791	341
12 Tobacco and tobacco manufactures(a)	—	10	8	45	—	41
2 Crude materials, inedible, except fuels(a)(b)	673	42	2 290	202	2 290	184
21 Hides, skins and furskins, raw(a)	10	1	76	—	38	2
22 Oil seeds and oleaginous fruits	2	—	147	1	21	1
23 Crude rubber (including synthetic and reclaimed)(b)	—	6	—	20	1	23
24 Cork and wood(a)	4	10	13	20	12	32
25 Pulp and waste paper	—	1	—	3	—	3
26 Textile fibres and their wastes (not manufactured into yarn or fabric)(a)	264	7	1 017	27	1 013	28
27 Crude fertilisers (excluding those of Division 56) and crude minerals (excluding coal, petroleum and precious stones)(a)(b)	17	4	38	19	50	18
28 Metalliferous ores and metal scrap(a)	359	1	937	43	1 104	6
29 Crude animal and vegetable materials, n.e.s.	15	12	62	68	51	70
3 Mineral fuels, lubricants and related materials(a)(b)	393	6	1 527	20	1 288	20
32 Coal, coke and briquettes(a)	393	1	1 517	3	1 287	3
33 Petroleum, petroleum products and related materials(b)	—	5	10	17	1	17
34 Gas, natural and manufactured(a)	—	—	—	—	—	—
4 Animal and vegetable oils, fats and waxes(a)(b)	5	30	8	98	15	112
41 Animal oils and fats(a)	4	—	5	2	12	1
42 Fixed vegetable fats and oils, crude, refined or fractionated(a)(b)	—	27	1	90	3	99
43 Fats and oils (processed), waxes and inedible mixtures or preparations, of animal or vegetable origin, n.e.s.	—	3	2	5	1	12
5 Chemical and related products, n.e.s.(a)(b)	206	1 278	449	4 542	729	4 906
51 Organic chemicals(a)(b)	4	301	42	1 026	18	1 118
52 Inorganic chemicals(a)(b)	21	20	27	102	72	88
53 Dyeing, tanning and colouring materials(b)	14	43	51	178	40	180
54 Medicinal and pharmaceutical products(a)	146	611	258	1 995	526	2 255
55 Essential oils and resinoids and perfume materials: toilet, polishing and cleansing preparations(b)	5	87	20	336	22	365
56 Fertilisers (excluding crude)(b)	—	10	1	59	—	49
57 Plastics in primary forms(a)(b)	1	52	4	224	5	217
58 Plastics in non-primary forms(b)	3	69	18	256	16	260
59 Chemical materials and products, n.e.s.(a)(b)	11	83	28	366	29	374

Section and Division of the SITC Rev3	JUN QTR 2000		12 MONTHS ENDED JUN 1999		12 MONTHS ENDED JUN 2000	
	<i>Exports</i>	<i>Imports</i>	<i>Exports</i>	<i>Imports</i>	<i>Exports</i>	<i>Imports</i>
	\$m	\$m	\$m	\$m	\$m	\$m
6 Manufactured goods classified chiefly by material(a)(b)	256	878	1 016	3 446	992	3 488
61 Leather, leather manufactures, and dressed furskins, n.e.s.(a)(b)	7	11	228	24	138	29
62 Rubber manufactures, n.e.s.(b)	9	59	33	292	33	253
63 Cork and wood manufactures (excluding furniture)(a)	3	46	16	156	9	187
64 Paper, paperboard, and articles of paper pulp, of paper or of paperboard(b)	2	186	5	741	11	775
65 Textile yarn, fabrics, made-up articles, n.e.s., and related products(a)(b)	18	111	60	425	63	429
66 Non-metallic mineral manufactures, n.e.s.(a)(b)	16	160	61	591	69	607
67 Iron and steel(a)(b)	71	85	208	344	160	328
68 Non-ferrous metals(a)(b)	118	55	363	191	460	200
69 Manufactures of metals, n.e.s.(a)(b)	12	165	44	681	48	679
7 Machinery and transport equipment(a)(b)	426	3 005	1 341	10 439	1 567	10 832
71 Power generating machinery and equipment	17	203	83	715	139	701
72 Machinery specialised for particular industries(a)(b)	38	405	106	1 673	116	1 497
73 Metal working machinery(b)	15	43	34	165	42	154
74 General industrial machinery and equipment, n.e.s. and machine parts, n.e.s.(a)(b)	43	419	143	2 059	146	1 739
75 Office machines and automatic data processing machines	26	146	141	515	133	507
76 Telecommunications and sound recording and reproducing apparatus and equipment(a)(b)	29	490	72	1 009	94	1 629
77 Electrical machinery, apparatus, appliances, parts (including non-electrical counterparts of electrical domestic equipment)(a)(b)	81	378	268	1 495	312	1 438
78 Road vehicles (including air-cushion vehicles)	15	638	95	2 548	81	2 417
79 Transport equipment (excluding road vehicles)	163	282	397	261	503	750
8 Miscellaneous manufactured articles(a)(b)	130	757	467	3 017	472	3 085
81 Prefabricated buildings; sanitary, plumbing, heating and lighting fixtures and fittings, n.e.s.	2	35	9	89	7	119
82 Furniture, parts thereof; bedding, mattresses, mattress supports, cushions and similar stuffed furnishings	3	54	8	215	10	226
83 Travel goods, handbags and similar containers	—	15	1	57	1	67
84 Articles of apparel and clothing accessories	6	41	20	165	20	159
85 Footwear(a)	1	23	5	158	3	141
87 Professional, scientific and controlling instruments and apparatus, n.e.s.	59	198	185	734	222	777
88 Photographic apparatus, equipment and supplies and optical goods, n.e.s.; watches and clocks(b)	7	66	39	225	26	243
89 Miscellaneous manufactured articles, n.e.s.(b)	51	324	201	1 374	182	1 353
9 Commodities and transactions n.e.c. in the SITC(c)	851	109	3 364	388	3 379	523
93 Special transactions and commodities not classified according to kind	8	5	22	12	395	12
95 Gold coin whether or not legal tender, and other coin being legal tender	3	—	39	1	16	1
96 Coin (excluding gold coin), not being legal tender	—	—	2	—	2	—
97 Gold, non-monetary (excluding gold ores and concentrates)	108	1	1 759	19	769	149
98 Combined confidential items of trade and commodities n.e.s.(c)	732	103	1 542	356	2 197	360
Total trade	3 302	6 358	11 629	23 327	12 039	24 366

(a) Excludes export commodities subject to a confidentiality restriction. These are included in Division 98. See paragraph 28 of the Explanatory Notes.

(b) Excludes import commodities subject to a confidentiality restriction. These are included in Division 98. See paragraph 28 of the Explanatory Notes.

(c) Includes export and import commodities subject to a confidentiality restriction. See paragraph 28 of the Explanatory Notes.

EXPORTS, By State(a)

State	June quarter 1999	September quarter 1999	December quarter 1999	March quarter 2000	June quarter 2000
	\$m	\$m	\$m	\$m	\$m
Australian produce	19 174	20 680	23 075	22 584	25 181
New South Wales	4 244	4 624	4 707	4 484	5 118
Victoria	4 053	4 068	5 357	4 735	4 865
Queensland	3 778	4 219	4 210	3 699	4 519
South Australia	1 323	1 542	1 668	1 440	1 530
Western Australia	4 823	5 364	5 988	6 652	7 460
Tasmania	580	424	543	615	637
Northern Territory	274	325	481	838	888
Australian Capital Territory	6	9	10	7	7
State not available for publication(b)(c)	92	107	111	114	156
Re-exports	1 119	1 219	1 755	1 286	1 475
Total trade	20 293	21 899	24 830	23 871	26 656

(a) State in which the final stage of production or manufacture occurs.

(c) Exports of Alumina to Bahrain, Egypt and Iceland are excluded from the State totals and included in the 'State not available for publication' category.

(b) Includes \$45 million of exports for June 2000 which cannot yet be allocated by State. These shipments will be appropriately classified as more details become available.

IMPORTS, By State(a)

State	June quarter 1999 \$m	September quarter 1999 \$m	December quarter 1999 \$m	March quarter 2000 \$m	June quarter 2000 \$m
New South Wales	10 583	11 401	12 012	11 546	13 010
Victoria	7 375	8 187	8 827	8 238	8 503
Queensland	2 602	3 006	3 195	3 132	3 341
South Australia	899	987	1 097	1 090	1 144
Western Australia	1 988	2 203	2 595	2 203	2 518
Tasmania	80	114	96	105	124
Northern Territory	82	117	1 016	106	160
Australian Capital Territory	9	2	1	3	3
Total trade	23 619	26 017	28 839	26 423	28 803

(a) State in which the goods were released from
Customs control. See paragraph 25 of the
Explanatory Notes for further details.

EXPORTS, By Industry of Origin (ANZSIC)

Australian and New Zealand Standard Industrial Classification (ANZSIC) Division/Subdivision	June quarter 1999	September quarter 1999	December quarter 1999	March quarter 2000	June quarter 2000
	\$m	\$m	\$m	\$m	\$m
A Agriculture, forestry and fishing	2 404	2 470	2 600	2 752	2 719
01 Agriculture	1 757	1 726	2 040	2 346	2 020
02 Services to agriculture; hunting and trapping	475	545	345	181	468
03 Forestry and logging	18	13	22	18	26
04 Commercial fishing	154	186	193	207	204
B Mining	4 510	5 101	5 467	5 926	7 053
11 Coal mining	2 042	2 093	2 001	1 989	2 254
12 Oil and gas extraction	734	1 167	1 542	2 249	2 485
13 Metal ore mining	1 688	1 788	1 858	1 636	2 248
14 Other mining	47	52	65	52	67
C Manufacturing	12 656	13 160	15 090	14 047	15 631
21 Food, beverage and tobacco	2 954	3 087	3 451	3 130	3 574
22 Textile, clothing, footwear and leather	595	634	646	609	696
23 Wood and paper products	321	310	330	363	397
24 Printing, publishing and recorded media	116	118	136	116	116
25 Petroleum, coal, chemical and associated products	1 519	1 562	1 780	1 678	1 861
26 Non-metallic mineral products	74	77	81	74	82
27 Metal products	3 846	3 953	4 394	4 775	5 219
28 Machinery and equipment	3 050	3 202	4 060	3 124	3 508
29 Other manufacturing	180	217	211	178	179
Other industries(a)(b)	724	1 168	1 673	1 145	1 253
Total trade	20 293	21 899	24 830	23 871	26 656

(a) Includes \$45 million of exports for June 2000 which cannot yet be allocated by industry of origin.

(b) Includes commodities subject to a confidentiality restriction. See paragraph 28 of the Explanatory Notes.

IMPORTS, By Industry of Origin (ANZSIC)

Australian and New Zealand Standard Industrial Classification (ANZSIC) Division/Subdivision	June quarter 1999	September quarter 1999	December quarter 1999	March quarter 2000	June quarter 2000
	\$m	\$m	\$m	\$m	\$m
A Agriculture, forestry and fishing	199	196	244	278	251
01 Agriculture	169	170	179	193	164
02 Services to agriculture; hunting and trapping	2	3	3	2	4
03 Forestry and logging	1	1	2	1	1
04 Commercial fishing	26	22	61	82	82
B Mining	1 090	1 378	1 722	1 293	1 977
11 Coal mining	3	3	3	3	2
12 Oil and gas extraction	1 039	1 294	1 629	1 233	1 902
13 Metal ore mining	23	48	44	21	36
14 Other mining	24	33	45	36	38
C Manufacturing	22 239	24 363	26 766	24 764	26 468
21 Food, beverage and tobacco	996	1 118	1 230	1 104	1 067
22 Textile, clothing, footwear and leather	1 376	1 868	1 622	1 795	1 568
23 Wood and paper products	700	817	896	892	941
24 Printing, publishing and recorded media	505	523	545	471	485
25 Petroleum, coal, chemical and associated products	3 732	3 805	4 169	4 356	4 476
26 Non-metallic mineral products	311	346	360	344	382
27 Metal products	1 508	1 744	2 264	1 944	1 957
28 Machinery and equipment	12 524	13 291	14 807	13 206	14 826
29 Other manufacturing	586	851	874	651	764
Other industries(a)	91	80	107	88	107
Total trade	23 619	26 017	28 839	26 423	28 803

(a) Includes commodities subject to a confidentiality restriction. See paragraph 28 of the Explanatory Notes.

EXPORTS, By Broad Economic Categories (BEC)

Broad Economic Categories	June quarter 1999	September quarter 1999	December quarter 1999	March quarter 2000	June quarter 2000
	\$m	\$m	\$m	\$m	\$m
Food and beverages	4 137	4 265	4 661	4 758	4 807
<i>Primary</i>	1 706	1 679	1 805	2 213	1 952
Mainly for industry	1 259	1 182	1 351	1 717	1 382
Mainly for household consumption	447	497	454	496	569
<i>Processed</i>	2 431	2 586	2 856	2 545	2 855
Mainly for industry	251	209	289	279	247
Mainly for household consumption	2 180	2 377	2 567	2 266	2 608
Industrial supplies not elsewhere specified	8 465	8 933	9 537	9 402	11 006
Primary	3 221	3 398	3 621	3 136	4 159
Processed	5 244	5 535	5 916	6 266	6 847
Fuels and lubricants	3 206	3 764	4 134	4 826	5 340
Primary	2 399	2 766	2 952	3 515	3 958
<i>Processed</i>	807	998	1 182	1 310	1 382
Motor spirit	98	115	82	110	92
Other	709	883	1 099	1 200	1 290
Capital goods (except transport equipment), and parts and accessories thereof	1 734	1 897	1 880	1 671	1 956
Capital goods (except transport equipment)	803	984	912	827	994
Parts and accessories	931	913	968	844	962
Transport equipment and parts and accessories thereof	1 123	1 039	1 409	1 150	1 233
Passenger motor cars	297	390	631	445	457
<i>Other</i>	372	109	209	231	228
Industrial	341	74	180	192	179
Non-industrial	31	35	29	39	49
Parts and accessories	454	541	569	473	548
Consumer goods not elsewhere specified	931	916	1 035	930	1 033
Durable	189	170	178	169	157
Semi-durable	230	237	246	216	252
Non-durable	512	509	611	545	623
Goods not elsewhere specified(a)(b)	697	1 084	2 175	1 134	1 281
Total trade	20 293	21 899	24 830	23 871	26 656

(a) Includes commodities subject to a confidentiality restriction. See paragraph 28 of the Explanatory Notes.

(b) Includes \$45 million of exports for June 2000 which cannot yet be allocated by commodity.

IMPORTS, By Broad Economic Categories (BEC)

Broad Economic Categories	June quarter 1999	September quarter 1999	December quarter 1999	March quarter 2000	June quarter 2000
	\$m	\$m	\$m	\$m	\$m
Food and beverages	1 017	1 136	1 257	1 139	1 072
<i>Primary</i>	235	240	270	247	224
Mainly for industry	75	67	58	71	55
Mainly for household consumption	160	172	212	176	170
<i>Processed</i>	782	896	987	892	848
Mainly for industry	102	117	104	94	98
Mainly for household consumption	679	780	883	797	750
Industrial supplies not elsewhere specified	5 663	6 080	6 977	6 604	6 786
Primary	212	250	314	267	279
Processed	5 451	5 830	6 663	6 336	6 507
Fuels and lubricants	1 269	1 518	1 965	1 628	2 411
Primary	1 030	1 264	1 605	1 218	1 864
<i>Processed</i>	239	253	360	410	547
Motor spirit	34	5	20	5	15
Other	205	249	341	404	531
Capital goods (except transport equipment), and parts and accessories thereof	7 290	7 484	8 475	7 518	8 550
Capital goods (except transport equipment)	4 990	5 120	6 109	5 084	5 763
Parts and accessories	2 300	2 364	2 365	2 434	2 787
Transport equipment and parts and accessories thereof	4 404	4 813	5 131	4 840	5 266
Passenger motor cars	1 661	1 830	1 637	1 547	1 897
<i>Other</i>	1 056	1 307	1 843	1 477	1 410
Industrial	897	1 082	1 610	1 297	1 240
Non-industrial	159	225	234	180	170
Parts and accessories	1 687	1 676	1 650	1 816	1 959
Consumer goods not elsewhere specified	3 901	4 879	4 966	4 558	4 628
Durable	1 049	1 250	1 471	1 113	1 292
Semi-durable	1 436	1 918	1 805	1 780	1 646
Non-durable	1 416	1 711	1 690	1 665	1 689
Goods not elsewhere specified(a)	75	107	69	137	91
Total trade	23 619	26 017	28 839	26 423	28 803

(a) Includes commodities subject to a confidentiality restriction. See paragraph 28 of the Explanatory Notes.

HISTORICAL EXPORTS, By Commodity

	1988– 1989	1989– 1990	1990– 1991	1991– 1992	1992– 1993	1993– 1994
Section and Division of the SITC Rev3	\$m	\$m	\$m	\$m	\$m	\$m
0 Food and live animals(a)	8 523	9 884	9 252	9 716	11 679	12 967
00 Live animals other than fish, crustaceans, molluscs and aquatic invertebrates	297	193	160	209	247	323
01 Meat and meat preparations	2 275	2 942	3 180	3 436	3 744	4 044
02 Dairy products and birds' eggs	596	709	721	815	1 102	1 287
03 Fish (not marine mammals), crustaceans, molluscs and aquatic invertebrates, and preparations thereof	611	674	720	832	952	1 115
04 Cereals and cereal preparations(a)	2 828	3 301	2 438	2 353	2 953	3 206
05 Vegetables and fruit	537	536	628	728	872	932
06 Sugars, sugar preparations and honey	935	1 103	948	747	1 074	1 316
07 Coffee, tea, cocoa, spices and manufactures thereof	68	68	88	97	125	166
08 Feeding stuff for animals (excluding unmilled cereals)(a)	278	257	257	356	467	385
09 Miscellaneous edible products and preparations	98	100	113	145	144	194
1 Beverages and tobacco	247	242	310	366	417	506
11 Beverages	226	225	289	346	385	474
12 Tobacco and tobacco manufactures	21	17	21	21	32	32
2 Crude materials, inedible, except fuels(a)	14 135	13 537	13 398	13 617	13 112	12 917
21 Hides, skins and furskins, raw	495	575	413	362	388	392
22 Oil seeds and oleaginous fruits	70	50	48	63	80	121
23 Crude rubber (including synthetic and reclaimed)	16	8	9	9	11	10
24 Cork and wood	430	396	437	444	465	519
25 Pulp and waste paper	36	25	28	7	12	16
26 Textile fibres and their wastes (not manufactured into yarn or fabric)	6 274	4 739	3 745	4 614	4 017	3 977
27 Crude fertilisers (excluding those of Division 56) and crude minerals (excluding coal, petroleum and precious stones)	232	222	263	297	369	358
28 Metalliferous ores and metal scrap(a)	6 456	7 375	8 296	7 639	7 572	7 315
29 Crude animal and vegetable materials, n.e.s.	126	148	159	181	197	208
3 Mineral fuels, lubricants and related materials	6 434	8 419	10 706	10 878	12 102	11 116
32 Coal, coke and briquettes	4 805	5 933	6 481	6 948	7 623	7 255
33 Petroleum, petroleum products and related materials	1 468	1 996	3 220	2 912	3 244	2 676
34 Gas, natural and manufactured	161	489	1 006	1 017	1 236	1 185
4 Animal and vegetable oils, fats and waxes(a)	124	118	138	136	192	207
41 Animal oils and fats	103	106	118	115	156	170
42 Fixed vegetable fats & oils, crude, refined or fractionated(a)	11	2	4	3	4	7
43 Fats and oils (processed), waxes and inedible mixtures or preparations, of animal or vegetable origin, n.e.s.	10	11	16	18	31	31
5 Chemical and related products, n.e.s.(a)	1 076	1 261	1 377	1 662	1 996	2 351
51 Organic chemicals(a)	93	89	113	89	88	81
52 Inorganic chemicals(a)	91	164	201	229	197	257
53 Dyeing, tanning and colouring materials	148	262	186	241	328	363
54 Medicinal and pharmaceutical products(a)	235	270	321	456	564	701
55 Essential oils and resinoids and perfume materials: toilet, polishing and cleansing preparations	94	89	124	132	172	208
56 Fertilisers (excluding crude)	8	10	19	14	12	19
57 Plastics in primary forms(a)	151	134	161	189	210	201
58 Plastics in non-primary forms	60	66	77	86	100	113
59 Chemical materials and products, n.e.s.	196	177	175	226	324	408

Section and Division of the SITC Rev3	1994–	1995–	1996–	1997–	1998–	1999–
	1995	1996	1997	1998	1999	2000
	\$m	\$m	\$m	\$m	\$m	\$m
0 Food and live animals(a)	12 565	15 272	16 311	16 046	15 503	16 802
00 Live animals other than fish, crustaceans, molluscs and aquatic invertebrates	452	660	706	631	615	733
01 Meat and meat preparations	3 661	3 296	2 958	3 731	4 007	4 459
02 Dairy products and birds' eggs	1 413	1 673	1 759	1 907	2 226	2 382
03 Fish (not marine mammals), crustaceans, molluscs and aquatic invertebrates, and preparations thereof(a)	1 144	1 114	1 087	1 177	1 221	1 536
04 Cereals and cereal preparations(a)	2 522	4 929	5 954	5 098	5 001	4 939
05 Vegetables and fruit(a)	873	1 008	1 147	1 133	1 142	1 304
06 Sugars, sugar preparations and honey(a)	1 729	1 710	1 695	1 341	184	173
07 Coffee, tea, cocoa, spices and manufactures thereof	174	193	191	183	190	232
08 Feeding stuff for animals (excluding unmilled cereals)(a)	387	458	531	540	598	676
09 Miscellaneous edible products and preparations	209	231	283	304	318	367
1 Beverages and tobacco	551	648	782	1 059	1 240	1 570
11 Beverages	508	605	715	994	1 176	1 513
12 Tobacco and tobacco manufactures	44	43	67	65	64	57
2 Crude materials, inedible, except fuels(a)	14 073	14 752	15 615	17 878	17 173	18 369
21 Hides, skins and furskins, raw(a)	487	504	505	572	393	413
22 Oil seeds and oleaginous fruits	110	206	200	375	700	809
23 Crude rubber (including synthetic and reclaimed)	12	11	10	8	9	13
24 Cork and wood	627	624	618	720	686	778
25 Pulp and waste paper	44	27	13	19	26	42
26 Textile fibres and their wastes (not manufactured into yarn or fabric)(a)	4 595	4 065	4 619	5 105	4 076	4 293
27 Crude fertilisers (excluding those of Division 56) and crude minerals (excluding coal, petroleum and precious stones)(a)	367	426	378	417	416	441
28 Metalliferous ores and metal scrap(a)	7 604	8 666	9 051	10 422	10 614	11 308
29 Crude animal and vegetable materials, n.e.s.	226	223	220	241	253	271
3 Mineral fuels, lubricants and related materials	11 242	12 591	13 705	15 401	14 146	18 066
32 Coal, coke and briquettes	6 938	7 840	8 005	9 587	9 288	8 347
33 Petroleum, petroleum products and related materials	2 949	3 188	3 805	3 846	3 131	7 129
34 Gas, natural and manufactured	1 355	1 562	1 895	1 968	1 727	2 590
4 Animal and vegetable oils, fats and waxes(a)	263	238	232	333	379	302
41 Animal oils and fats(a)	220	197	184	230	257	212
42 Fixed vegetable fats & oils, crude, refined or fractionated(a)	4	11	10	55	70	43
43 Fats and oils (processed), waxes and inedible mixtures or preparations, of animal or vegetable origin, n.e.s.	38	29	38	48	52	47
5 Chemical and related products, n.e.s.(a)	2 679	3 015	3 045	3 298	3 585	4 193
51 Organic chemicals(a)	84	87	116	137	168	128
52 Inorganic chemicals(a)	309	365	317	327	315	453
53 Dyeing, tanning and colouring materials	402	435	407	497	522	550
54 Medicinal and pharmaceutical products(a)	771	894	979	1 144	1 333	1 714
55 Essential oils and resinoids and perfume materials: toilet, polishing and cleansing preparations	258	300	296	291	301	343
56 Fertilisers (excluding crude)(a)	24	26	24	19	34	45
57 Plastics in primary forms(a)	283	326	297	277	243	210
58 Plastics in non-primary forms	143	159	154	161	168	192
59 Chemical materials and products, n.e.s.	405	423	455	443	502	558

Section and Division of the SITC Rev3	1988–	1989–	1990–	1991–	1992–	1993–
	1989	1990	1991	1992	1993	1994
	\$m	\$m	\$m	\$m	\$m	\$m
6 Manufactured goods classified chiefly by material(a)	5 845	6 073	6 404	6 690	7 341	7 911
61 Leather, leather manufactures, and dressed furskins, n.e.s.	148	167	180	221	284	368
62 Rubber manufactures, n.e.s.	64	65	65	79	108	120
63 Cork and wood manufactures (excluding furniture)(a)	11	23	37	63	66	92
64 Paper, paperboard, and articles of paper pulp, of paper or of paperboard(a)	124	162	188	212	259	258
65 Textile yarn, fabrics, made-up articles, n.e.s., and related products	153	179	210	236	307	385
66 Non-metallic mineral manufactures, n.e.s.(a)	356	460	507	616	558	666
67 Iron and steel	492	767	981	1 144	1 211	1 496
68 Non-ferrous metals(a)	4 176	3 882	3 758	3 558	3 996	3 900
69 Manufactures of metals, n.e.s.	321	369	477	561	551	625
7 Machinery and transport equipment	2 780	3 684	4 630	5 033	6 415	7 502
71 Power generating machinery and equipment	326	428	543	610	615	586
72 Machinery specialised for particular industries	340	423	517	535	695	822
73 Metal working machinery	37	69	82	84	105	92
74 General industrial machinery and equipment, n.e.s. and machine parts, n.e.s.	341	384	475	536	719	891
75 Office machines and automatic data processing machines	417	564	720	832	995	1 370
76 Telecommunications and sound recording and reproducing apparatus and equipment	167	238	320	307	502	674
77 Electrical machinery, apparatus, appliances, parts (including non-electrical counterparts of electrical domestic equipment)	293	363	470	595	763	968
78 Road vehicles (including air-cushion vehicles)	420	595	847	770	989	1 074
79 Transport equipment (excluding road vehicles)	440	619	657	765	1 031	1 024
8 Miscellaneous manufactured articles	1 050	1 381	1 319	1 619	1 887	2 106
81 Prefabricated buildings; sanitary, plumbing, heating and lighting fixtures and fittings, n.e.s.	28	30	43	72	63	45
82 Furniture, parts thereof; bedding, mattresses, mattress supports, cushions and similar stuffed furnishings	36	44	34	42	64	71
83 Travel goods, handbags and similar containers	5	6	5	5	7	9
84 Articles of apparel and clothing accessories	62	114	130	154	199	247
85 Footwear	16	24	24	30	41	61
87 Professional, scientific and controlling instruments and apparatus, n.e.s.	199	255	276	329	395	416
88 Photographic apparatus, equipment and supplies and optical goods, n.e.s.; watches and clocks	260	231	255	287	397	460
89 Miscellaneous manufactured articles, n.e.s.	444	676	553	701	722	798
9 Commodities and transactions n.e.c. in the SITC(b)	3 794	4 479	4 865	5 309	5 562	6 965
93 Special transactions and commodities not classified according to kind	147	185	174	211	219	348
95 Gold coin whether or not legal tender, and other coin being legal tender	234	283	230	300	267	253
96 Coin (excluding gold coin), not being legal tender	1	2	1	—	1	1
97 Gold, non-monetary (excluding gold ores and concentrates)	2 491	2 872	3 672	4 023	4 315	5 269
98 Combined confidential items of trade and commodities n.e.s.(b)	921	1 138	787	775	759	1 095
Total trade	44 007	49 078	52 399	55 027	60 702	64 548

HISTORICAL EXPORTS, By Commodity *continued*

Section and Division of the SITC Rev3	1994– 1995	1995– 1996	1996– 1997	1997– 1998	1998– 1999	1999– 2000
	\$m	\$m	\$m	\$m	\$m	\$m
6 Manufactured goods classified chiefly by material(a)	9 022	9 844	9 257	10 541	10 173	12 313
61 Leather, leather manufactures, and dressed furskins, n.e.s.	515	463	470	518	450	460
62 Rubber manufactures, n.e.s.	146	157	150	169	177	169
63 Cork and wood manufactures (excluding furniture)(a)	98	104	103	113	124	138
64 Paper, paperboard, and articles of paper pulp, of paper or of paperboard(a)	267	296	394	430	429	542
65 Textile yarn, fabrics, made-up articles, n.e.s., and related products	465	553	583	615	603	598
66 Non-metallic mineral manufactures, n.e.s.(a)	739	746	716	791	735	965
67 Iron and steel(a)	1 580	1 757	1 623	1 858	1 542	1 407
68 Non-ferrous metals	4 518	5 043	4 434	5 316	5 444	7 398
69 Manufactures of metals, n.e.s.	694	725	785	731	670	636
7 Machinery and transport equipment(a)	8 138	9 720	10 683	11 088	10 286	11 606
71 Power generating machinery and equipment	732	826	914	986	714	920
72 Machinery specialised for particular industries	924	1 078	1 160	1 161	1 382	1 109
73 Metal working machinery	140	163	207	210	191	243
74 General industrial machinery and equipment, n.e.s. and machine parts, n.e.s.(a)	943	1 143	1 194	1 087	1 032	1 038
75 Office machines and automatic data processing machines	1 589	1 903	1 627	1 725	1 459	1 312
76 Telecommunications and sound recording and reproducing apparatus and equipment	541	719	648	1 091	741	1 180
77 Electrical machinery, apparatus, appliances, parts (including non-electrical counterparts of electrical domestic equipment)(a)	1 222	1 394	1 297	1 273	1 273	1 321
78 Road vehicles (including air-cushion vehicles)	1 081	1 199	1 826	1 729	2 091	2 811
79 Transport equipment (excluding road vehicles)	965	1 295	1 811	1 826	1 403	1 672
8 Miscellaneous manufactured articles(a)	2 314	2 718	2 827	3 215	3 510	3 829
81 Prefabricated buildings; sanitary, plumbing, heating and lighting fixtures and fittings, n.e.s.	52	76	85	89	80	77
82 Furniture, parts thereof; bedding, mattresses, mattress supports, cushions and similar stuffed furnishings	77	97	97	101	110	123
83 Travel goods, handbags and similar containers	15	14	15	13	13	13
84 Articles of apparel and clothing accessories	304	320	356	372	352	340
85 Footwear(a)	58	66	65	55	65	64
87 Professional, scientific and controlling instruments and apparatus, n.e.s.	442	543	613	802	931	1 066
88 Photographic apparatus, equipment and supplies and optical goods, n.e.s.; watches and clocks	511	562	580	677	708	926
89 Miscellaneous manufactured articles, n.e.s.	857	1 039	1 017	1 106	1 250	1 218
9 Commodities and transactions n.e.c. in the SITC(b)	6 205	7 208	6 476	8 909	9 996	10 206
93 Special transactions and commodities not classified according to kind	413	459	517	571	1 073	2 189
95 Gold coin whether or not legal tender, and other coin being legal tender	206	145	116	137	115	89
96 Coin (excluding gold coin), not being legal tender	1	—	1	2	5	9
97 Gold, non-monetary (excluding gold ores and concentrates)	4 699	5 545	4 717	6 263	6 335	5 090
98 Combined confidential items of trade and commodities n.e.s.(b)	886	1 058	1 125	1 937	2 467	2 829
Total trade	67 052	76 005	78 932	87 768	85 992	97 255

(a) Excludes commodities subject to a confidentiality restriction. These are included in Division 98. See paragraph 28 of the Explanatory Notes for details.

(b) Includes commodities subject to a confidentiality restriction. See paragraph 28 of the Explanatory Notes for details.

HISTORICAL IMPORTS, By Commodity(a)

Section and Division of the SITC Rev3	1988–	1989–	1990–	1991–	1992–	1993–
	1989	1990	1991	1992	1993	1994
	\$m	\$m	\$m	\$m	\$m	\$m
0 Food and live animals	1 833	1 898	1 916	2 058	2 228	2 478
00 Live animals other than fish, crustaceans, molluscs and aquatic invertebrates	156	139	73	60	60	77
01 Meat and meat preparations	30	22	36	43	33	46
02 Dairy products and birds' eggs	91	106	124	135	159	161
03 Fish (not marine mammals), crustaceans, molluscs and aquatic invertebrates, and preparations thereof	437	425	447	474	500	542
04 Cereals and cereal preparations	72	94	105	112	136	143
05 Vegetables and fruit	375	415	383	469	470	515
06 Sugars, sugar preparations and honey	44	51	61	59	77	67
07 Coffee, tea, cocoa, spices and manufactures thereof	353	331	309	309	337	383
08 Feeding stuff for animals (excluding unmilled cereals)	73	69	65	90	67	102
09 Miscellaneous edible products and preparations	202	246	313	306	389	441
1 Beverages and tobacco	366	396	395	392	438	467
11 Beverages	273	304	293	281	319	332
12 Tobacco and tobacco manufactures	92	92	103	111	119	135
2 Crude materials, inedible, except fuels(b)	1 607	1 539	1 220	1 280	1 506	1 595
21 Hides, skins and furskins, raw	12	12	10	6	5	3
22 Oil seeds and oleaginous fruits	50	27	58	61	68	81
23 Crude rubber (including synthetic and reclaimed)	114	93	77	82	104	117
24 Cork and wood	561	518	436	459	571	659
25 Pulp and waste paper	224	243	147	142	157	126
26 Textile fibres and their wastes (not manufactured into yarn or fabric)	179	149	132	141	144	162
27 Crude fertilisers (excluding those of Division 56) and crude minerals (excluding coal, petroleum and precious stones)(b)	281	230	118	139	147	141
28 Metalliferous ores and metal scrap	78	146	132	129	165	141
29 Crude animal and vegetable materials, n.e.s.	107	120	110	123	146	165
3 Mineral fuels, lubricants and related materials	2 014	2 540	3 129	2 731	3 857	3 441
32 Coal, coke and briquettes	11	18	5	9	7	27
33 Petroleum, petroleum products and related materials	1 999	2 505	3 116	2 712	3 829	3 392
34 Gas, natural and manufactured	4	16	8	10	21	23
4 Animal and vegetable oils, fats and waxes(b)	117	124	129	150	190	203
41 Animal oils and fats	3	2	2	2	2	3
42 Fixed vegetable fats and oils, crude, refined or fractionated(b)	102	110	115	134	171	181
43 Fats and oils (processed), waxes and inedible mixtures or preparations, of animal or vegetable origin, n.e.s.(b)	13	12	13	13	17	18
5 Chemical and related products, n.e.s.(b)	4 985	5 235	5 118	5 575	6 625	7 045
51 Organic chemicals(b)	1 160	1 071	1 004	1 095	1 402	1 615
52 Inorganic chemicals(b)	682	767	661	720	655	488
53 Dyeing, tanning and colouring materials(b)	217	233	233	270	320	340
54 Medicinal and pharmaceutical products	694	820	942	1 053	1 393	1 427
55 Essential oils and resinoids and perfume materials: toilet, polishing and cleansing preparations	292	331	338	383	463	527
56 Fertilisers (excluding crude)	214	252	276	312	351	394
57 Plastics in primary forms(b)	717	650	595	602	706	741
58 Plastics in non-primary forms(b)	444	484	439	483	562	635
59 Chemical materials and products, n.e.s.(b)	564	627	629	659	773	878

Section and Division of the SITC Rev3	1994–	1995–	1996–	1997–	1998–	1999–
	1995	1996	1997	1998	1999	2000
	\$m	\$m	\$m	\$m	\$m	\$m
0 Food and live animals	2 821	2 894	2 985	3 460	3 760	3 955
00 Live animals other than fish, crustaceans, molluscs and aquatic invertebrates	101	94	103	125	122	128
01 Meat and meat preparations	47	46	67	63	73	155
02 Dairy products and birds' eggs	173	193	195	219	263	268
03 Fish (not marine mammals), crustaceans, molluscs and aquatic invertebrates, and preparations thereof	609	601	604	691	745	781
04 Cereals and cereal preparations	207	166	178	219	244	266
05 Vegetables and fruit	534	590	588	623	715	737
06 Sugars, sugar preparations and honey	86	86	85	95	106	110
07 Coffee, tea, cocoa, spices and manufactures thereof	505	504	502	651	661	610
08 Feeding stuff for animals (excluding unmilled cereals)	109	94	122	150	146	152
09 Miscellaneous edible products and preparations	451	520	542	626	685	749
1 Beverages and tobacco	522	503	502	575	622	707
11 Beverages	336	339	351	428	453	542
12 Tobacco and tobacco manufactures	186	165	152	146	169	165
2 Crude materials, inedible, except fuels(b)	1 794	1 576	1 487	1 605	1 611	1 848
21 Hides, skins and furskins, raw	4	2	2	2	2	3
22 Oil seeds and oleaginous fruits	133	98	95	81	62	81
23 Crude rubber (including synthetic and reclaimed)	153	155	136	123	110	108
24 Cork and wood	613	421	430	479	477	618
25 Pulp and waste paper	160	191	136	138	202	232
26 Textile fibres and their wastes (not manufactured into yarn or fabric)	188	175	151	145	135	151
27 Crude fertilisers (excluding those of Division 56) and crude minerals (excluding coal, petroleum and precious stones)(b)	171	150	139	175	179	170
28 Metalliferous ores and metal scrap	179	178	174	205	174	203
29 Crude animal and vegetable materials, n.e.s.	193	206	223	256	271	283
3 Mineral fuels, lubricants and related materials(b)	3 668	4 312	5 164	4 437	4 621	7 680
32 Coal, coke and briquettes	22	18	11	24	25	20
33 Petroleum, petroleum products and related materials(b)	3 608	4 234	5 055	4 338	4 526	7 543
34 Gas, natural and manufactured	38	59	97	75	70	117
4 Animal and vegetable oils, fats and waxes	232	268	266	258	296	277
41 Animal oils and fats	3	5	8	7	8	8
42 Fixed vegetable fats & oils, crude, refined or fractionated	208	241	235	229	261	232
43 Fats and oils (processed), waxes and inedible mixtures or preparations, of animal or vegetable origin, n.e.s.	20	23	23	22	27	36
5 Chemical and related products, n.e.s.(b)	8 009	8 901	9 028	10 276	11 435	12 498
51 Organic chemicals(b)	1 795	1 919	2 040	2 135	2 388	2 874
52 Inorganic chemicals(b)	639	832	700	678	752	682
53 Dyeing, tanning and colouring materials	372	385	408	453	483	518
54 Medicinal and pharmaceutical products	1 562	1 830	1 998	2 544	3 041	3 520
55 Essential oils and resinoids and perfume materials: toilet, polishing and cleansing preparations	568	609	636	750	850	915
56 Fertilisers (excluding crude)	535	669	703	768	785	717
57 Plastics in primary forms(b)	923	925	855	1 005	992	1 093
58 Plastics in non-primary forms	719	757	721	808	895	937
59 Chemical materials and products, n.e.s.	896	975	968	1 134	1 249	1 241

HISTORICAL IMPORTS, By Commodity(a) *continued*

	1988– 1989	1989– 1990	1990– 1991	1991– 1992	1992– 1993	1993– 1994
Section and Division of the SITC Rev3	\$m	\$m	\$m	\$m	\$m	\$m
6 Manufactured goods classified chiefly by material(b)	7 954	8 219	7 396	7 884	8 779	9 445
61 Leather, leather manufactures, and dressed furskins, n.e.s.	151	137	121	127	134	146
62 Rubber manufactures, n.e.s.(b)	682	750	661	748	812	954
63 Cork and wood manufactures (excluding furniture)	233	227	214	238	259	288
64 Paper, paperboard, and articles of paper pulp, of paper or of paperboard(b)	1 296	1 297	1 155	1 334	1 419	1 518
65 Textile yarn, fabrics, made-up articles, n.e.s., and related products(b)	1 999	1 955	1 818	2 021	2 144	2 246
66 Non-metallic mineral manufactures, n.e.s.(b)	965	1 069	958	928	1 033	1 080
67 Iron and steel	1 078	1 039	883	825	945	1 041
68 Non-ferrous metals(b)	357	396	385	380	465	498
69 Manufactures of metals, n.e.s.(b)	1 192	1 349	1 201	1 283	1 569	1 674
7 Machinery and transport equipment(b)	20 623	23 452	21 687	21 995	25 911	28 911
71 Power generating machinery and equipment	1 126	1 384	1 259	1 292	1 605	1 690
72 Machinery specialised for particular industries(b)	2 359	2 756	2 148	1 903	2 646	3 061
73 Metal working machinery	376	392	317	320	288	378
74 General industrial machinery and equipment, n.e.s. and machine parts, n.e.s.(b)	2 518	2 977	2 716	2 718	3 110	3 638
75 Office machines and automatic data processing machines	3 327	3 557	3 375	3 637	4 239	4 828
76 Telecommunications and sound recording and reproducing apparatus and equipment	1 717	1 805	1 737	1 981	2 347	2 538
77 Electrical machinery, apparatus, appliances, parts (including non-electrical counterparts of electrical domestic equipment)	2 358	2 718	2 521	2 836	3 362	4 051
78 Road vehicles (including air-cushion vehicles)	4 807	5 062	4 459	4 808	6 161	7 108
79 Transport equipment (excluding road vehicles)	2 035	2 801	3 156	2 499	2 154	1 620
8 Miscellaneous manufactured articles(b)	6 429	6 880	6 955	7 768	8 918	9 798
81 Prefabricated buildings; sanitary, plumbing, heating and lighting fixtures and fittings, n.e.s.	125	145	139	155	177	191
82 Furniture, parts thereof; bedding, mattresses, mattress supports, cushions and similar stuffed furnishings	285	338	291	320	350	396
83 Travel goods, handbags and similar containers	190	210	215	241	270	286
84 Articles of apparel and clothing accessories	759	908	956	1 100	1 330	1 480
85 Footwear	338	339	384	411	512	512
87 Professional, scientific and controlling instruments and apparatus, n.e.s.	1 065	1 144	1 199	1 282	1 569	1 707
88 Photographic apparatus, equipment and supplies and optical goods, n.e.s.; watches and clocks(b)	782	783	778	839	977	1 066
89 Miscellaneous manufactured articles, n.e.s.(b)	2 883	3 015	2 994	3 419	3 733	4 160
9 Commodities and transactions n.e.c. in the SITC(c)	1 112	1 050	966	1 150	1 122	1 086
93 Special transactions and commodities not classified according to kind	752	599	214	28	30	31
95 Gold coin whether or not legal tender, and other coin being legal tender	20	35	20	9	2	1
96 Coin (excluding gold coin), not being legal tender	—	8	2	—	—	—
97 Gold, non-monetary (excluding gold ores and concentrates)	151	285	623	1 040	1 021	981
98 Combined confidential items of trade and commodities n.e.s.(c)	188	123	108	74	69	72
Total trade	47 040	51 333	48 912	50 984	59 575	64 470

HISTORICAL IMPORTS, By Commodity(a) *continued*

Section and Division of the SITC Rev3	1994–	1995–	1996–	1997–	1998–	1999–
	1995	1996	1997	1998	1999	2000
	\$m	\$m	\$m	\$m	\$m	\$m
6 Manufactured goods classified chiefly by material(b)	10 908	11 039	10 724	12 531	12 855	13 692
61 Leather, leather manufactures, and dressed furskins, n.e.s.	167	164	162	145	148	160
62 Rubber manufactures, n.e.s.(b)	1 045	1 125	1 115	1 252	1 272	1 256
63 Cork and wood manufactures (excluding furniture)	329	317	333	408	456	567
64 Paper, paperboard, and articles of paper pulp, of paper or of paperboard(b)	1 859	1 942	1 769	1 990	2 082	2 330
65 Textile yarn, fabrics, made-up articles, n.e.s., and related products	2 454	2 359	2 284	2 521	2 588	2 633
66 Non-metallic mineral manufactures, n.e.s.	1 213	1 188	1 244	1 462	1 579	1 915
67 Iron and steel(b)	1 287	1 410	1 295	1 621	1 472	1 505
68 Non-ferrous metals(b)	679	645	619	802	850	804
69 Manufactures of metals, n.e.s.(b)	1 876	1 890	1 902	2 330	2 408	2 523
7 Machinery and transport equipment(b)	35 160	36 458	36 782	41 908	45 418	51 349
71 Power generating machinery and equipment	1 769	1 998	1 895	2 040	2 264	2 659
72 Machinery specialised for particular industries	3 792	3 924	4 043	4 244	4 234	4 155
73 Metal working machinery	573	492	608	581	497	445
74 General industrial machinery and equipment, n.e.s. and machine parts, n.e.s.	4 299	4 470	4 649	5 439	5 770	5 399
75 Office machines and automatic data processing machines	5 728	6 033	5 984	6 961	7 104	7 590
76 Telecommunications and sound recording and reproducing apparatus and equipment	3 362	3 759	3 669	3 980	4 926	6 808
77 Electrical machinery, apparatus, appliances, parts (including non-electrical counterparts of electrical domestic equipment)(b)	4 909	5 316	4 912	5 426	5 870	6 234
78 Road vehicles (including air-cushion vehicles)	8 678	7 980	8 579	11 300	11 904	12 784
79 Transport equipment (excluding road vehicles)	2 050	2 487	2 443	1 936	2 848	5 276
8 Miscellaneous manufactured articles(b)	10 708	11 035	11 349	13 458	14 463	15 512
81 Prefabricated buildings; sanitary, plumbing, heating and lighting fixtures and fittings, n.e.s.(b)	218	221	234	287	310	380
82 Furniture, parts thereof; bedding, mattresses, mattress supports, cushions and similar stuffed furnishings	444	464	532	678	797	1 003
83 Travel goods, handbags and similar containers	338	362	339	357	366	410
84 Articles of apparel and clothing accessories	1 637	1 766	1 841	2 278	2 459	2 795
85 Footwear	570	574	623	708	780	848
87 Professional, scientific and controlling instruments and apparatus, n.e.s.	1 834	1 911	1 944	2 295	2 533	2 593
88 Photographic apparatus, equipment and supplies and optical goods, n.e.s.; watches and clocks(b)	1 206	1 258	1 252	1 378	1 418	1 519
89 Miscellaneous manufactured articles, n.e.s.	4 462	4 479	4 585	5 478	5 801	5 964
9 Commodities and transactions n.e.c. in the SITC(c)	797	804	712	2 177	2 531	2 566
93 Special transactions and commodities not classified according to kind	25	28	32	42	39	42
95 Gold coin whether or not legal tender, and other coin being legal tender	2	5	9	9	6	8
96 Coin (excluding gold coin), not being legal tender	—	—	1	—	—	7
97 Gold, non-monetary (excluding gold ores and concentrates)	710	708	590	2 006	2 351	2 397
98 Combined confidential items of trade and commodities n.e.s.(c)	59	62	80	120	134	112
Total trade	74 619	77 792	78 998	90 684	97 611	110 083

(a) Due to changes in Customs valuation, data from 1989–1990 are not fully comparable with data for previous periods.

(b) Excludes commodities subject to a confidentiality restriction. These are included in Division 98. See paragraph 28 of the Explanatory Notes for details.

(c) Includes commodities subject to a confidentiality restriction. See paragraph 28 of the Explanatory Notes for details.

HISTORICAL EXPORTS, By Country(a)

	1988– 1989	1989– 1990	1990– 1991	1991– 1992	1992– 1993	1993– 1994	1994– 1995	1995– 1996	1996– 1997	1997– 1998	1998– 1999	1999– 2000
Country or country group	\$m	\$m	\$m	\$m	\$m	\$m	\$m	\$m	\$m	\$m	\$m	\$m
Association of South East Asian Nations (ASEAN)												
Brunei Darussalam	11	14	15	19	53	61	55	77	59	52	49	40
Indonesia	762	1 030	1 462	1 627	1 715	1 906	2 113	2 716	3 305	2 751	2 199	2 401
Laos	1	2	1	5	28	25	35	15	8	2	4	2
Malaysia	743	925	985	1 103	1 311	1 759	2 033	2 289	2 332	2 097	1 859	2 138
Myanmar	—	9	29	15	7	4	11	13	15	26	13	17
Philippines	422	470	437	513	598	699	839	1 075	1 226	1 163	1 207	1 304
Singapore	1 446	1 985	2 769	3 189	3 787	3 197	3 643	3 556	3 410	3 697	3 417	4 860
Thailand	468	591	665	816	1 205	1 278	1 560	1 779	1 693	1 390	1 306	1 703
Viet Nam	22	84	25	50	76	111	150	198	211	325	349	385
European Union (EU)												
Austria	11	22	26	24	27	28	32	36	21	32	44	51
Belgium-Luxembourg	386	482	448	594	618	458	466	668	923	1 154	1 085	1 090
Denmark	67	79	89	95	67	63	100	117	100	205	77	140
Finland	100	84	80	114	116	117	247	335	303	295	191	371
France	981	870	774	939	850	792	794	727	799	856	914	871
Germany	1 132	1 249	1 056	1 092	991	1 006	1 083	1 152	1 058	1 243	1 409	1 246
Greece	63	48	30	46	41	25	20	34	39	61	55	102
Ireland	7	16	16	19	22	28	42	50	53	66	174	134
Italy	1 012	1 038	923	979	872	1 052	1 250	1 282	1 354	1 752	1 564	1 574
Netherlands	681	1 042	1 016	856	876	703	707	695	584	829	866	1 379
Portugal	52	48	32	28	41	26	50	48	32	31	54	41
Spain	207	221	196	286	289	268	277	292	328	514	562	714
Sweden	137	148	127	145	136	139	155	200	220	157	160	169
United Kingdom	1 548	1 736	1 796	1 930	2 394	2 901	2 275	2 829	2 357	3 040	4 473	4 156
Other countries												
Brazil	115	128	138	225	289	319	307	389	333	408	447	470
Canada	710	760	802	845	1 158	1 149	1 150	1 267	1 178	1 276	1 274	1 176
China	1 257	1 171	1 348	1 458	2 268	2 590	2 964	3 781	3 584	3 872	3 948	4 959
Fiji	153	203	240	246	327	325	378	479	524	526	556	592
Hong Kong (SAR of China)	1 856	1 342	1 560	2 106	2 597	2 797	2 632	3 052	3 105	4 138	3 071	3 208
India	551	588	667	754	889	865	979	1 185	1 493	1 852	1 837	1 595
Iran	334	546	477	261	371	535	237	541	925	274	450	410
Japan	11 978	12 781	14 378	14 574	15 206	15 924	16 282	16 429	15 377	17 580	16 566	18 800
Korea, Republic of	2 211	2 700	3 237	3 365	3 970	4 706	5 250	6 615	7 134	6 397	6 320	7 615
New Zealand	2 258	2 616	2 545	2 830	3 365	4 009	4 791	5 609	6 214	5 662	5 838	6 731
Papua New Guinea	789	815	779	883	855	954	933	1 048	1 272	1 152	1 014	926
Saudi Arabia	253	287	218	266	329	344	277	452	448	545	1 060	1 333
South Africa	156	112	178	226	334	350	566	776	1 014	1 093	944	1 039
Switzerland	359	712	1 256	655	302	270	286	519	237	1 097	443	319
Taiwan	1 593	1 821	1 962	2 519	2 680	2 757	3 102	3 452	3 620	4 180	4 203	4 687
Turkey	79	88	169	171	264	206	228	366	384	636	349	230
United Arab Emirates	266	274	278	329	408	417	338	542	665	1 006	835	874
United States of America	4 498	5 426	5 778	5 220	4 940	5 075	4 643	4 619	5 526	7 794	7 984	9 577
Other countries	3 899	4 015	2 707	2 977	3 159	3 495	3 198	3 954	4 857	5 751	6 227	6 415
Country unknown	1	7	6	5	1	3	—	1	1	—	1	2
International waters	—	—	—	58	188	249	—	93	—	208	125	626
Ship & aircraft stores	429	486	679	568	617	566	574	656	612	579	467	734
Unidentified	2	6	—	—	62	—	—	—	—	—	—	45
Total trade	44 007	49 078	52 399	55 027	60 702	64 548	67 052	76 005	78 932	87 768	85 992	97 255

(a) See paragraph 16 of the Explanatory Notes.

HISTORICAL IMPORTS, By Country(a)

	1988– 1989	1989– 1990	1990– 1991	1991– 1992	1992– 1993	1993– 1994	1994– 1995	1995– 1996	1996– 1997	1997– 1998	1998– 1999	1999– 2000
Country or country group	\$m	\$m	\$m	\$m	\$m	\$m	\$m	\$m	\$m	\$m	\$m	\$m
Association of South East Asian Nations (ASEAN)	2 837	2 983	3 484	4 119	5 018	5 303	6 418	7 372	8 300	10 495	12 367	15 661
Brunei Darussalam	32	24	41	82	50	17	22	—	—	5	11	211
Indonesia	419	441	784	995	1 305	1 105	1 198	1 522	1 864	2 868	3 275	2 701
Laos	1	—	—	—	—	—	—	—	—	—	—	1
Malaysia	687	658	732	867	974	1 103	1 421	1 636	1 891	2 404	2 845	3 768
Myanmar	1	1	5	4	11	11	8	7	9	13	12	17
Philippines	165	150	129	143	177	188	259	260	282	418	405	457
Singapore	1 090	1 213	1 271	1 301	1 509	1 792	2 246	2 613	2 620	2 643	2 944	4 358
Thailand	420	479	505	647	756	794	970	1 005	1 201	1 480	1 902	2 422
Viet Nam	21	17	18	79	237	291	295	329	433	664	972	1 726
European Union (EU)	12 156	12 732	11 951	11 685	13 258	14 582	18 218	19 388	19 666	21 824	23 327	24 366
Austria	178	189	203	210	226	223	279	313	423	458	474	484
Belgium-Luxembourg	403	433	380	387	512	541	686	755	760	739	662	737
Denmark	202	251	207	230	274	300	340	336	383	399	459	542
Finland	352	311	303	322	415	463	635	684	606	686	601	668
France	1 267	1 166	1 233	1 336	1 481	1 542	1 754	1 867	1 980	2 029	2 202	2 245
Germany	2 970	3 443	3 115	3 007	3 383	3 759	4 861	4 862	4 558	5 207	6 082	5 792
Greece	77	68	45	49	51	52	63	78	95	91	101	97
Ireland	171	186	199	193	255	296	432	448	498	830	1 000	937
Italy	1 374	1 635	1 390	1 229	1 349	1 617	2 026	2 231	2 304	2 614	2 916	3 044
Netherlands	601	520	550	588	624	664	712	702	817	847	917	990
Portugal	58	61	52	59	63	66	81	94	106	121	141	168
Spain	208	219	204	179	218	288	484	519	458	652	653	660
Sweden	841	896	767	793	1 013	1 072	1 426	1 617	1 497	1 557	1 575	1 646
United Kingdom	3 454	3 356	3 302	3 102	3 395	3 698	4 439	4 882	5 182	5 593	5 545	6 356
Other countries												
Brazil	430	352	316	316	329	348	452	447	351	363	342	441
Canada	1 067	1 228	902	849	984	1 055	1 278	1 557	1 265	1 436	1 547	1 856
China	1 026	1 241	1 503	1 976	2 557	3 120	3 649	4 010	4 203	5 303	6 106	7 520
Fiji	99	93	90	101	130	163	185	235	264	307	349	356
Hong Kong (SAR of China)	888	847	741	792	796	801	923	970	900	1 031	1 228	1 280
India	247	278	260	288	362	427	532	549	577	687	666	715
Iran	10	11	10	14	14	16	21	22	26	25	27	29
Japan	9 757	9 872	8 849	9 290	11 139	11 700	12 777	10 816	10 241	12 660	13 587	14 138
Korea, Republic of	1 262	1 254	1 254	1 213	1 696	1 882	2 028	2 293	2 550	3 767	3 894	4 311
New Zealand	1 970	2 173	2 150	2 399	2 785	3 201	3 554	3 591	3 685	3 723	3 950	4 373
Papua New Guinea	105	235	584	953	1 254	1 296	1 125	1 220	1 091	768	781	1 380
Saudi Arabia	458	676	843	643	812	593	750	874	858	648	532	1 001
South Africa	98	119	99	114	192	268	302	433	424	582	537	749
Switzerland	497	567	664	580	721	818	991	966	895	950	1 092	1 283
Taiwan	1 920	1 946	1 752	1 979	2 213	2 362	2 570	2 585	2 522	2 809	2 978	3 244
Turkey	32	55	32	46	39	45	58	73	74	112	114	134
United Arab Emirates	396	452	419	469	698	617	627	475	800	492	201	401
United States of America	10 129	12 373	11 475	11 743	13 004	14 017	16 044	17 545	17 642	19 834	20 893	23 003
Other countries	1 638	1 825	1 512	1 382	1 534	1 815	2 082	2 326	2 617	2 809	3 032	3 624
Country unknown	19	21	21	35	40	32	31	46	47	57	61	219
International waters	—	—	—	—	1	8	4	—	—	—	—	—
Unidentified	—	—	—	1	—	—	—	—	—	—	—	—
Total trade	47 040	51 333	48 912	50 984	59 575	64 470	74 619	77 792	78 998	90 684	97 611	110 083

(a) Due to changes in Customs valuation, data from 1989–1990 are not fully comparable with data for previous periods.

EXPLANATORY NOTES

INTRODUCTION

1 This publication contains quarterly statistics of Australia's merchandise trade with its major trading partners and selected country groups.

2 The merchandise export and import statistics in this publication are compiled in broad agreement with the United Nations' recommendations for the compilation of international trade statistics. The paragraphs below briefly describe the concepts and methods used in their compilation.

RELATIONSHIP TO BALANCE OF PAYMENTS STATISTICS

3 The basic source of balance of payments data on goods exports and imports is 'international merchandise trade statistics'. However, because of conceptual differences, various coverage, timing and (imports only) valuation adjustments are necessary before international trade statistics can be put on a balance of payments basis. For more information on the relationship between international merchandise trade statistics and balance of payments statistics on merchandise trade see Chapter 6 of *Balance of Payments and International Investment Position, Australia: Concepts, Sources and Methods* (Cat. no. 5331.0).

SOURCE OF DATA

4 International merchandise trade statistics are compiled by the Australian Bureau of Statistics from information submitted by exporters and importers or their agents to the Australian Customs Service (Customs).

SCOPE

5 Merchandise trade covers all movable goods which add to (imports) or subtract from (exports) the stock of material resources in Australia.

Excluded are:

- direct transit trade, i.e. goods being trans-shipped or moved through Australia for purposes of transport only;
- ships and aircraft moving through Australia while engaged in the transport of passengers or goods between Australia and other countries; and
- non-merchandise goods, consisting primarily of goods moving on a temporary basis (e.g. mobile equipment; goods under repair; goods for exhibition; and passengers' effects).

COVERAGE

6 The United Nations' recommendations for the compilation of merchandise trade statistics recognise that the basic source used by most compiling countries—the customs record—will not be able to capture certain transactions. In Australia the following types of goods which fall within the scope of merchandise trade, are excluded because customs entries are not required:

- migrants' and passengers' effects exported or imported; and
- parcel post exports for values not exceeding \$2 000 and parcel post imports for values not exceeding \$1 000.

For exports only:

- fish and other sea products landed abroad directly from the high seas by Australian ships; and
- individual transaction lines (within an export consignment) where the value of the goods is less than \$500.

For imports only:

- bunkers, aviation fuel and stores supplied abroad to Australian ships and aircraft; and
- From July 1998 individual transaction lines (within a formally entered import consignment) where the value of goods is less than \$250 are not processed by ABS and are excluded from import statistics.

EXPLANATORY NOTES

COVERAGE <i>continued</i>	<p>In addition, although merchandise trade statistics should include illegal transactions, such as smuggled goods, these transactions are omitted as there is no practical way to collect this information.</p>
BASIS OF COMPILATION	<p>7 The merchandise trade statistics in this publication are recorded on a general trade basis, i.e. exports include both Australian produce and re-exports, and imports comprise goods entered directly for home consumption together with goods imported into bonded warehouses.</p> <p>8 Australian produce is defined as goods, materials or articles which have been produced or manufactured in Australia. Processing and assembly operations that leave imported components and products essentially unchanged are not considered as production or manufacture.</p> <p>9 Re-exports are defined as goods, materials or articles originally imported into Australia which are exported in the same condition or after undergoing minor operations (e.g. blending, packaging, bottling, cleaning, husking and shelling) which leave them essentially unchanged. Information on re-exports is shown in Table 25.</p>
STATISTICAL PERIOD	<p>10 Exports are recorded in the calendar month in which the goods departed from Australia.</p> <p>11 Imports are generally recorded statistically in the calendar month in which the import entries are finalised by the Customs. Import entries may be lodged early and finalised prior to arrival, or their finalisation may be delayed because of the various validation checks carried out by Customs. Currently, approximately 85% of total import trade by value shown for a particular month reflects shipments which arrived in that month, while approximately 10% reflects shipments which arrived during the previous month with the remaining 5% by value arriving in earlier or later months. For individual commodities these percentages may vary considerably.</p> <p>12 Occasionally significant delays occur in the lodgement, rather than processing, of import entries. In rare circumstances, and only when the affected entries are for significant values, they are recorded statistically in the month that they should have been lodged and finalised.</p>
VALUATION	<p>13 The value of exports is the free on board (f.o.b.) transactions value of the goods expressed in Australian dollars. Goods shipped on consignment are initially valued at the f.o.b. Australian port of shipment equivalent of the current price offering for similar goods of Australian origin in the principal markets of the country to which the goods are despatched for sale. Exporters who do not know the value of the goods at shipment, and enter an approximate value, must subsequently submit an entry either confirming or revising the estimated return.</p> <p>14 The value of imports is the Australian Customs Value. Goods are valued at the point of containerisation (in most cases) or the port of shipment, or at the customs frontier of the exporting country, whichever comes first.</p>

EXPLANATORY NOTES

COUNTRY

15 For the purposes of international merchandise trade statistics, a country is defined as a geographical entity which trades, or has the potential to trade, with Australia in accordance with Customs provisions.

16 For exports, 'country' refers to the country to which the goods were consigned at the time of export. Where the country of consignment is not known at the time of export, and where it is impossible to determine the destination, goods are recorded as 'Destination Unknown'. Tables 7 and 33 which show exports by country also include the item "Ship and aircraft stores". "Ship and aircraft stores" comprise fuel, food and other goods loaded onto foreign owned vessels and aircraft to be consumed during international journeys.

17 For imports, 'country' refers to the country of origin of the goods, which is defined as the country of production for Customs purposes. Where the country of origin is not known at the time of import and where it is impossible to determine the origin, goods are recorded as 'Origin Unknown'. Goods reported with country of origin 'Australia' (i.e. goods of Australian origin exported and subsequently re-imported) are shown as country 'Australia (Re-imports)' and are included in the Asia Pacific Economic Co-operation country group.

18 Wherever possible, statistics for countries and country groups for all time periods included in this publication reflect the composition of those countries and country groups on the last day of the reference period of this publication. Thus, after the German Democratic Republic and the German Federal Republic were reunited, statistics for all periods both before and after re-unification refer to the combined entity (called Germany in country classified statistics).

19 However, in the case of a country that breaks into a number of component entities, it is not possible to provide data for earlier periods for the new entities. For example, from October 1991, Estonia, Latvia and Lithuania are each separately identified in the statistics, but for earlier periods trade data for these three republics are included indistinguishably in data for the USSR.

20 The country groups shown in this publication are selected economic groups with which Australia trades, namely:

- Asia Pacific Economic Co-operation (APEC);
- Association of South-East Asian Nations (ASEAN);
- Developing Countries (DCs);
- European Union (EU).

21 A list of the countries included in each of the above groups is shown in the Appendix. Country groups may not be mutually exclusive e.g. Indonesia is included in APEC, ASEAN and as a Developing Country. The countries that belong to more than one group are identified with a footnote in the Appendix.

22 More details on the composition of countries identified in these statistics are available from the *Classification Manager* on Canberra (02) 6252 5409.

COMMODITY CLASSIFICATION

23 Commodity export and import statistics in Tables 9 to 24 of this publication are presented according to the codes and descriptions of the third revision of the United Nations' *Standard International Trade Classification* (SITC Rev3) which came into effect in January 1988. The ABS has added dummy codes to take account of Australia's treatment of gold coin, whether or not legal tender, and other legal tender coin and confidential items.

EXPLANATORY NOTES

STATE	<p>24 State information for exports presented in Table 25 refers to the State in which the final stage of production or manufacture occurs.</p> <p>25 State information for imports presented in Table 26 refers to the State where imported goods were released from Customs control, also called the State of final destination. The State of final destination is not necessarily the State in which the port of discharge of the goods is located. Goods can be forwarded interstate after discharge either under Customs control or not, but are recorded as being imported into the State where they are released by Customs.</p>
INDUSTRY OF ORIGIN	<p>26 Export and import statistics classified by subdivisions of the Australian and New Zealand Standard Industrial Classification (ANZSIC) are shown in Tables 27 and 28. The statistics are compiled by allocating statistical items of the Australian Harmonized Export Commodity Classification (AHECC) and the Harmonized Customs Tariff to the ANZSIC industry of origin based upon the primary activities of those industries with which the commodities are primarily associated. A full description of ANZSIC classes is contained in the publication <i>Australian and New Zealand Standard Industrial Classification, 1993 Edition</i> (Cat. no. 1292.0).</p>
BROAD ECONOMIC CATEGORIES	<p>27 Merchandise trade in Tables 29 and 30 are classified according to the categories of the United Nations' <i>Classification By Broad Economic Categories</i> (BEC). The BEC classifies international merchandise trade statistics for the purposes of general economic analysis according to the main end use of the commodities traded. The statistics are compiled by allocating the statistical items of the AHECC and the Harmonized Customs Tariff to the appropriate BEC.</p>
CONFIDENTIALITY	<p>28 Restrictions are placed on the release of statistics for certain commodities for reasons of confidentiality. These restrictions do not affect total export and import figures, but they can affect statistics at all levels in country and commodity tables. For information on the confidentiality restrictions and their impact upon the statistics in this publication, analysts should refer to the feature article on <i>Data Confidentiality</i> in the December 1999 issue.</p> <p>29 More information on the treatment of confidential data in international merchandise trade statistics can be obtained from the Information Paper, <i>International Merchandise Trade Statistics, Australia: Data Confidentiality</i> (Cat. no. 5487.0), or the Confidentiality Manager on (02) 6252 5409. Copies of the current Confidential Commodities List (CCL), in electronic or paper format, can be obtained from the Confidentiality Manager. The latest version is available on the ABS Website (www.abs.gov.au).</p>
RELIABILITY	<p>30 Statistics for recent periods should be considered preliminary. Revisions to previously published data frequently occur due to continuing data quality checks.</p>

EXPLANATORY NOTES

RELATED PUBLICATIONS

31 Other ABS publications which may be of interest include:

- *International Merchandise Imports, Australia* (Cat. no. 5439.0)—issued monthly
- *International Trade in Goods and Services, Australia* (Cat. no. 5368.0)—issued monthly
- *Balance of Payments and International Investment Position, Australia* (Cat. no. 5302.0)—issued quarterly
- *Balance of Payments and International Investment Position, Australia: Concepts, Sources and Methods* (Cat. no. 5331.0)—irregular issue
- *Export Price Index, Australia* (Cat. no. 6405.0)—issued quarterly
- *Import Price Index, Australia* (Cat. no. 6414.0)—issued quarterly

32 In addition, current statistics on international merchandise trade are contained in the *Year Book Australia* (Cat. no. 1301.0), the *Pocket Year Book Australia* (Cat. no. 1302.0) and the *Australian Economic Indicators* (Cat. no. 1350.0).

33 Current publications produced by the ABS are listed in the *Catalogue of Publications and Products, Australia* (Cat. no. 1101.0). The ABS also issues, on Tuesdays and Fridays, a *Release Advice* (Cat. no. 1105.0) which lists publications to be released in the next few days. The Catalogue and the Release Advice are available from any ABS office.

RELATED INTERNATIONAL TRADE PRODUCTS

34 A wide range of standard and customised international trade data is available on computer printout, floppy disk, magnetic tape or via electronic mail. These services are available on either a subscription or ad hoc basis. More information may be obtained by telephoning (02) 6252 5400.

ROUNDING

35 Where figures have been rounded, discrepancies may occur between sums of the component items and totals.

SYMBOLS AND OTHER USAGES

36 The following symbols and abbreviations are used in this publication:

- nil or rounded to zero
- n.e.c. not elsewhere classified
- n.e.s. not elsewhere specified
- .. not applicable

A P P E N D I X

MAJOR COUNTRY GROUPS

Asia Pacific Economic Co-operation (APEC)

Australia
Brunei Darussalam(a)
Canada
Chile(a)
China(a)
Hong Kong (SAR of China)(a)
Indonesia(a)(b)
Japan
Korea, Republic of(a)
Malaysia(a)
Mexico(a)
New Zealand
Papua New Guinea
Peru(a)
Philippines(a)
Russian Federation
Singapore(a)
Taiwan(a)
Thailand(a)
United States of America
Viet Nam(a)

Association of South-East Asian Nations (ASEAN)

Brunei Darussalam(a)
Indonesia(a)(b)
Laos(a)
Malaysia(a)
Myanmar(a)
Philippines(a)
Singapore(a)
Thailand(a)
Viet Nam(a)

Developing Countries (DCs)(c)

Afghanistan
Albania
Algeria
American Samoa
Angola
Anguilla
Antigua and Barbuda
Argentina
Bahamas
Bahrain
Bangladesh
Barbados
Belize
Benin
Bermuda
Bhutan
Bolivia
Bosnia and Herzegovina
Botswana
Brazil
British Indian Ocean Territory
British Virgin Islands
Brunei Darussalam(a)
Bulgaria
Burkina Faso
Burundi
Cambodia
Cameroon
Cape Verde
Cayman Islands
Central African Republic
Chad
Chile(a)
China(a)
Colombia
Comoros, Republic of

Developing Countries (DCs)(c) *continued*

Congo
Cook Islands
Costa Rica
Cote d'Ivoire
Croatia
Cuba
Cyprus
Czech Republic
Democratic Republic of Congo, Zaire
Djibouti
Dominica
Dominican Republic
Ecuador(a)
Egypt
El Salvador
Equatorial Guinea
Eritrea
Ethiopia
Falkland Islands (Malvinas)
Fiji
French Polynesia
Gabon
Gambia
Ghana
Gibraltar
Grenada
Guam
Guatemala
Guinea
Guinea-Bissau
Guyana
Haiti
Honduras
Hong Kong (SAR of China)(a)
Hungary
India
Indonesia(a)(b)
Iran
Iraq
Israel
Jamaica
Johnston Islands
Jordan
Kenya
Kiribati
Korea, People's Democratic Republic of
Korea, Republic of(a)
Kuwait
Laos(a)
Lebanon
Lesotho
Liberia
Libya
Macau (SAR of China)
Former Yugoslav Republic of Macedonia
Madagascar
Malawi
Malaysia(a)
Maldives
Mali
Malta
Marianas, Northern
Marshall Islands
Mauritania
Mauritius
Mexico(a)
Micronesia, Fed States of
Midway Islands
Mongolia
Montserrat
Morocco
Mozambique

A P P E N D I X

MAJOR COUNTRY GROUPS

Developing countries (DCs)(c) *continued*

Myanmar(a)
Nauru
Namibia
Nepal
Netherlands Antilles
New Caledonia
Nicaragua
Niger
Nigeria
Niue
Oman
Pakistan
Palau
Panama
Paraguay
Peru(a)
Philippines(a)
Pitcairn Island
Poland
Qatar
Romania
Rwanda
St Christopher and Nevis
St Helena
St Lucia
St Pierre and Miquelon
St Vincent and the Grenadines
Samoa
Sao Tome and Principe
Saudi Arabia
Senegal
Seychelles
Sierra Leone
Singapore(a)
Slovak Republic
Slovenia
Solomon Islands
Somalia
Sri Lanka
Sudan
Suriname
Swaziland
Syria
Taiwan(a)
Tanzania
Thailand(a)
Togo
Tokelau
Tonga
Trinidad and Tobago
Tunisia
Turkey
Turks and Caicos Islands
Tuvalu
Uganda
United Arab Emirates
Uruguay
Vanuatu
Venezuela
Viet Nam(a)
Virgin Islands of the United States
Wake Island
Wallis and Futuna Islands
Yemen
Zambia
Zimbabwe

European Union (EU)

Austria
Belgium-Luxembourg(d)
Denmark
Finland
France
Germany
Greece
Ireland
Italy
Netherlands
Portugal
Spain
Sweden
United Kingdom

(a) Also included in other country groups.

(b) Indonesia totals include East Timor.

(c) Developing Countries as defined in Schedule 1 of the Harmonized Tariff (includes Forum Island Countries, Developing Countries and places treated as Developing Countries). Excludes Papua New Guinea.

(d) Combined total as unable to separate.

FEATURE ARTICLES IN RECENT ISSUES OF THIS PUBLICATION

Feature articles included in recent issues of this publication are available on the ABS Website (www.abs.gov.au). Copies may be obtained from the Publications Manager, International Trade – telephone 02 6252 7169. These will be charged for under the ABS pricing policy.

<i>Article</i>	<i>Issue</i>	<i>Page</i>
Australia's trade in crude petroleum	Mar qtr 2000	10-18
Data confidentiality	Dec qtr 1999	10-18
Australia's merchandise trade with the Republic of Korea	Sept qtr 1999	10-24
Revisions to standards for international trade statistics	Jun qtr 1999	10-11
Review of statistical codes	Jun qtr 1999	12-14
Measuring exports by region of origin	Mar qtr 1999	10-11
Australia's merchandise trade with Japan	Mar qtr 1999	12-27
Bilateral merchandise trade statistics reconciliation: Australia and the European Union, 1992 to 1997	Sept qtr 1998	10-21
Change to value threshold for imports	Jun qtr 1998	10-13
Australia's merchandise trade with ASEAN member countries	Jun qtr 1998	14-32
Export and import currencies	Mar qtr 1998	10-14
Bilateral merchandise trade statistics reconciliation: Australia and New Zealand, 1993 and 1994	Dec qtr 1997	10-17
Bilateral merchandise trade statistics reconciliation: Australia and Japan, 1994	Sept qtr 1997	11-15
Tracking Australia's International trade	Sept qtr 1997	5-10
ANZSIC and TREC—Two views of trade	Sept qtr 1996	5-11
Bilateral merchandise trade statistics reconciliation: Australia and United States of America, 1991 to 1994	Sept qtr 1996	12-19
Changes to the classification of merchandise trade statistics from 1 July 1996	Mar qtr 1996	5
Quality of Australia's international merchandise trade statistics	Sept qtr 1995	5-15
Australia's merchandise trade with APEC member economies	Mar qtr 1995	6-18
Australia's merchandise trade with Canada—a dual perspective	Dec qtr 1994	9-16
Statistical developments in APEC	Dec qtr 1994	6-8
ANZSIC—an international trade perspective	Sept qtr 1994	13-21
Bilateral merchandise trade statistics reconciliation: Australia and United States of America, 1992	Sept qtr 1994	6-12
Australia's merchandise trade with the United Kingdom—a dual perspective	Mar qtr 1994	5-11

FOR MORE INFORMATION...

- INTERNET* **www.abs.gov.au** the ABS web site is the best place to start for access to summary data from our latest publications, information about the ABS, advice about upcoming releases, our catalogue, and Australia Now—a statistical profile.
- LIBRARY* A range of ABS publications is available from public and tertiary libraries Australia-wide. Contact your nearest library to determine whether it has the ABS statistics you require, or visit our web site for a list of libraries.
- CPI INFOLINE* For current and historical Consumer Price Index data, call 1902 981 074 (call cost 77c per minute).
- DIAL-A-STATISTIC* For the latest figures for National Accounts, Balance of Payments, Labour Force, Average Weekly Earnings, Estimated Resident Population and the Consumer Price Index call 1900 986 400 (call cost 77c per minute).

INFORMATION SERVICE

Data which have been published and can be provided within five minutes are free of charge. Our information consultants can also help you to access the full range of ABS information—ABS user-pays services can be tailored to your needs, time frame and budget. Publications may be purchased. Specialists are on hand to help you with analytical or methodological advice.

- PHONE* **1300 135 070**
- EMAIL* **client.services@abs.gov.au**
- FAX* 1300 135 211
- POST* Client Services, ABS, GPO Box 796, Sydney 1041

WHY NOT SUBSCRIBE?

ABS subscription services provide regular, convenient and prompt deliveries of ABS publications and products as they are released. Email delivery of monthly and quarterly publications is available.

- PHONE* 1300 366 323
- EMAIL* subscriptions@abs.gov.au
- FAX* 03 9615 7848
- POST* Subscription Services, ABS, GPO Box 2796Y, Melbourne 3001



2542200006003
ISSN 1321-3512

RRP \$25.00

© Commonwealth of Australia 2000